

CAPEX 22

AUCTION SALE

The Fred Fawn Large Queen Collection

June 10th, 2022



Viewing available prior to the sale at booths 711 and 713

All lots are on
display at our office from
10.00 a.m. till 6.00 p.m.

r. maresch & son

CANADA'S PREMIER STAMP AUCTION HOUSE SINCE 1924

6-2 VATA COURT, AURORA, ON L4G 4B6 CANADA
(905) 726-2197

www.maresch.com

©2022





R. Maresch & Son is pleased to have been selected to be the auctioneer for the award-winning Fred Fawn Large Queen exhibit. Mr. Fawn, as I grew up calling him even though he was personable, had been visiting and buying from our retail store and our auction sales since the 1970s. He had collected and exhibited many different things over the years including Canada's Imperial Penny Postage 1898 and Marx & Engels First Time on Stamps in the world (1919), but specialized and exhibited the Large Queens (1868 to 1972) for many years, supported throughout by Eve, his wife of 58 years.

In addition to careful collecting, Fred Fawn engaged in extensive research, including on historical design, colour and production innovations, and tracking down the details surrounding intriguing accounts of the uses and travels of particular covers. Several of his exhibitions were reproduced for the National Archives.

Fred Fawn's collection had been exhibited all over the world, winning many awards, including F.I.P. GOLD at CHINA 1999,

AUSTRALIA PACIFIC EXPLORER 2005, ESPAGNA 2006, BELGICA 2006, PRAGA 2008, ITALIA 2009, BRASILIA 2017, ISRAEL 2018, CHINA 2019, as well as CHICAGOPEX WSP 2004, AMERISTAMP 2007, and Court of Honor ROYAL 2007.

The exhibit showed Essays, Die Proofs, Trial Colour Proofs, Plate Proofs, mint, used, varieties, covers with different rates, including mixed frankings, both Cents and Small Queens, Registered and Foreign destinations. It includes many unique, "only recorded", "largest know" items.

Going through the exhibit we recognized many items that were sold through us in past auctions from other great collectors such as Arfken, Brassler, Brigham, deVolpi, Firth, Gordon, Greene, Harrison, Leggett, Lindsey, Lum, Menich, Pratt, and Siverts.

We are honoured to once again be the Official auctioneer for CAPEX 22 continuing in a tradition my father started in 1978.

I would also like to thank the many people who assisted us in the preparation of this sale, Rick Sheryer who gracefully came out of retirement to help, Glenn Archer, Ted Nixon and the Vincent Graves Greene Foundation.

TERMS OF SALE

1. **ALL LOTS IN THIS AUCTION ARE OFFERED WITHOUT RESERVE.** All bids are per lot as described in this catalogue. The right is reserved to withdraw any lot prior to sale, to divide a lot, or to group two or more lots belonging to the same vendor. The auctioneer shall regulate the bidding on the floor. The auctioneer reserves the right to reject any bid. In the event of any dispute, their decision shall be final.
2. The highest bidder shall prevail at one advance over the next highest bidder. Tie bids shall go to the first received. A BUYER'S PREMIUM OF 18% WILL BE ADDED TO THE HAMMER (SELLING) PRICE AND BECOMES PART OF THE TOTAL PURCHASE PRICE.
3. Successful FLOOR BIDDERS must pick up their lots or arrange for delivery immediately after the sale. PAYMENT IS DUE AT THIS TIME. MAIL BIDDERS known to us may have their lots forwarded for payment within three days. Others will receive an invoice immediately after the sale and must make remittance before lots are sent. Overdue accounts will be billed a 3% service charge per month. Lots not picked up and paid for after 30 days may at our discretion, be re-offered in the next available auction. Ownership shall not pass to the buyer until full payment has been received.
4. Shipping and handling are charged to the account of the buyer. Shipments to Canada will be sent by Expedited parcel, to USA by Tracked Packet-USA or Xpresspost USA, all other destinations up to 500g will be sent by registered mail, larger parcels by Xpresspost International, Tracked Packet International (where available), or by Priority Worldwide, or comparable secured methods.
5. In our opinion, all lots are as described. If a prospective purchaser wishes to obtain another expert opinion - acceptable to us - on a lot (not including mixed lots or collections containing undescribed stamps), they must request an extension in writing before the auction (on the bid sheet is acceptable). Lots sold under this condition shall be held open for up to 120 days, after which the lot will not be returnable for any reason. Items that already have certificates are sold on the basis of those certificates (unless otherwise stated in the description). Buyers wanting to place a lot on extension for a different certificate must discuss that with us BEFORE the auction to obtain approval to bid on that basis. Expenses for certificates shall be borne by the purchaser. If a negative opinion is received within the 120 days, the purchase price will be refunded in full, and the expertising fee (to a maximum of \$50) will be paid by us. All lots sent on extension must be paid for under our normal terms. The inability of an expert committee to render an opinion on a lot is insufficient grounds for its return.
6. Claims for errors in description, including condition, must be made within 7 days after receipt, but no later than 45 days after the auction. Stamps returned must be in the state received and must be sent by a signature mail service or bonded courier. Lots that have been back stamped, marked or encapsulated by experts or expert committees are not returnable. It is the purchaser's responsibility not to let this happen. Stamps described as having defects are not returnable on account of their condition. No lots may be returned by bidders who have had an opportunity to examine, or an agent, view them on their behalf before the sale, nor any stamps which have been photographed for perforations, centering, margins or cancellations. All stamps photographed in colour are reproduced with extreme care as to accuracy of colour and shades, however stamps photographed in colour may not be returned because of shade differences or centering between the lot and photograph.
7. All lots are sold in CANADIAN FUNDS. Lots picked up in Ontario will be charged H.S.T., lots delivered in Canada will be charged the appropriate G.S.T. or H.S.T. For the convenience of our American clients, U.S. funds will be accepted at a rate of exchange to be determined by the auctioneer and announced at the opening of the sale. If you wish to pay in U.S. funds, please pay the amount stated on your invoice.
8. **QUALITY RATINGS:** Superb, extremely fine, very fine, fine to very fine, fine, very good, and good.
9. **CATALOGUE NUMBERS AND VALUES** used are from the most currently available edition of Scott's Standard Postage Stamp Catalogue and are quoted in US dollars. For B.N.A. material, numbers and values are from the current edition of the Unitrade Canada Specialized Catalogue and are in Canadian dollars, with appropriate premiums. When we catalogue a collection, we omit all obviously faulty, damaged, faked or forged stamps; our count of the stamps and catalogue value will be a conservative calculation. Owners sometimes catalogue every stamp or portion thereof, regardless of quality. We accept no responsibility for these valuations. Errors may occur nevertheless and (in spite of all our careful work) all collections are sold "as is".
10. **AGENTS BIDDING ON BEHALF OF OTHERS:** If you have complicated bids to be executed or wish an outside opinion as to the value and condition of a lot we shall be pleased to furnish a list of agents. If you instruct your agent to bid on the basis of our descriptions, we presume that they have inspected the lot and agree with our description in executing your bid. Agents must register their bidders and obtain approval before our sales start.
11. This sale is conducted by and for the account of R. Maresch & Son Auctions Limited.
12. **THE PLACING OF A BID SHALL CONSTITUTE ACCEPTANCE OF THESE TERMS OF SALE.**

ABBREVIATIONS AND SYMBOLS

| | | | | | |
|------|--|-------|--|------|--|
| O | used | L | literature | s/s | souvenir sheet |
| ☐ | cover, card | lh | lightly hinged | SG | Stanley Gibbons Catalogue |
| ★★ | original gum, never hinged | LL | lower left | SON | socked-on-the-nose cancel |
| ★ | mint with original gum | LR | lower right | TC | Trial Colour Die Proof |
| (★) | no gum or regummed | MC | Maltese Cross cancel | UCS | Unitrade Canada Specialized Catalogue |
| ACSC | Australian Commonwealth Specialists' Catalogue | Mi | Michel | UL | upper left |
| BOB | back of book | ms | manuscript | UR | upper right |
| cds | circular date stamp | NSSC | Newfoundland Specialized Stamp Catalogue | v.f. | very fine |
| CP | Campbell Paterson Specialized New Zealand | nh | never hinged | vlh | very lightly hinged |
| DP | Die Proof | og | original gum | Y&T | Yvert & Tellier Catalogue |
| E | Essay | P | proof | Zum | Zumstein Switzerland Specialized Catalogue |
| F | Forgery | PP | plate position | € | Euro |
| hh | heavily hinged | R&S | Reiche and Sendbuehler | £ | British Pound Sterling |
| hr | hinge remnant | SASSC | South African Stamp Colour Catalogue | ¥ | Japanese Yen |
| hs | hand stamp | S | Specimen | | |

Mail bids not conforming to these intervals will be reduced to conform.

| BIDS | INCREMENT | BIDS | INCREMENT | BIDS | INCREMENT |
|--------------|-----------|--------------|-----------|---------------|-----------|
| Up to \$100 | 5 | Up to \$2000 | 50 | Up to \$10000 | 500 |
| Up to \$300 | 10 | Up to \$3000 | 100 | Up to \$30000 | 1000 |
| Up to \$1000 | 25 | Up to \$5000 | 250 | Over 30000 | 2500 |

AUCTION CATALOGUES AND PRICES REALIZED. If you wish to continue to receive our catalogues and prices realized, please subscribe or you may be removed from our list.

☎ (905) 726-2197 www.maresch.com E-MAIL bids@maresch.com

CALL US TOLL FREE IN CANADA AND UNITED STATES at 1-800-363-0777

THE FRED FAWN LARGE QUEEN (1868-1872) COLLECTION

at CAPEX 22 in the WILLIAM (BILL) H. P. MARESCH CONFERENCE ROOM

FRIDAY, JUNE 10th, 2022 at 6:00 PM EST SHARP

Lots can be viewed at Booths 711 & 713 prior to the sale



- 1 ☒ **FREE** franked **REGISTERED** on ADJUTANT GENL OF MILITIA cover with OTTAWA 29 SP 69 C.W and **MILITIA DEPARTMENT A.G.O.** cancels and straight line REGISTERED and FREE to Wardsville Ont, with C.W.R. WEST 1 OC 69 transit, faint blue NEWBURY cds and boxed REGISTED C.W.R. on reverse, slightly reduced at left. Ex., Harrison. Est. 300+.....

COVERS TO CANADA

- 2 ☒ 21: **HALF CENT**: BLACK, tied to soiled and repaired cover with HALIFAX N.S. 19 AU 82 CANADA duplex to Moncton, appears fine. Est. 400+.....



2



3

- 3 ☒ 21,21iv,37: **HALF CENT**: BLACK, two pairs, three with **SPUR** variety, plus **THREE CENT** Small Queen tied to **MIXED FRANKING** Registered cover, NORTH SYDNEY 16 JU 76 C.B to Wallace Nova Scotia, with two line REGISTERED (L)ETTER No _____, partial blue (SYDN)EY 16 (JU) 76 (N).S., PORT HAWKESBURY 17 JU 76 N.S. CANADA and TRURO 19 JU 76 N.S. transits, WENTWORTH STATION 20 JU 76 N.S. receiver, cover reduced left and right and back repaired at left, appears fine. (Only Registered HALF CENT Large Queen cover reported). Est. 1750+.....



4



5

- 4 ☒ 21: **HALF CENT**: BLACK strip of six, tied by MONTREAL AM 31 AU 68 C.E. duplexes, to Sawyererville, LENNOXVILLE 31 AU 1868 transit and SAWYERVILLE 1 SP 68 C.E. receiver, cover fold not affecting stamps. Est. 250+
- 5 ☒ 21: **HALF CENT**: BLACK, three blocks of four, tied by segmented corks with ST. CASMIR 4 OC 75 QUE cds, to slightly reduced left and top, repaired and folded large cover to Quebec, with Too Late hand stamp, STE ANNE DE LA PERADE 5 OC 1875 transit and QUEBEC 6 OC 75 QUE receiver on reverse, appears fine. Est. 350+



6



7

- 6 ☒ 21: **HALF CENT**: BLACK pair, cancelled by fancy cork from AUBERT-GALLION 2 SP 79 QUE to large part of repaired large cover to St Joseph, (FR)ANCOIS 2 Sp 79 QUE transit and ST. JOSEPH DE BEAUCE 2 SP 79 QUE receiver on reverse, appears fine. Est. 180+
- 7 ☒ 21a: **HALF CENT**: BLACK, perf 11 1/2 x 12, tied to unaddressed PRINTED CIRCULAR (fragile and separating) dated Toronto, August 22nd, 1879., by cork cancel, page folded creasing stamp LR, otherwise fine. Ex Harrison. 1998 Greene Cert. 1200



8



9

- 8 ☒ 21vi: **HALF CENT**: GREY BLACK (small faults) pair, cancelled with Nova Scotia mute grid, PUGWASH 13 JU 1878 N.S. double split ring to unsealed PRINTED CIRCULAR to Little Glass Bay, THOMPSON (AVENUE) 13 JU 78 N.S. and blue SYDNEY 17 JU 78 N.S. transits, LITTLE GLASS-BAY 17 JU 78 N.S. receiver, fine. Est. 250+
- 9 ☒ 14,22(2): **ONE CENT**: BROWN RED (two perf faults due to hanging over edge), plus **ONE CENT 1859** on combination cover, green Wroxeter U.C. 1 JY 68 and straight line REGISTERED to Goderich, Seaforth 3 JY 68 and B & LHR/WEST RPO transits and large Goderich split circle on back, slightly reduced at left. Ex. Harrison. 2020 Greene Cert. Est. 3500+



10



11

- 10 ☒ 22: **ONE CENT**: BROWN RED, strip of three (faulty) tied to cover by HAMILTON 14 MY 68 C.W. cds cancels to Princeton Ont, blue-green 15 MY 1868 receiver, cover repaired at UL and reduced at right. Est. 300+.....
- 11 ☒ 22: **ONE CENT**: BROWN RED, to cover by target cancel with BEACHVILLE 26 AP 69 ONT cds to Tillsonburg Ont, same day blue receiver and INGERSOLL transit on reverse, light water staining on UR appears fine. Est. 100+.....



12

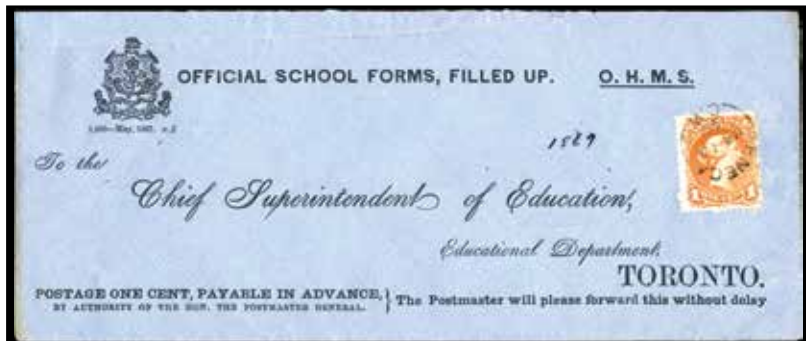


13

- 12 ☒ 22,24: **ONE CENT**: BROWN RED, plus **TWO CENT** GREEN on cover with BARRIE 20 AU 68 C.W. cds to Cookstown, colourful combination, slightly reduced at right, appears fine. Est. 250+.....
- 13 ☒ 22,24: **ONE CENT**: BROWN RED (small tear at bottom), plus **TWO CENT** GREEN on Registered (paid in cash) cover with pen cancels, with straight line REGISTERED, to Goderich, with EXETER 15 AU 1868 U.C. and CLINTON same date transits and GODERICH 17 AU 1868 receiver, slightly trimmed at right. Est. 400+.....



14

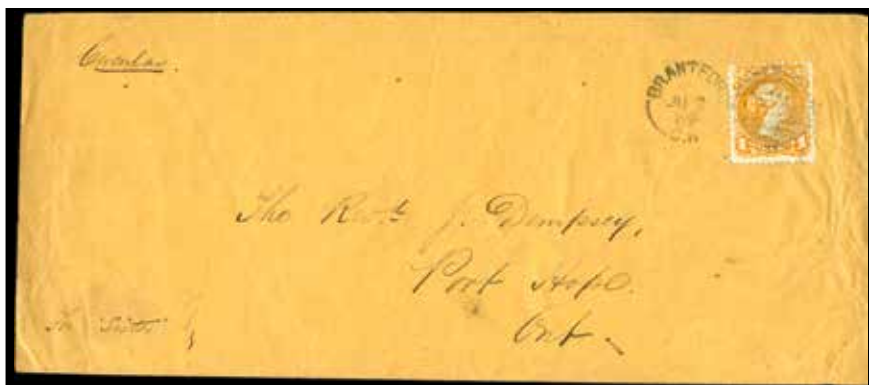


15

- 14 ☒ 22: **ONE CENT**: BROWN RED, exceptionally sharp print, tied to folded circular dated 18 May 1868, printed on A. PIRIE & SONS watermarked paper, fine. Est. 250+.....
- 15 ☒ 22: **ONE CENT**: BROWN RED (perf faults), tied to OFFICIAL SCHOOL FORMS, FILLED UP. O.H.M.S. **PRE-PRINTED** cover SENECA 13 MR 68 C.W to Toronto, HAMILTON 15 MR 1869 transit and same day TORONTO ONT receiver, trimmed at folded top. Postal instructions printed at bottom. Est. 500+.....



16



17

- 16 ☒ 23: **ONE CENT: YELLOW ORANGE** (faulty), tied to **MUSIC WAREHOUSE** advertising drop letter by **TORONTO 23 FE 70 ONT** double split ring to Trinity College, reduced at left and part of flap missing, appears fine. Est. 350+.....
- 17 ☒ 23: **ONE CENT: YELLOW ORANGE**, tied by **BRANTFORD 2 JU 69 C.W** duplex to unsealed slightly wrinkled cover, manuscript Circular UL, to Port Hope, no receiver. Est. 150+.....



18



19

- 18 ☒ 24.37b: **TWO CENT: GREEN** (torn), plus **THREE CENT PALE COPPER RED** Small Queen tied to **MIXED FRANKING** Registered **WINDSOR & ANNAPOLIS RAILWAY** cover by mute grids with **KENTVILLE 4 OC 70 NS** split ring, with two-line **REGISTERED LETTER** No _____ and oval **H 4 OC 1871 NS** transit to Acadia Mines Pictou, **ALBION MINES** (now Stellarton) **5 OC 1871** receiver on reverse, reduced at left, appears fine. Est. 350+.....
- 19 ☒ 24: **TWO CENT: GREEN** (faulty), tied to **Provincials Secretary's Office** Printed Circular dated Quebec 9th December 1869, paying **2¢ DOUBLE CIRCULAR RATE** to Montreal, appears very fine. Est. 300+.....



20



21

- 20 ☒ 24.39: **TWO CENT: GREEN**, plus **SIX CENT YELLOW BROWN** Small Queen tied to **DOUBLE RATE MIXED FRANKING** cover with Grid cancels, **TORONTO PM 8 MY 72 ONT** double split ring, red **REGISTERED LETTER** line to Saugeen, **SAUGEEN 1872 C U.C** receiver on reverse, trimmed left, right, and top, back flap missing, fine. Est. 500+.....
- 21 ☒ 24: **TWO CENT: GREEN**, three **PAIRS** pen cancelled, **DEVON 17** (manuscript) **SP C.W** to Goderich, straight line **REGISTERED** (paid in cash), **CLINTON 7 SP U.C** transit and **GODERICH 18 SEP UC** receiver, cover creased and reduced at right. **QUADRUPLE RATE. UNIQUE** franking. Est. 500+.....



22

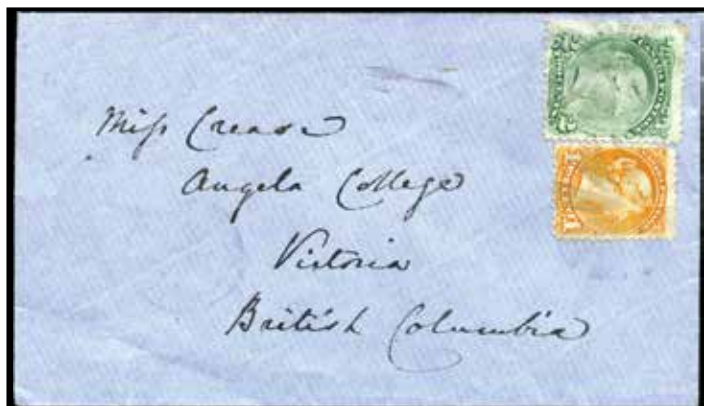


23

- 22 ☒ 24: **TWO CENT: GREEN** (vertical crease), tied to **LE CANADIEN**, newspaper 15 Aug 1870 ed by **2-RING-3**, paying the 2¢ TRANSIENT NEWSPAPER RATE, to Quebec City Seminary, newspaper a bit tattered at fold. (The only recorded example which is complete and intact). 2008 Greene Cert. Est 1000+.....
- 23 ☒ 24,37a: **TWO CENT: GREEN** (faulty), plus five **THREE CENT ROSE** (faulty and repaired) Small Queens, tied to **FIVE TIMES DOMESTIC RATE MIXED FRANKING** large folded cover, all cancelled with straight line REGISTERED, HAMILTON 9 MY 71 C.W to Sandwich, no receiver, trimmed at right. Est. 350+.....



24



25

- 24 ☒ 24,37a: **TWO CENT: GREEN**, plus two **THREE CENT ROSE** Small Queens tied to **MIXED FRANKING** large part of Registered front by segment cork fancy cancels, with straight line REGISTERED and Too Late, OTTAWA (AM) 9 NO 71 ONT to Montreal. Colourful. Est. 350+.....
- 25 ☒ 24i,35a: **TWO CENT: EMERALD GREEN** (UL corner added), plus **ONE CENT ORANGE** (Montreal) Small Queen (faulty) **MIXED FRANKING** on blue Bishop's cover to Victoria, dated 62 AP 72, colourful mixed franking. 2020 Greene Cert. Est. 250+.....



26



27

- 26 ☒ 24i,37a: **TWO CENT: EMERALD GREEN**, plus **THREE CENT ROSE** Small Queen tied to **MIXED FRANKING** Registered cover by **2-RING-54** with two-line red REGISTERED LETTER No _____ and TRURO 20 OC 1871 N.S. double split ring to Stellarton, SELLARTON 21 OC 71 N.S receiver on reverse, slight reduction and repair at left, appears fine. Est. 350+.....
- 27 ☒ 24i,37,39b: **TWO CENT: EMERALD GREEN**, plus **THREE CENT YELLOW ORANGE** and **SIX CENT BROWN** perf 11½x12 Small Queens tied to **MIXED FRANKING** Registered letter, 6¢ postage and 5¢ registry, with SUSSEX VALE 14 MY 1873 N.B barred ovals, two line straight line REGISTERED - No _____, to Alfred ME USA, E. & N.A.R./WEST 14 MY 73 and 16 MY 73 R.P.O. cancels, SUSSEX VALE 16 MY 1873 and REGISTERED SAINT JOHN N.B. 17 MY 1873 transits on reverse. Ex. V G Greene with backstamp, H Harrison. Est. 1000+.....



28



29



30

- 28 ☒ 24i,35iv: **TWO CENT**: EMERALD GREEN, plus **ONE CENT** RED ORANGE (Montreal) Small Queen **MIXED FRANKING**, on large piece of Promissory Note with manuscript "15 Septembre 1871 M.L", stamps creased at fold, supported. Interesting fiscal usage. Est. 500+
- 29 ☒ 24i,27a: **TWO CENT**: EMERALD GREEN, plus **SIX CENT** YELLOW BROWN (Plate 2) cancelled with fancy cork TORONTO PA 24 FE 71 ONT to large (folded at left, top and right) part and of Registered letter to Saugeen, with straight line REGISTERED, SAUGREEN 25 FE 1871 receiver on reverse. Ex. Harrison. Est. 450+
- 30 ☒ 24iii,25: **TWO CENT**: GREEN, on **SOFT WHITE PAPER**, plus **THREE CENT** RED (oxidized), tied to Registered cover by LONDON PM 14 NO 68 C.W duplexes to Toronto with straight line REGISTERED TORONTO 16 NO 69 C.W receiver on reverse. Est. 200+



31



33

- 31 ☒ 24viii: **TWO CENT**: GREEN, on **SOFT WHITE (BLOTTING) PAPER**, tied to cover with GRANVILLE-FERRY 10 FE 72 N.S. cds, unofficial acceptance of the 2¢ County Rate in 3¢ era, reduced at left, appears very fine. 2020 Greene Cert. Est. 250+
- 32 ☒ 25,25b: **THREE CENT**: RED, four covers, one on mourning cover TORONTO PM 17 SP 68 C.W to Barrie Ex. V G Greene, one folded "OPINION OF THE MEDICAL OFFICIER" from OTTAWA AM 1 DE 69 C.W to Montreal, TORONTO PM 3 OC 68 to other thin paper TORONTO PM 27 AU 68 C.W to Montreal (with 2020 Greene Cert), plus two stampless **UNPAID** rates with different handstamp 5's, PETERBORO 15 AU 68 C.W to Lindsay and STAYNER 26 FE 69 C.W to Barrie, f-vf. Est. 100+Photo Online
- 33 ☒ 25,24: **THREE CENT**: RED, plus **TWO CENT** GREEN paying registration on **MOURNING** cover PARRSBOROUGH N.S. 24 JY 1869 to Maccan N.S. manuscript "Registered No 1377". Couple foxing spots, still fine. Only reported Registered Large Queen mourning cover. Est. 600+



34



35

- 34 ☒ 25: **THREE CENT**: RED, plus two **TWO CENT** YELLOW ORANGE tied to Registered cover by **2-RING-3** with Quebec 30 JU 69 CE cds with straight line REGISTERED, DRUMMONVILLE 2 JY 1869 C.E. cds and large QUEBEC & RICHMOND G.T.R. WAY A 30 JUN 1869 No. 2 cancels on reverse, paying 3¢ domestic plus 2¢ registration, reduced at left. Est. 500+.....
- 35 ☒ 25: **THREE CENT**: RED (2), plus pair of **ONE CENT** BROWN RED on large part of Registered cover by FORT ERIE 1 SP 1868 cds cancels, with straight line REGISTERED, to Alfred Maine (USA), paying 3¢ domestic plus 5¢ registration, no receiver, reduced at right. Est. 350+.....



36



37

- 36 ☒ 25,22: **THREE CENT**: RED (faulty), plus pair of **ONE CENT** BROWN RED tied to Registered cover by HAIFAX 19 MR 69 NOVA SCOTIA split ring and pen cancels, with manuscript Registered, to New Glasgow, cover repaired at LR, appears fine. Ex. Harrison. Est. 350+.....
- 37 ☒ 25: **THREE CENT**: RED (torn at fold), tied by superb strike of eight 2-barb arrowheads (Lindsay Ont) (D&S 809) to large piece to Crown Lands Agent Saugeen Ont, with TORONTO 26 JA 70 cancel, appears very fine. Est. 75+.....



38



39

- 38 ☒ 25: **THREE CENT**: RED (faulty), on cover with very fine COBLE'S CORNERS 14 JY 68 ONT cds to Chateaugay CE cancelled **TOO LATE**, MONTREAL AM 16 JY 68 Q transit and light CHATEAUQUAY 68 cds with manuscript 17 on reverse, light overall toning and slightly reduced at left. Est. 200+.....
- 39 ☒ 25,37b: **THREE CENT**: RED, plus **THREE CENT** Small Queen tied to matching colour **MIXED FRANKING** to TORONTO AM 30 MAY 70 ONT cds to London Ont, LONDON PM 30 MY C.W. receiver on reverse, flap and cover tears. Est. 500+.....



- 40 ☒ 25: **THREE CENT: RED**, tied to **FANCY EMBOSSED VALENTINE** cover, ALMONTE 14 FE 70 U.C. cds, including colourful enclosure, to Ontario, slightly reduced at right, small tear and partial back missing, appears fine. Ex. Wellburn. Est. 350+.....



- 41 ☒ 25: **THREE CENT: RED**, tied to mourning cover by grid, NORTH SYDNEY 19 JA 70 C.B to Truro, with manuscript "Over Weight" and "More to Pay 7¢", SYDNEY 19 JA 70 C.B and PORT HASTINGS 20 JA 1870 backstamps. Ex. Menich. Est. 500+.....



- 42 ☒ 25,27: **THREE CENT: RED**, five copies, plus **SIX CENT DARK BROWN** (Plate 1) tied to large Registered cover by PETERBORO 6 NO 69 C.W duplexes to Toronto, straight line REGISTERED, TORONTO 8 NO 69 receiver on reverse, cover folded with repaired tear UR affecting top left stamp. (Sextuple domestic Rate and Registry overpaid by 1¢). Est. 1250+.....



43



44

- 43 ☒ 25vii: **THREE CENT**: RED, vertical pair (faulty) with **SHAVING NICK** variety, tied to cover by **2-RING-12** cancels, ST. CATHERINES WEST PM 31 JY 69 ONT cds, addressee cut out and repaired tear and slight reduction at left, still appears fine. **RARE ON COVER**. Est. 1000+
- 44 ☒ 26: **FIVE CENT**: OLIVE GREEN, perf 11½x12, tied to Registered cover, with boxed REGISTERED to Napierville, MONTREAL 3 NO 75 C.E and same day STOTTVILLE cover slightly reduced at left and repaired internal tear LL, appears fine. The proper period for this usage was between October 1, 1875 (the 5¢ issued) and November 15, 1875 (Registered Letter Stamp issued). Ex. Leggett, Menich. Est. 350+

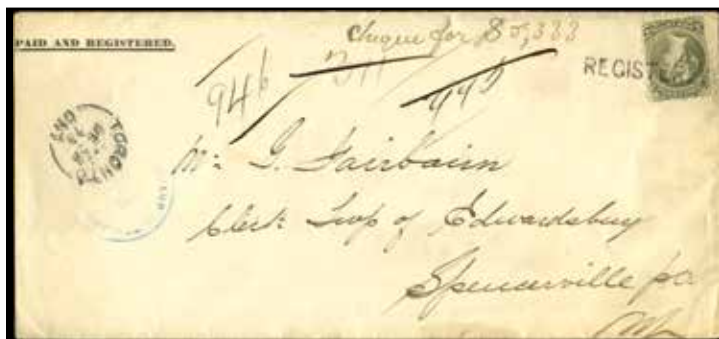


45



46

- 45 ☒ 26: **FIVE CENT**: OLIVE GREEN, perf 11½x12, pair (faulty) tied to cover, with red PAID LONDON D X PAID 14 JY 77 to London, MONTREAL 2 JUL 77 QUE backstamp on reverse, rough edges and tears, appears fine. Est. 250+
- 46 ☒ 26,37: **FIVE CENT**: OLIVE GREEN, perf 11½x12, plus **THREE CENT DULL RED** Small Queen tied to **DOUBLE WEIGHT REGISTERED MIXED FRANKING** repaired cover by straight line REGISTERED, WALLACETOWN 22 OC 73 ONT to St Thomas, with CA-SOUTHERN-R EAST 22 OC 75 (Ludlow RR-15 RF295) double split ring, boxed REGISTERED C.S.R. and ST THOMAS 22 OC 75 ONT receiver on reverse. Ex. Harrison. Est. 1000+



- 47 ☒ 26: **FIVE CENT**: OLIVE GREEN, perf 11½x12, tied to large TREASURY DEPARTMENT ONTARIO **PAID AND REGISTERED** envelope by straight line REGISTERED, with TORONTO 22 DE 75 ONT split ring and blue 1875 PROVINCE OF ONTARIO cancel, to Spencerville, PRESCOTT AM 23 DE 79 ON transit and SPENCERVILLE 23 DE 75 ONT receiver on reverse, trimmed at left. Est. 350+



48



49

- 48 ☒ 26iv,36e: **FIVE CENT**: OLIVE GREEN, **PERF 11½x12**, plus **TWO CENT** DEEP GREEN, **PERF 11½x12**, Small Queen **MIXED FRANKING** on cover, PICTOU 3 NO 76 N.S. CANADA to River John, paying **TRIPLE INTERNAL RATE**, manuscript O.H.M.S., blue RIVER JOHN 3 NO 76 receiver on reverse, light soiling around edges of stamps and back flap missing and some restoration. 2020 Greene Cert. Est. 1500+.....
- 49 ☒ 27,24,37: **SIX CENT**: DARK BROWN (Plate 2), plus **TWO CENT** GREEN (off-center and faulty) and **THREE CENT** ORANGE RED Small Queen, oxidized and creased, tied to **MIXED FRANKING** cover with Grid cancel CANNIC 30 NO 1870 N.S. double split ring, two line **REGISTERED LETTER** No straight line to Kentville N.S., KENTVILLE 30 NO 70 N.S. receiver, cover with some wrinkling, back flap torn. Triple Weight plus Registry fee. (One of only **TWO** recorded examples of this rate and franking). Est. 750+.....



- 50 ☒ 27,24: **SIX CENT**: DARK BROWN (Plate 1) strip of three and **TWO CENT** GREEN, tied to large Registered letter (slightly repaired) by **2-RING-12**, with ST. CATHERINES WEST PM 23 JU 70 ONT cds to Toronto, paying **SEXTUPLE RATE** with straight line **REGISTERED**, no receiver. (Only reported Registered cover with 2¢ and 6¢ Large Queen franking). Ex. Dale-Lichtenstein. Est. 1000+.....



- 51 ☒ 27a,24,37: **TWO CENT**: GREEN, **SIX CENT** YELLOW BROWN (Plate 2), plus **THREE CENT** ORANGE RED Small Queen tied to **MIXED FRANKING** cover by PETERBORO 18 DE 71 ONT cds cancels, **REGISTERED** straight line to Toronto, no receiver, trimmed left, right and top and repaired at left. Triple Weight plus Registry fee. (The other of only **TWO** recorded examples of this rate and franking). Est. 2000+.....



52

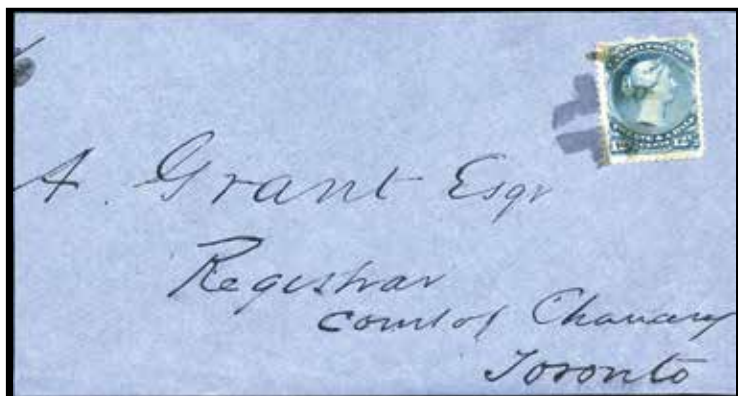


53

- 52 ☒ 27a.35iv: **SIX CENT: YELLOW BROWN** (Plate 1), strip of four (faulty), plus **ONE CENT RED ORANGE** Small Queen tied to **MIXED FRANKING** large piece of wrapper paying **TWENTY-FIVE CENT PARCEL POST RATE** (over 8 oz and not exceeding 1 lb) by fancy cork cancels, still RARE. Ex. Brassler. Est. 500+.....
- 53 ☒ 27a,37b: **SIX CENT: YELLOW BROWN** pair, plus **THREE CENT INDIAN RED** Small Queen paying **MIXED FRANKING QUINTUPLE RATE** tied to fancy cork cancels with GUELPH PM 16 SP 70 ONT cancels to Stratford, partial STRATFORD 17 SP 70 receiver on reverse, reduced at bottom and left. Est. 500+.....



54



55

- 54 ☒ 28,24,25: **TWELVE AND A HALF CENT: BLUE** (2), **TWO CENT GREEN** plus **THREE CENT RED** on large part (folded) of **TWO TIMES PARCEL POST RATE** and REGISTERED wrapping, cancelled by ink lines, to Montreal, with light 25 FE 69 C. E. cds at corner, perf faults, colourful. RARE franking, 25¢ postage (more than 8oz plus 5¢ Registration). Ex. Harrison. 2020 Greene Cert. Est. 1250+.....
- 55 ☒ 28: **TWELVE AND A HALF CENT: BLUE**, tied to large blue piece by segmented cork, to Toronto, fine. (Parcel Post Rate up to 8oz). Est. 750+.....



- 56 ☒ 28: **TWELVE AND A HALF CENT: BLUE**, pair, plus **ONE CENT** Small Queens pair tied to large front (folded) with target cancels, **MIXED FRANKING** with YARMOUTH N.S. 3 MY 76 DOMINION OF CANADA cds, paying **NINE TIMES DOMESTIC RATE**, with manuscript 'On H. M. Service' and 'Queen vs Francis and Firris' to Halifax N.S. Est. 1500+.....



57



58

- 57 ☒ 29b,24: **FIFTEEN CENT**: GREYISH PURPLE (Firth's IIA), three copies, plus **TWO CENT GREEN** (faulty) tied to large part of large cover by segmented fancy cork, OTTAWA PM 29 AU 70 C.W cds to Court of Chancery Toronto, 2¢ appears to have been washed off and partially reattached, cover torn. Est. 1250+.....
- 58 ☒ 29a,37a: **FIFTEEN CENT**: MUDDY BROWNISH PURPLE (Firth's VB), **PERF 11½x12**, plus **THREE CENT ROSE** Small Queen strip of three tied to **MIXED FRANKING** large piece of Registered cover with blue WINDSOR 10 NO 76 ONT cds cancels and matching straight line boxed REGISTERED to Sandwich Ontario. (Post Office Notice of 1 Oct 1876 requiring proper registration stamp was not immediately enforced.). Est. 750+.....



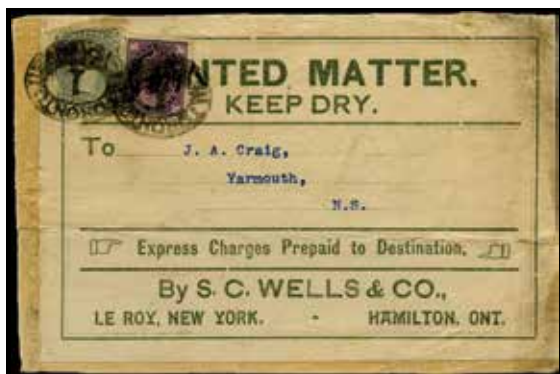
59



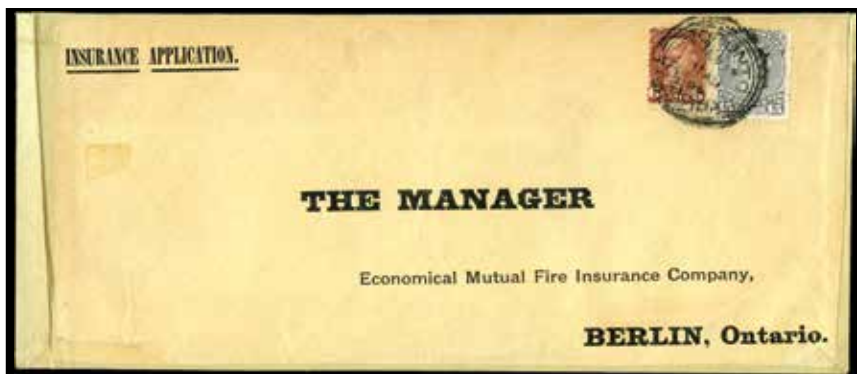
60

- 59 ☒ 29a,39b: **FIFTEEN CENT**: GREYISH PURPLE (Firth's IIB), **PERF 11½x12**, pair, file fold through left stamp and right stamp large tear UR plus **SIX CENT** Small Queen **MIXED FRANKING** on large cover, BRUC(E MIN)ES JU 77 ONT cds, Toronto receiver on reverse, reduced at top and right. 2020 Greene Cert. Est. 1000+.....
- 60 ☒ 29i: **FIFTEEN CENT**: GREYISH PURPLE (Firth's XIII), two toned copies tied to large, trimmed MASSEY-HARRIS CO return envelope by BRANTFORD 18 JY 98 cds cancels to Toronto, TORONTO 23 18 JY 98 CANADA receiver, some internal repairs LR and staining, otherwise appears fine. Est. 350+.....
- 61 ☒ 30,41: **FIFTEEN CENT**: GREY, pair, plus **THREE CENT VERMILION** Small Queen tied to **MIXED FRANKING NEWSPAPER** receipt page by TORONTO 9 AP 95 ONT cds cancels for 33 pounds, other side with 2¢ and 5¢ Small Queens tied by TORONTO 27 MR 95 ONT cds cancels. Est. 750+.....



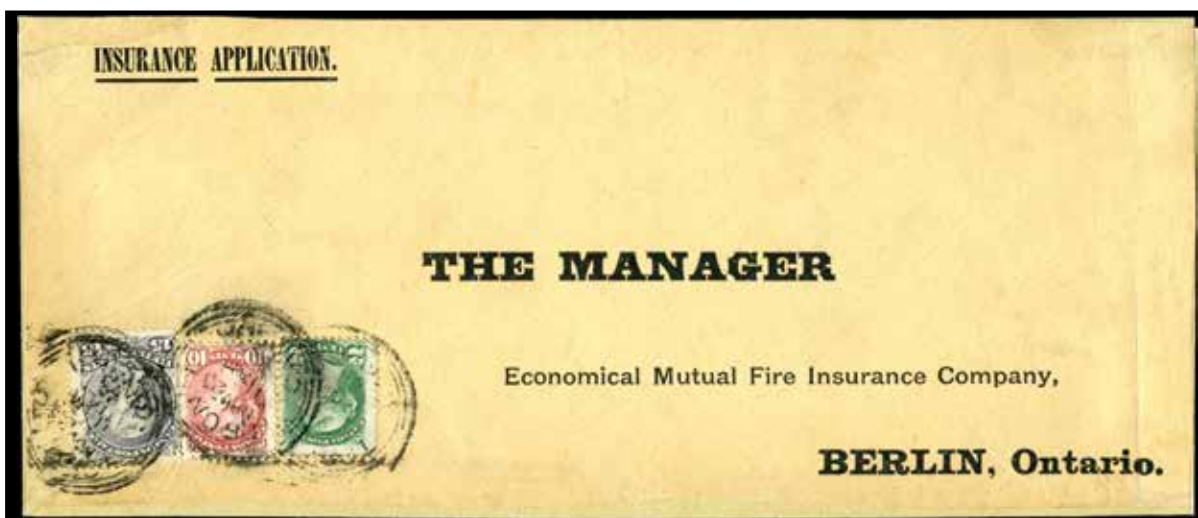


62



63

- 62 ☒ 30,68: **FIFTEEN CENT**: GREY, plus **TWO CENT** Leaf tied to **MIXED FRANKING** large **EXPRESS PRINTED MATTER** label on piece with TORONTO 1 oval parcel cancels, to Yarmouth N.S., some light soiling at right. RARE. Est. 1000+.....
- 63 ☒ 30,43: **FIFTEEN CENT**: SLATE VIOLET (Firth's XII), plus **SIX CENT** RED BROWN Small Queen tied to **MIXED FRANKING** large part of Insurance Application front (adhered to envelope), with large TORONTO 23 NOV 11AM 95 CANADA 4-ring to Berlin Ontario, appears very fine. Est. 300+.....



- 64 ☒ 30,36,45a: **FIFTEEN CENT**: SLATE VIOLET (Firth's XII), plus **TWO CENT** GREEN and **TEN CENT** ROSE CARMINE Small Queens tied to **MIXED FRANKING** large part of Insurance Application front (adhered to envelope), with multiple large TORONTO 23 NOV 11AM 95 CANADA 4-ring to Berlin Ontario, appears very fine. Est. 600+.....



- 65 ☒ 30b,36,40a,F1: **FIFTEEN CENT**: DEEPER BLUISH GREY (Firth's XB), plus **TWO CENT** GREEN, **TEN CENT** MAGENTA (perf faults) Small Queens and **TWO CENT** Registered Letter Stamp tied to **FOUR COLOUR MIXED FRANKING** large piece by straight line REGISTERED cancels, paying **NINE TIMES RATE** to Toronto, partial 83 ONT cds. 2020 Greene Cert. Est. 2000+.....



- 66 ☒ 30b,37,F1: **FIFTEEN CENT**: DEEP BLUISH GREY (Firth XB), plus **THREE CENT** Small Queen and **TWO CENT** Registered Letter Stamp tied to large **MIXED FRANKING** Registered cover to Court of Queen's Bench Winnipeg Manitoba, with REGISTERED 5 AP 84 TORONTO, ONT cds, bold straight line REGISTERED, and blue FILED, PROTHONOTARY'S OFFICE WINNIPEG 10 APR 1884 receiver on front, WINNIPEG 9 AP 84 CANADA and two more Toronto Registered cancels and red seal on reverse, reduced at right. 2020 Greene Cert. Est. 4000+.....



- 67 ☒ 30i: **FIFTEEN CENT**: SLATE PURPLE (Firth's XIII), plus **THREE CENT** DARK ROSE Small Queen, **MIXED FRANKING SEXTUPLE RATE** tied by segmented cork to large piece, PARRY SOUND 11 NO 91 ONT to Toronto. Est. 600+.....

FOREIGN DESTINATIONS



- 68 22,24,27,29b: A magnificent pair of covers sent to **AUSTRALIA**. One mourning cover paying 23¢ with **TWO CENT GREEN**, **SIX CENT DARK BROWN** (Plate 1) and **FIFTEEN CENT REDDISH PURPLE**, from BRANTFORD 29 MR 68, **MAILED TWO DAYS BEFORE STAMPS ISSUED**, HAMILTON 30 MR 1868 transit and small blue MELBOURNE 7 JY 68 receiver on reverse, via London with red LONDON D PAID A 13 MY 68 and Suez. The second matching cover paying the 22¢ rate with **ONE CENT BROWN RED**, **SIX CENT DARK BROWN** (Plate 1) and **FIFTEEN CENT RED VIOLET**, tied by HAMILTON PM 10 JU 68 duplexes, oval 6d MORE TO PAY and red 24 handstamps, via New York and A PANAMA 25 JU 68, small blue MELBOURNE 3 A 28 AU 68 receiver on reverse, from the same correspondence. Ex. Firth, Wellburn, Harrison, Richardson. Est. 25000+.....



- 69 ☒ 30b: **FIFTEEN CENT**: BLUISH GREY (Firth's XB), tied to cover BRANTFORD ONT PM 28 AP 87 CANADA duplex to Sydney, New South Wales **AUSTRALIA** and **REDIRECTED** to Melbourne, Victoria, with oval MORE TO PAY and manuscript "2"(d), WINDSOR AM 23 87 CANADA, SAN FRANCISCO CAL. STM. SHIP MAY 6 D transits and SYDNEY H 31 MY 87 S, MELBOURNE ? 87 receivers on reverse, rough edges and repaired at left, still fine. **PRE-UPU RATE**. Ex. Arfken. Est. 2500+



- 70 ☒ 30: **FIFTEEN CENT**: SLATE VIOLET (Firth's XII), plus **THREE CENT** and **SIX CENT** Small Queens tied to **WELLS FARGO EXPRESS** cover, VICTORIA 21 DE 74 BRIT COL to Prag **BOHEMIA**, red LONDON M PAID 20 JA 75 transit on front, WINDSOR 5 JA 75 transit and PRAG 22 8 JA 75 receiver, trimmed at bottom. (Only recorded stamped pre-UPU 24¢ double rate cover to Austria via the USA). Est. 10000+



- 71 ☒ 30vars,45a,42: **FIFTEEN CENT**: Pair and two singles which are replacing two original stamps, plus **TEN CENT ROSE CARMINE** and **FIVE CENT GREY** Small Queens **MIXED FRANKING** mostly tied to large part of cover, HALIFAX 2 25 AU 90 CANADA cancels, to Colombo, **CEYLON**. (The only recorded Large Queen Cover to Ceylon). Est. 5000+.....



- 72 ☒ 21,28i,35iv,37b: **HALF CENT**: BLACK with **SPUR** variety (faulty) and **TWELVE AND A HALF CENT MILKY BLUE**, plus **ONE CENT ORANGE RED** (faulty) and **THREE CENT INDIAN RED** Small Queens, mostly tied to **FOUR COLOUR MIXED FRANKING** cover paying **SEVENTEEN CENT PRE-UPU ALLAN LINE RATE** from MURRAY-BAY QUE 2 JY 70 to Pyrenée **FRANCE** Calais 19 JUIL 70 with red London 18 JY PAID transit on front and QUEBEC C.E. 3 JY 70 transit and Paris A Caen 19 JUIL 70 B RPO on reverse. Cover repaired at right, still **RARE**. (One of two recorded Large Queen covers of this rate). 2018 Greene Cert. Est. 10000+.....



- 73 ☒ 26: **FIVE CENT**: OLIVE GREEN, perf 11½x12, pair tied to cover ST. HYACINTHE 9 DE 75 C.E to **FRANCE** via **ALLAN LINE** with red LONDON N PAID 22 DE 75 and same colour PD in circle, 23 DEC 75 CALAIS transit on front, MONTREAL 10 DE 75 C.E and PARIS transits on reverse, clean and very fine. **RARE**. (Only three covers recorded at this rate). 1998 BPA Cert. Est. 2500+.....



- 74 ☒ 22,27a(2),37a: **ONE CENT**: BROWN RED and two **SIX CENT** YELLOW BROWN, plus **THREE CENT** ROSE Small Queen, the **SIXTEEN CENT PRE-UPU MIXED FRANKING** tied by MONTREAL P.M. 17 NO 71 C.E duplexes to Munich **BAVARIA** (GERMANY), with red LONDON PAID 29 NOV 71, violet manuscript 6(d), red PD in circle and ANGL 30 NOV 71 receiver all on front, same French receiver on and 45 in circle on reverse, back flap missing, still fine. Est. 4000+.....



- 75 ☒ 30: **FIFTEEN CENT**: SLATE VIOLET (Firth's XII), tied by CLINTON ST TORONTO cds to Marks Stamp Co. return Registered letter to Potsdam **GERMANY**, with red REGISTERED LONDON B 12 NO 04 E and POTSDAM 13.11.04 6-7N cancels, plus Marks' label. (Double 5¢ rate and 5¢ registry). Est. 1000+.....



76

77

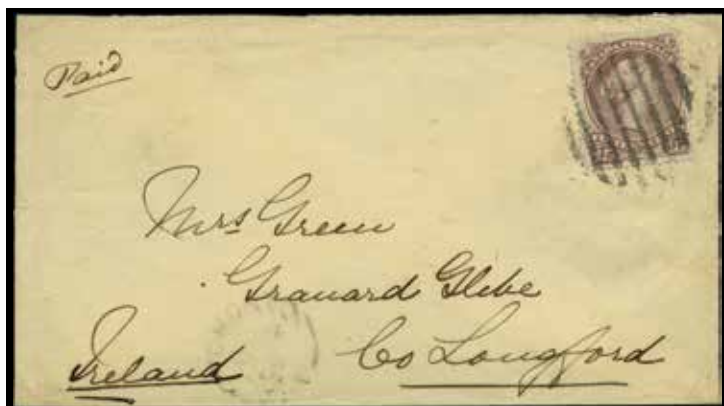
- 76 ☒ 30b: **FIFTEEN CENT**: DEEPER BLUISH GREY (Firth's XI), tied to Registered cover with R in oval posted MONTREAL CANADA 1P1 NO 95 to Budapest **HUNGARY**, purple REGISTERED LONDON D 10 NO 95 transit on front, BUDAPEST 95 NOV.12.N8 D receiver on reverse, reduced at right. (10¢ UPU rate plus 5¢ registry). Ex. Menich. **ONLY RECORDED LARGE QUEEN COVER TO HUNGARY**. Est. 5000+.....
- 77 ☒ 29b,37a: **FIFTEEN CENT**: REDDISH PURPLE (Firth's IIA) strip of three (faulty), plus **THREE CENT ROSE** Small Queen tied to **MIXED FRANKING** on blue **INDIAN DEPARTMENT** cover to Bombay, **BRITISH INDIA** via New York, LONDON B PAID A 5 FE 72, **REDIRECTED** to LIVERPOOL 9 AP 72 receiver, MORE TO PAY hand stamp and 6(d), oval **SEA.POST A 32.2.** on reverse, cover slightly reduced at left and repaired at top, appears fine. 2005 Greene Cert. Est. 3500+.....



78

79

- 78 ☒ 27,24iii: **SIX CENT**: DARK BROWN (short perfs at top) and **TWO CENT GREEN** on **SOFT WHITE PAPER** (repaired), on cover with FRANKVILLE U.C. double split ring with manuscript 18 MR 70 to **IRELAND** with MONTREAL A.M 20 MR 70 transit and C WEXFORD 4 AP 70 receiver on reverse, Cunard rate via New York, back flap torn, still fine. Est. 250+.....
- 79 ☒ 28: **TWELVE AND A HALF CENT**: BLUE, pair, perf faults and corner crease UL, tied to cover LINDSAY 3 AU 69 C.W to **IRELAND**, MONTREALPM5AU69andMULLINAHONE 17AU1869transits,ACALLAN 17AU69receiverall on reverse, edgetears, still fine. Est. 350+.....



80



81

- 80 ☒ 29b: **FIFTEEN CENT**: DEEP RED LILAC (Firth's IVB), tied to cover by grid, with TORONTO 2 NO 68 cds to Longford **IRELAND**, 14 NO 68 transit and 15 NO 68 receiver on reverse, cover with light repairs at edges, still appears very fine. Ex. Leggett. Est. 1000+.....
- 81 ☒ 26,36,37ii: **FIVE CENT**: OLIVE GREEN, perf 11½x12, plus **TWO CENT GREEN** and **THREE CENT DULL RED**, perf 11½x12, Small Queens tied to **MIXED FRANKING RICHEY BELL & Co Stamp Dealers** cover by HALIFAX 9 MR 78 N.S. cancels, to **ITALY** with red LONDON N PAID and crayon 2 1/2 British Claim marking on front, MODENA 31 3 78 receiver on reverse, opening tears mostly on back flap, still clean and very fine. **RARE**. Ex. Arfken. 2021 Greene Cert stating "#26 did not originate on this cover". Est. 1000+.....



- 82 ☒ 27a,21: Two **SIX CENT**: YELLOW BROWN (Plate 2) and **HALF CENT BLACK** off-center, all with target cancels on blue folded cover NEW RICHMOND 6 FE 72 C.E. to **NEWFOUNDLAND** via Halifax, to SAINT JOHN'S NEWFOUNDLAND 1 MR 1872 receiver on reverse. Filing fold through ½¢, part of wax seal torn from cover. **RARE**. Est. 5000+.....



83



84

- 83 ☒ 28: **TWELVE AND A HALF CENT**: BLUE (faulty as perfs above top of cover) and **HALF CENT BLACK** tied to cover, CANNING 4 OC 1871 N.S. to **NEWFOUNDLAND**, HARBOUR GRACE 10 OC 1871 receiver on front, PORT-WILLIAMS STATION 4 OC 71 N.S. and H 5 OC 71 in oval transits, ST. JOHN'S NEWFOUNDLAND 10 OC 1871 receiver all on reverse, reduced at left, appears very fine. Ex. Pratt, deVolpi. **RARE**. (Stated to be one of two examples of this overpayment). Est. 1000+.....
- 84 ☒ 28: **TWELVE AND A HALF CENT**: BLUE, tied to cover CANNING 17 MY 1872 N.S. to **NEWFOUNDLAND**, HARBOUR GRACE 24 MY 1872 receiver on front, reduced at left, appears very fine. (Illustrated in Arfken Canada's Small Queen Era 1870-1897 pg. 276). Est. 500+.....



- 85 ✉ 30: **FIFTEEN CENT**: DEEP GREYISH BLUE (Firth's IX), perf 12, strip of four and pair tied by 3 OTTAWA 1 MR 81 early Squared Circle cancels, to cover to Wellington **NEW ZEALAND**, WINDSOR AM 3 MR 81 ONT and red SAN FRANCISCO CAL 10 MAR transits, NZ WELLINGTON AP 81 receiver, cover with tears and repaired, appears very fine. Ex. Wellburn. Est. 5000+.....



86



87

- 86 ✉ 30b: **FIFTEEN CENT**: BLUISH GREY (Firth's XB), on mourning cover PORT HOPE 2 FE 87 ONT cancelled with fancy segmented cork to Dunedin **NEW ZEALAND**, manuscript "Via San Francisco", SAN FRANCISCO CAL FEB 9 and SAN FRANCISCO CAL FEB 12 D ST. SHP transits, and 12 MR 87 receiver on reverse, opening tears at top and back, still fine. **PRE-UPU RATE**. Ex. Arfken. Est. 2000+.....
- 87 ✉ 30b: **FIFTEEN CENT**: DEEPER BLUISH GREY (Firth's XB), on The World Publishing Co'y return cover, GUELPH 21 JY 87 CANADA cancelled with fancy segmented cork to Auckland **NEW ZEALAND**, WINDSOR 22 JY 87 CANADA, SAN FRANCISCO CAL JUL 28 REC'D and SAN FRANCISCO CAL JUL 29 D ST. SHP transits, and N.Z AUCKLAND 18 AU 87 receiver on reverse, slightly reduced at right, fine. **PRE-UPU RATE**. Ex. Arfken. 2001 Greene Cert. Est. 1500+.....



- 88 ☒ 30b,40b,F3: **FIFTEEN CENT**: DEEP BLUISH GREY (Firth's XI) pair, plus **TEN CENT** LILAC ROSE Small Queen and **EIGHT CENT** Registered Letter Stamp (out of period), all tied to **MIXED FRANKING** large piece by large targets, with HALIFAX 8 FE 80 CANADA cds cancels, to Lisbon **PORTUGAL**, red oval REGISTERED R 19 FE 90 LONDON. Ex. Burrus, Smythies. (The only recorded Large Queen Cover to Portugal). Est. 10000+.....



89



90

- 89 ☒ 26: **FIVE CENT**: OLIVE GREEN, perf 11½x12, tied to cover by MONTREAL 19 MR 77 QUE duplex, with red PAID LIVERPOOL U.S. PACKET 2 AP 77 2D to **SCOTLAND**, INVERKEITHING A 3 AP 77 receiver on reverse, rough edges otherwise appears fine. Est. 150+
- 90 ☒ 29a: **FIFTEEN CENT**: MUDDY BROWNISH PURPLE (Firth's VA), **PERF 11 1/2x12**, tied to large cover by segmented cork, paying **THREE TIMES RATE** with red PAID LIVERPOOL BR. PACKET 12 DE 75 to Edinburgh **SCOTLAND**, HALIFAX PM 25 NO 75 N.S. transit and 13 S EDINBURGH 13 DE 75 receiver on reverse, filing folds through stamp, appears very fine. **RARE**. Ex. Arfken. Est. 1000+



- 91 ☒ 21,28: **HALF CENT: BLACK** (five pairs, one with missing corner) and **TWELVE AND HALF CENT BLUE** (small faults), on cover **MULTI-COLOURED FRANKING**, TORONTO AM 19 AU 75 cds, manuscript "Canadian Steamer" to Brighton, **ENGLAND**, BRIGHTON 31 AU 75 A receiver, short paying 18¢ **TRIPLE RATE**. (The only known such franking paying triple letter rate to the United Kingdom). Ex. deVolpi. 2021 Greene Cert. Est. 7000+.....



- 92 ☒ 24i,37a: **TWO CENT: PALE EMERALD GREEN**, two copies, left one crease at top, plus **THREE CENT ROSE** Small Queen strip of four, right two with crease, tied to **MIXED FRANKING** large cover by MONTREAL AL 18 MR 72 C.E duplexes, to Liverpool **ENGLAND**, paying **SIXTEEN CENT DOUBLE CUNARD LINE RATE** via New York, with red LIVERPOOL U.S. PACKET 2 AP 72 3A cancel on front. Cover folds at left and back flap torn. Est. 1250+.....



- 93 ☒ 26: **FIVE CENT**: OLIVE GREEN, perf 11½x12, two single franking covers with blue cancels to **UNITED KINGDOM** paying 5¢ preferred rate, one WHYCOCOMAGH CB 5 FE 77 C.B to **SCOTLAND** with GLASGOW PACKET/PAID/MR 2/1877, HALIFAX PM 17 FE 77, PORT - HASTINGS transit and 15 A EDINBURGH 2 MR 77 receiver, other cover SYDNEY 8 OC 77 N.S to London with HALIFAX OC 77 transit and LONDON 24 OC 77 receiver, toning and some foxing. Est. 150+.....



94



95

- 94 ☒ 27: **SIX CENT**: DARK BROWN (Plate 1), off-center showing part of stamp below (faulty), paying ALLAN LINE rate on cover (S) AUGUST 25 JA 1870 C UC with manuscript "Via Canadian Line" to **ENGLAND** with red LONDON E.C PAID 11 FE 70 and LONDON W EM same date receiver on reverse, light all over toning, fine. Est. 350+.....
- 95 ☒ 27a: **SIX CENT**: YELLOW BROWN (Plate 1), on cover MON(TREAL) MY 71 to London **ENGLAND, RE-DIRECTED** with added 1d Penny red perforated (Plate 118), red LONDON PAID 18 MY 71 receiver on front, rough edges, staining at bottom and back flap missing. Est. 1000+.....



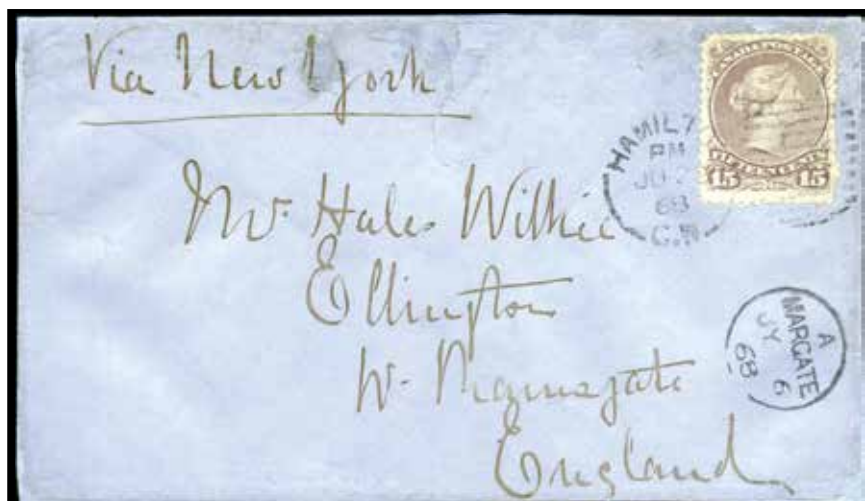
- 96 ☒ 28: **TWELVE AND A HALF CENT**: BLUE, some foxing at left perfs, tied to cover by MONTREAL PM 12 MR 69 C.E CAN to **ENGLAND**, via Canadian ALLAN LINE, with red LONDON F PAID A 26 MR 69, LONDON - E.C 4 27 MR 69 B and LONDON JD same date cancels, redirected within, requiring ADDITIONAL 1d on reverse, fine. Est. 500+.....



- 97 ☒ 28: **TWELVE AND A HALF CENT**: BLUE, SYDNEY 2 FE 69 C.B to Plymouth **ENGLAND**, addressed to Royal Navy Lieutenant aboard H.M.S. Lion, Redirected to Prestbury Cheltenham with red PAID LIVERPOOL RB. PACKET 24 FE 69 2B, tied by DEVONPORT B10 26 FE 69 duplex receiver, CHELTENHAM 27 FE 69 and DEVONPORT A10 25 FE 69 receivers on reverse, fine. (Stated to be one of three reported Officer's Letters bearing a Large Queen stamp). Est. 1250+.....



- 98 ☒ 28,28ii: **TWELVE AND A HALF CENT**: BLUE (2), one **MISSING OUTER FRAMELINE AT VALUE TABLET AT RIGHT** on front with MONTREAL 24 SP 69 C.E. to **ENGLAND**, manuscript "per Canadian Steamer" and red LONDON B 01 PAID 5 OC 69 receiver on front, appears very fine. Est. 500+.....



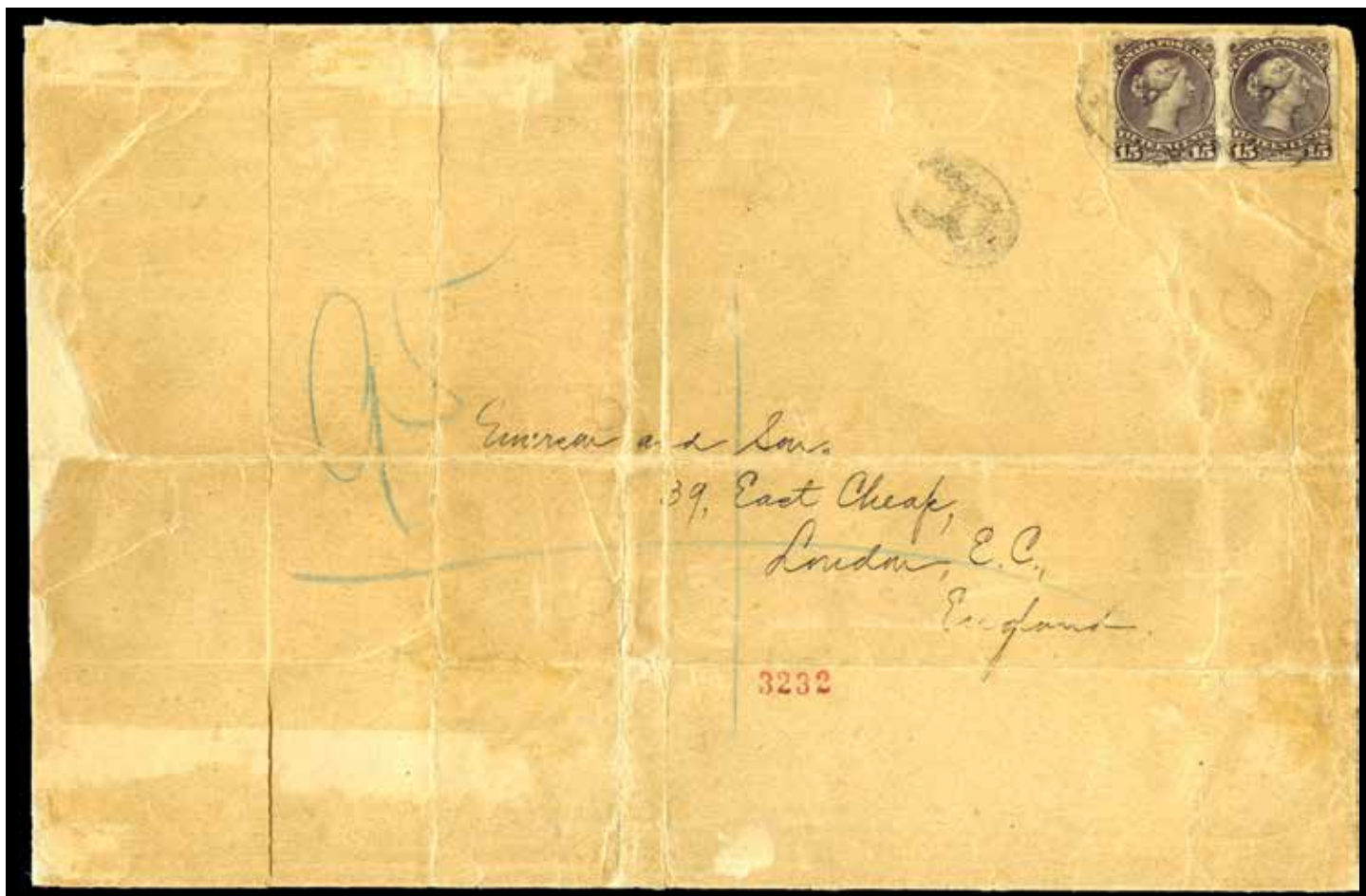
- 99 ☒ 29: **FIFTEEN CENT**: DEEP REDDISH PURPLE (Firth I), couple small tears, tied to repaired cover HAMILTON PM 2 JU 68 C.W duplex to **ENGLAND**, manuscript "Via New York", A MARGATE 6 JY 68 transit on front and back, RAMSGATE C 6 JY 68 receiver, appears fine. Est. 1000+.....



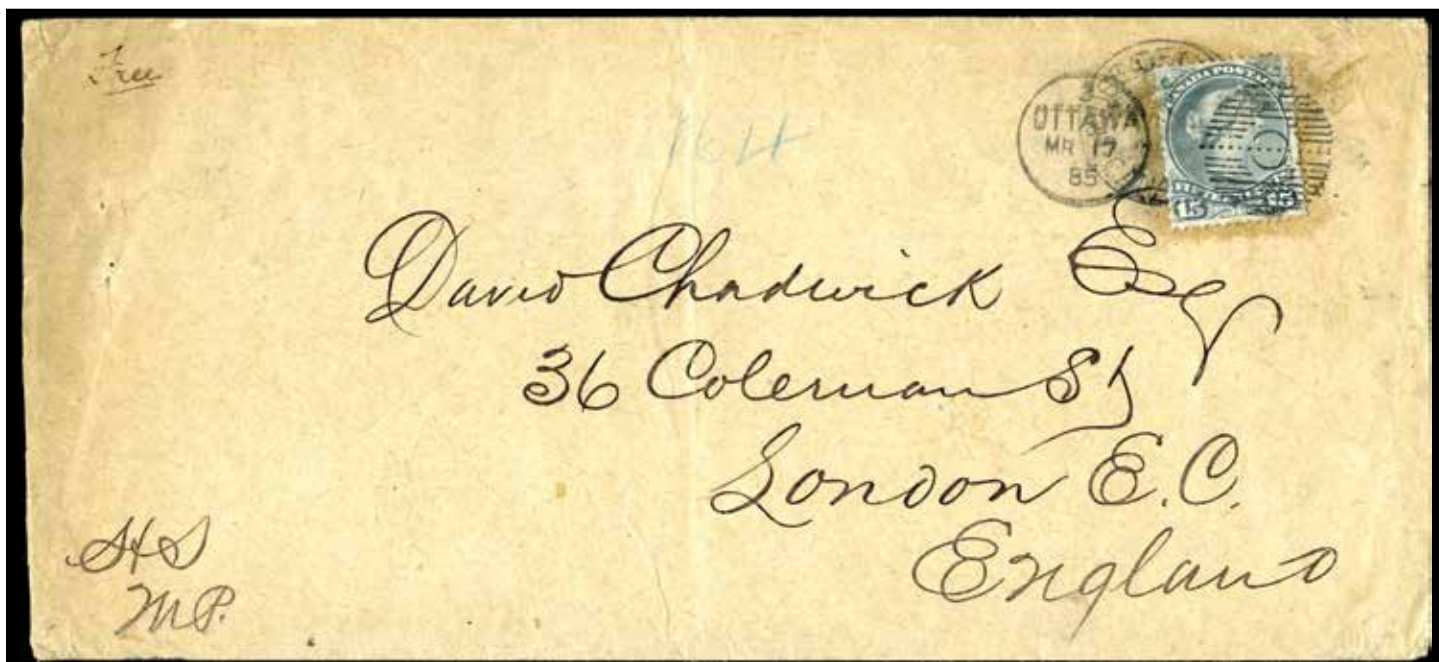
- 100 ☒ 29,45a,F2: **FIFTEEN CENT**: GREYISH VIOLET (Firth's XII), BLOCK OF TEN (some separation), and two strips of three, plus **TEN CENT DEEP ROSE CARMINE** Small Queen and **FIVE CENT GREEN** Registered Letter Stamp **MIXED FRANKING** on large piece paying \$2.50 **PARCEL POST** and 5¢ Registry Fee to **ENGLAND. SHOWPIECE**. (The largest multiple of the 15¢ stamp recorded on cover). Ex. Firth. Est. 15000+.....



- 101 ☒ 29: **FIFTEEN CENT**: VIOLET GREY (Firth's XII), pair (right stamp creased) tied to large pre-printed cover by VICTORIA B.C. 2 roller cancel with VICTORIA BC PM 27 MY 97 CANADA cds, manuscript 'Registered', to **ENGLAND**, red REGISTERED LONDON B 12 JU 97 9 on front, MONTREAL CANADA 2 JU 97 transit, large blue company back stamp, folded in middle. Est. 750+.....



- 102 ☒ 29d: **FIFTEEN CENT: BROWN PURPLE, IMPERFORATE PAIR**, right stamp creased, tied to large folded Registered cover to London **ENGLAND**, large blue crayon registry marking, two MONTREAL PM 21 AU 06 CANADA cancels and red REGISTERED LONDON 30 AU 06 receiver on reverse, paying 6 oz rate plus Registry fee, overpaid 1¢. Ex. Firth. (Illustrated in L. Gerald Firth "Canada the fifteen cents of 1868" pg. 30. **UNIQUE**. 2004 Greene Cert. Est. 10000+.....)



- 103 ☒ 30b: **FIFTEEN CENT: BLUISH GREY** (Firth's XA), tied to large HOUSE OF COMMONS CANADA cover by 3 OTTAWA 17 MR 85 duplex on top of HOUSE OF COMMONS CANADA cancel, manuscript 'Free' UL and 'HS MP.' (Henry Smyth) LL to **ENGLAND**, red LONDON E.C. A 30 MR 85 receiver on reverse, folded at center. RARE cancel, Ex. Firth. Est. 1500+.....)



104



105

- 104 ☒ 21,34: **HALF CENT**: BLACK, two pairs, plus **HALF CENT** BLACK Small Queen pair (one straight edge), tied to **MIXED FRANKING** cover SIMCOE 11 MY 96 ONT to Buffalo New York (USA), HAMILTON 7 AM 12 MY 86 CANADA transit and BUFFALO, N.Y. MAY 12 1 PM 1886 REC'D receiver, opening tears at left and repairs, appears fine. Est. 250+.....
- 105 ☒ 21,34: **HALF CENT**: BLACK, strip of five, plus **HALF CENT** BLACK Small Queen tied to **MIXED FRANKING** pre-printed cover by ST THOMAS 28 AP 87 ONT large cds cancels, Plymouth Mich. (USA), no receiver, cover slightly reduced and repaired at right, appears fine. Est. 250+.....



- 106 ☒ 21,21iii,21iv: **HALF CENT**: BLACK, pair, block of four and block of six, all with **SPUR** variety and two strong **CHIGNON** varieties, TORONTO 16 AU 69 ONT to Albany NY (USA) on **ADVERTISING** cover, New York CARRIER 17 AUG cancel on front. Flap torn. Used blocks on cover are rare. Ex. V. G. Greene. Est. 1500+.....



- 107 ☒ 22b,15: **ONE CENT**: BROWN RED on **THIN PAPER**, plus **FIVE CENT** VERMILION 1859 Beaver (faulty) tied to **MIXED FRANKING** cover with grids, TORONTO P.M AP 29 68 C.W cds, paying 6¢ rate to New York (USA), no receiver, cover repaired at top. 2020 Greene Cert. Est. 3000+.....



108



109

- 108 ☒ 24: **TWO CENT: GREEN**, strip of three, tied by QUEBEC 24 DE 70 C.E. Berri duplex cancels, no receiver, paying 6¢ rate to Lawrence (USA), overall toning, edge faults and back flap torn. Est. 100+.....
- 109 ☒ 24iii: **TWO CENT: GREEN** pair on **SOFT WHITE PAPER**, and **ONE CENT YELLOW ORANGE** pair (faulty), all pen cancelled by faded cds with manuscript 2 JU 70, no receiver, paying 6¢ rate to Morrow County Ohio (USA), slightly reduced at left, corner faults and back flap torn. Est. 200+.....



110



111

- 110 ☒ 25: **THREE CENT: RED**, two tied to pre-printed **A. RAMSAY & SON. IMPORTERS OF WINDOW GLASS, OILS, PAINTS, &c.** by MONTREAL PM 28 JA 69 duplex cancels to folded letterhead sheet, to Detroit (USA), filing folds and back flap missing, fine. Est. 600+.....
- 111 ☒ 25: **THREE CENT: RED**, pair tied by OTTAWA PM 23 SP 68 C.W duplex cancels to cover to Charleston South Carolina (USA), part back flap missing, fine. Est. 100+.....



112



113

- 112 ☒ 26,37: **FIVE CENT: OLIVE GREEN**, perf 11½x12, plus **THREE CENT ORANGE RED** Small Queen tied to **MIXED FRANKING** Registered cover, OXLEY 13 NO 76 two straight line REGISTERED to Titusville PA (USA), partial (AMHER)STBURGH 13 NO 76 ONT transit, repaired, appears fine. (5¢ Registered Letter Stamp became mandatory October 1, 1876). Est. 300+.....
- 113 ☒ 27: **SIX CENT: DARK BROWN** (Plate 1), tied to 3¢ United States Postal Stationery envelope (not paying anything) by target with CAPE-COVE 27 JY 68 C.E. cds to New York (USA), QUEBEC 1 AU 68 L.C transit, back flap torn, slight soiling at edges still fine. Est. 350+.....



114



115

- 114 ☒ 27: **SIX CENT**: DARK BROWN, off-center, tied by **2-RING-7** to **ANCHOR LINE** illustrated advertising cover SAINT JOHN'S 12 MR 1873 N.B. to Mich- (**USA**), no receiver, part of corner mount adhered to inside at back, fine. Est. 300+.....
- 115 ☒ 27: **SIX CENT**: DARK BROWN (Plate 1), faulty pair, tied by MONTREAL PM 25 SP 71 C.E. duplexes paying TWO TIMES RATE to Chicago (**USA**), **REVERSED** CHICAGO 28 SEP ILL receiver on front and normal on reverse, slightly reduced at left, appears fine. Est. 200+.....



116

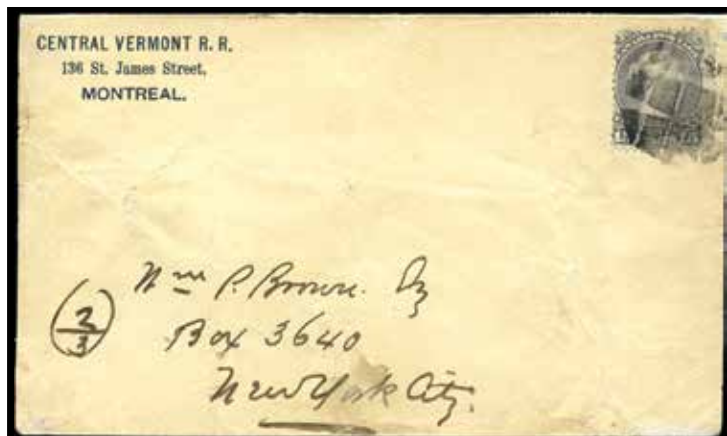


117

- 116 ☒ 27a: **SIX CENT**: YELLOW BROWN (Plate 2), tied to small cover by **2-RING-54** with TRURO 23 AU 1871 N.S. double split ring, to Rocky Hill Connecticut (**USA**), no receiver, green Vincent G Greene ownership on back. Est. 100+.....
- 117 ☒ 27a: **SIX CENT**: YELLOW BROWN, on cover with 35 Numeral and blue VICTORIA OCT 31 1871 B.C. oval, to Olympia Washington Territory (**USA**), no receiver, back flap missing. 2020 Greene Cert. Est. 500+.....



118



119

- 118 ☒ 29var,37a,39: **FIFTEEN CENT**: GREY PURPLE (Firth's IIB), plus **THREE CENT ROSE** and **SIX CENT YELLOW BROWN** Small Queens tied to **THREE COLOUR MIXED FRANKING** Registered EMBOSSED H.F. KALSE return cover by WINNIPEG 10 FE 14 cds cancels to Stamp Dealer on Nassau St, New York (**USA**), purple NEW YORK N.Y. REC'D (8) REG'Y 2.13 1914 and REG'Y DIVISION same date in black on reverse, colourful and very fine. Est. 350+.....
- 119 ☒ 30var: **FIFTEEN CENT**: SLATE VIOLET (Firth's XII), tied to cover by fancy cork, Montreal to New York City (**USA**), **QUINTUPLE RATE TO THE US**, New York receiver on reverse, cover creases and repaired, appears very fine. RARE. Est. 1000+.....

ESSAYS AND PROOFS



120

121

122

123

- 120 E **PROVINCE OF CANADA: BRADBURY, WILKINSON & CO., VICTORIA HEAD, ONE PENNY PLATE ESSAY, MAROON** on hard bond paper (0.004"), JUMBO margins extremely fine. (Minuse & Pratt E-Bb 1 Penny). Est. 500+.....
- 121 E **PROVINCE OF CANADA: BRADBURY, WILKINSON & CO., VICTORIA HEAD, ONE PENNY PLATE ESSAY, MAROON** on hard bond paper (0.004"), very fine. (Minuse & Pratt E-Bb 1 Penny). Est. 500+.....
- 122 E **PROVINCE OF CANADA: BRADBURY, WILKINSON & CO., VICTORIA HEAD, ONE PENNY PLATE ESSAY, GREYISH GREEN** on hard bond paper (0.004"), LR corner margin copy, light bends mostly in margin, still very fine. (Minuse & Pratt E-Bb 1 Penny). Est. 500+.....
- 123 E **PROVINCE OF CANADA: BRADBURY, WILKINSON & CO., VICTORIA HEAD, ONE PENNY PLATE ESSAY, BLUE** on hard bond paper (0.004"), very fine. (Minuse & Pratt E-Bb 1 Penny). Est. 500+.....



124

125

126

127

- 124 E **PROVINCE OF CANADA: BRADBURY, WILKINSON & CO., VICTORIA HEAD, ONE PENNY PLATE ESSAY, GREY BLUE** on hard bond paper (0.004"), very fine. (Minuse & Pratt E-Bb 1 Penny). Est. 500+.....
- 125 E **PROVINCE OF CANADA: BRADBURY, WILKINSON & CO., VICTORIA HEAD, ONE PENNY PLATE ESSAY, DARK BROWN** on hard bond paper (0.004"), very fine. (Minuse & Pratt E-Bb 1 Penny). Est. 500+.....
- 126 E **PROVINCE OF CANADA: BRADBURY, WILKINSON & CO., VICTORIA HEAD, ONE PENNY PLATE ESSAY, YELLOW BROWN** on hard bond paper (0.004"), very fine. (Minuse & Pratt E-Bb 1 Penny). Est. 500+.....
- 127 E **PROVINCE OF CANADA: BRADBURY, WILKINSON & CO., VICTORIA HEAD, ONE CENT PLATE PROOF, BLACK** on thick card, very fine. (Minuse & Pratt E-B. a 1 Cent). Est. 750+.....



128



129

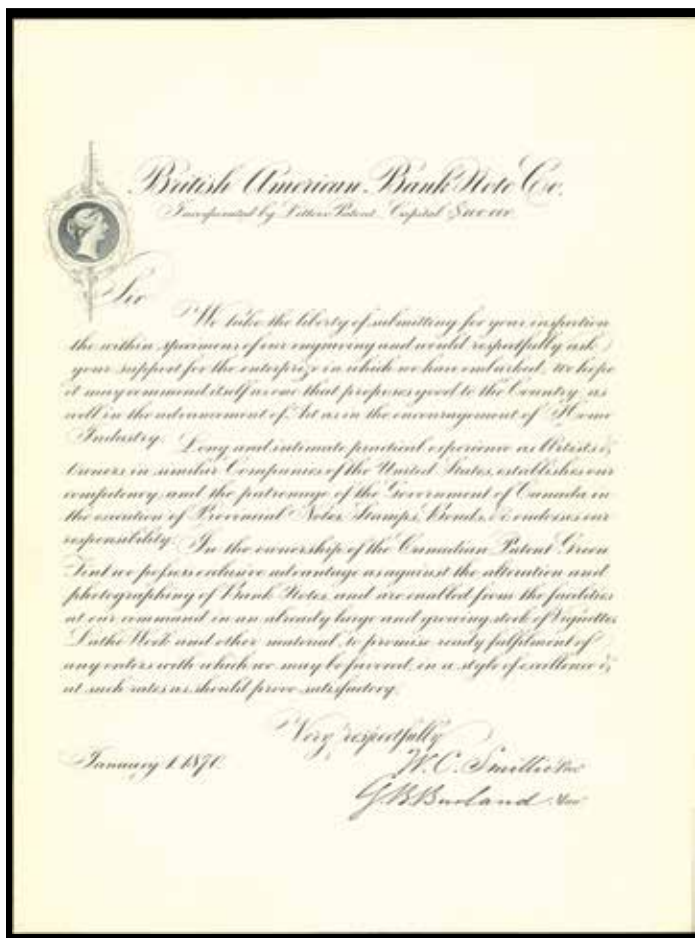


130

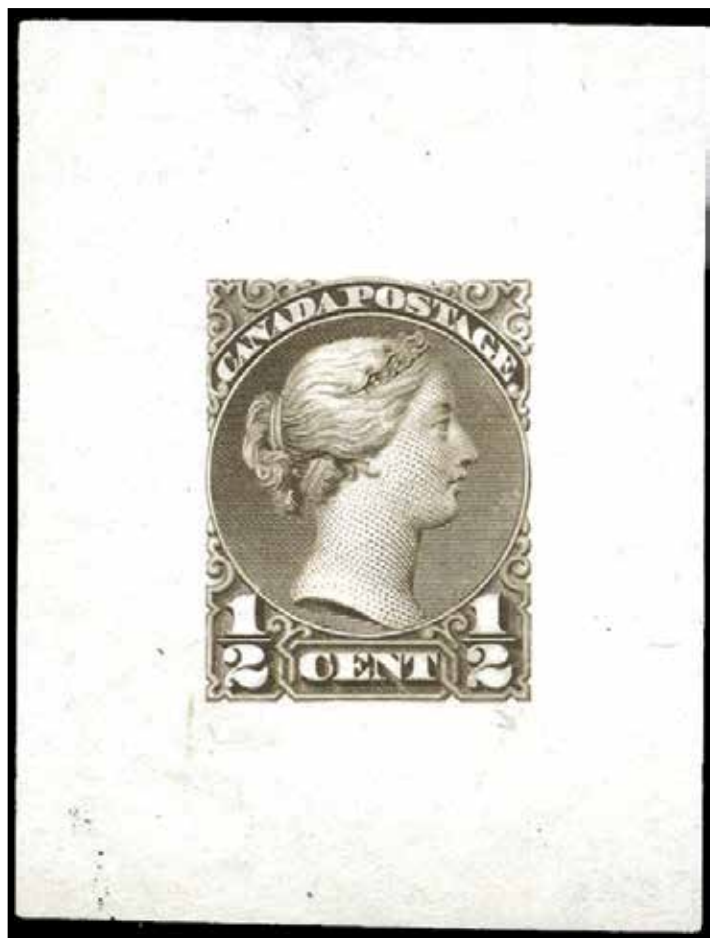
- 128 E **BRITISH AMERICAN BANK NOTE CO.: MASTER DIE ESSAY**, with two **CENTRAL PORTRAIT OVALS** of QUEEN VICTORIA (one facing left and the other right) printed on white wove paper and mounted on card (41x30mm), with manuscript notations '158', '227186' at top and '113' at bottom. **UNIQUE**. Est. 2500+.....
- 129 E **BRITISH AMERICAN BANK NOTE CO.: MASTER DIE ESSAY**, with **CENTRAL PORTRAIT OVALS** of QUEEN VICTORIA in two different sizes, bottom one showing Laurel wreath, printed on white wove paper and mounted on thin card (37x59mm), with manuscript notations '1204' and '1316' above each. **UNIQUE**. Est. 2500+.....
- 130 E **BRITISH AMERICAN BANK NOTE CO.: MASTER DIE ESSAY**, with **CENTRAL PORTRAIT OVAL** of QUEEN VICTORIA (27x32mm) showing Laurel wreath and (Die #) 101 scratched out and 103. printed, printed on white wove paper and mounted on thin card (45x37mm), with manuscript '1589' above. **UNIQUE**. Est. 1250+.....



- 131 DP **AMERICAN BANK NOTE CO.: BUST OF PEACE 3¢ EXPERIMENT DIE PROOF** on india (25x31mm) on card (229x153mm) in GREEN, rubber stamped "INDEX COPY" in green, very fine. Est. 2000+.....



132



133

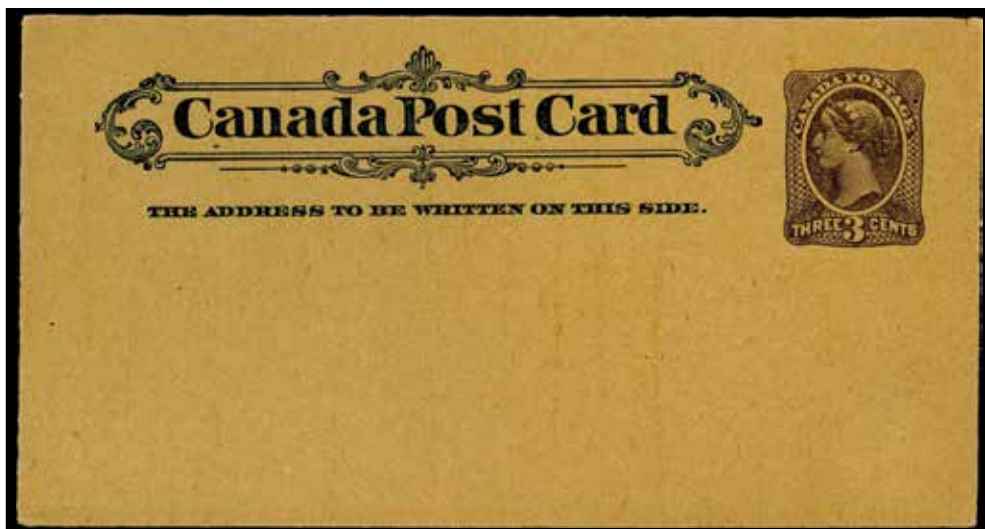
- 132 P **BRITISH AMERICAN BANK NOTE CO.:** Engraved Business Letter **PROOF** on card, showing Engraving of Queen's Head that was used for the Large Queens, very fine. (Illustrated H.E. & H.W. Duckworth "Large Queen Stamps of Canada 1868-1872" pg. 22.) Est. 500+
- 133 E **BRITISH AMERICAN BANK NOTE CO.:** 21E: **HALF CENT: ENGRAVED LARGE DIE ESSAY**, BROWN on india, diagonal and vertical crease, fresh and appears very fine. (Minuse & Pratt 21E-AB). Est. 3500+



- 134 E **BRITISH AMERICAN BANK NOTE CO.:** 25E: **THREE CENT: DIE ESSAY**, INDIGO on india, lettering, value tablet and emblem different than issued stamp, minute yellow hinge spots on back, still fresh and fine. (Minuse & Pratt 25E-Ba) One of three known. Ex. Leggett Est. 200+

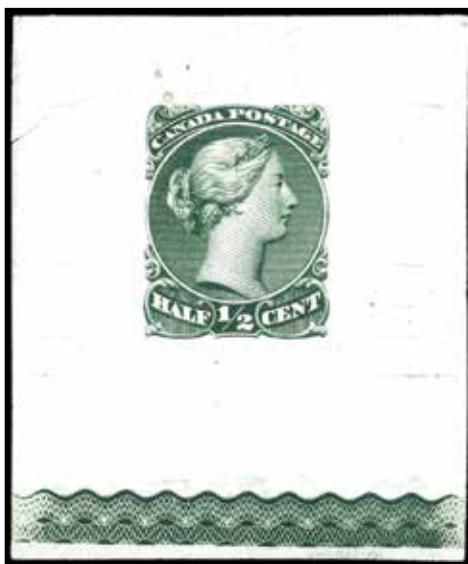


135



136

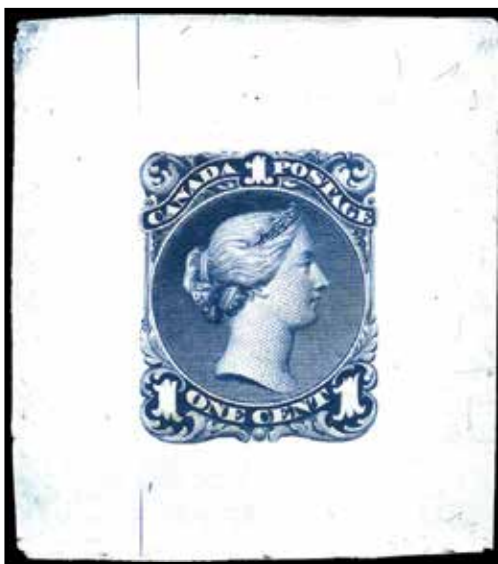
- 135 E **THE NATIONAL BANK NOTE CO. NEW YORK: LARGE TYPOGRAPHED DIE ESSAY**, the THREE CENT UNFINISHED DESIGN on **THIN GLAZE-SURFACED CREAM-COLOURED CARD** (55x68mm) and the printed portion (51x63mm) in **PALE ROSE PINK**, leaving a border around the edge to mimic die sinkage, a **RARE DIE ESSAY**, very fine. (Minuse and Pratt 25EA-Ad). Est. 1500+.....
- 136 E **THE NATIONAL BANK NOTE CO. NEW YORK: THREE CENT ESSAY PROOF**, POSTAL STATIONERY in the UNFINISHED DESIGN, extremely fine. **ONLY RECORDED EXAMPLE**. Ex. Harrison. Est. 750+.....



137



139



141

- 137 TC 21TC: **HALF CENT: LARGE TRIAL COLOUR DIE PROOF**, DARK GREEN on india, showing **5mm GEOMETRIC LATHEWORK** at bottom, cut and crease at UL, appears very fine. **RARE**. (Minuse & Pratt 21TC1). Ex. Leggett, Lum, Gordon. Est. 4000+.....
- 138 P 21ivP: **HALF CENT: PLATE PROOF**, BLACK on card, with **SPUR IN SCROLL** variety, minute thin at LL otherwise very fine..... 750
- 139 P 21P: **HALF CENT: PLATE PROOF**, BLACK on card, block of four, very fine. **RARE**. Ex. Leggett, Menich..... 3000
- 140 P 21iii,21ivP: **HALF CENT: PLATE PROOF**, BLACK on card, showing **CHIGNON** and **SPUR** varieties, very fine. Ex. Harrison. Est. 750+.....
- 141 DP 22DP: **ONE CENT: LARGE TRIAL COLOUR DIE PROOF**, intense DARK BLUE on india (41x46mm) showing a bit of the die sinkage at edges (few paper faults) plus the vertical scribe's guidelines at left and some engravers plate scratches and tool marks (from the unburnished die). Ex. Lindemann, Brigham. Est. 12500+.....
- 142 DP 22DP: **ONE CENT: DIE PROOF**, BROWN-RED on india on card, fine. Est. 1000+.....
- 143 TC 22TC: **ONE CENT: TRIAL COLOUR PLATE PROOF**, DEEP BLACK on india on card, very fine. Ex. Sir G Baillie. Est. 600+.....



138



140



142



143



144



145

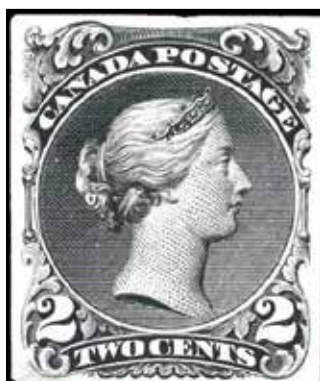


146

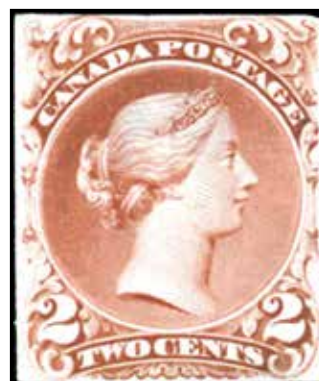


147

- | | | | |
|-----|----|--|-------|
| 144 | TC | 22TC: ONE CENT: TRIAL COLOUR PLATE PROOF , MEDIUM BROWN on india, fine. Ex. Sir G Baillie. Est. 750+..... | |
| 145 | TC | 22TC: ONE CENT: TRIAL COLOUR PLATE PROOF , OLIVE GREEN on india, fine. Ex. Sir G Baillie. Est. 750+..... | |
| 146 | P | 22P: ONE CENT: PLATE PROOF , BROWN RED on card, very fine..... | 750 |
| 147 | DP | 24DP: TWO CENT: LARGE DIE PROOF , BLACK on india (28x30mm), very fine. Only one other exists on card. Ex. Firth, Hussey, Lindsey, Brigham. Est. 10000+..... | |



148



149



150



151

- | | | | |
|-----|----|--|-------|
| 148 | DP | 24DP: TWO CENT: TRIAL COLOUR DIE PROOF , BLACK on india, small natural paper thins, appears very fine. (Minuse & Pratt 24TC2). 2014 Greene Cert. Est. 1000+..... | |
| 149 | TC | 24TC: TWO CENT: TRIAL COLOUR PLATE PROOF , DEEP RED BROWN on india, usual adhesive spots on back, fine and very RARE, possibly unique. Ex. Brigham. Est. 750+..... | |
| 150 | P | 24P: TWO CENT: PLATE PROOF , intense DEEP GREEN on card, large margins, negligible black offset and adhesive on back of card, still very fine and scarce. Ex. Brigham. Est. 750+..... | |
| 151 | P | 24P: TWO CENT: PLATE PROOF , GREEN on card, very fine..... | 750 |



152



153

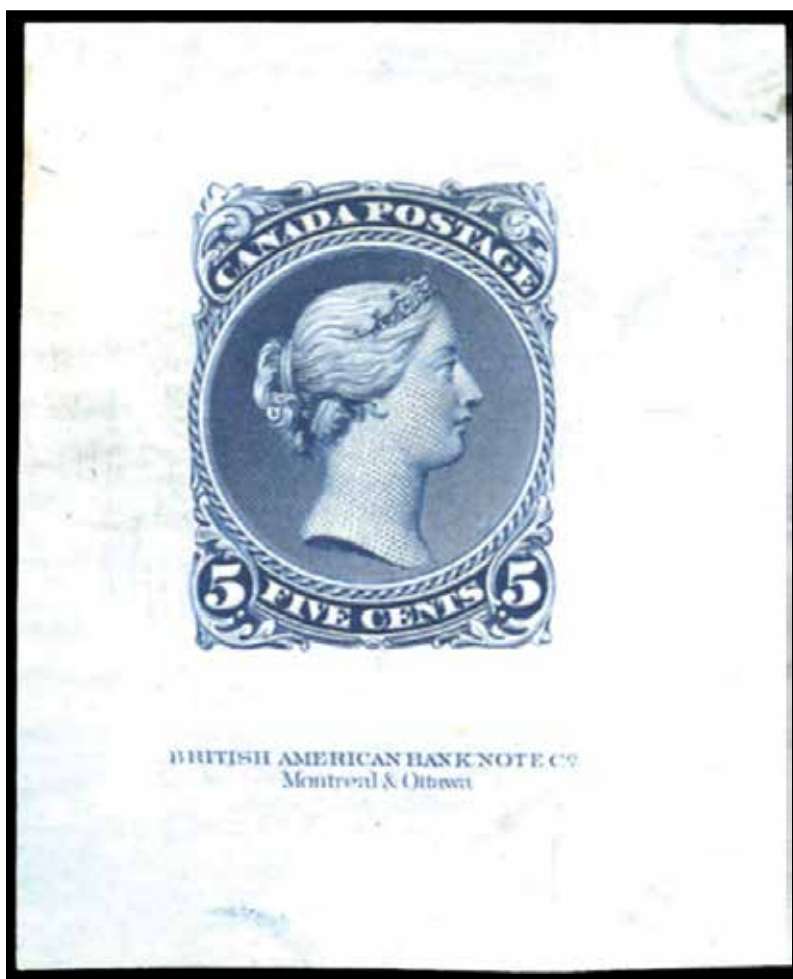


154



155

- 152 TC 25TC: **THREE CENT: TRIAL COLOUR PLATE PROOF**, PURPLE on india on card, small light wrinkling UR still fine. Est. 750+.....
- 153 TC 25TC: **THREE CENT: TRIAL COLOUR PLATE PROOF**, DEEP GREEN on orange-yellow glazed paper on thin card, small faults at top, VERY RARE and still very fine. Ex. Brigham. Est. 750+.....
- 154 P 25P: **THREE CENT: PLATE PROOF**, RED on card, very fine..... 750
- 155 DP 26DP: **FIVE CENT: DIE PROOF**, BLACK on india, torn at left, creased, and thinned, quite probably UNIQUE. (Minuse & Pratt 26TC2). Ex. Brigham. 2014 Greene Cert. Est. 5000+.....



156



157



158



159

- 156 TC 26TC: **FIVE CENT: LARGE TRIAL COLOUR DIE PROOF** (41x51mm), DARK BLUE showing full **BRITISH AMERICAN BANK NOTE Co. Montreal & Ottawa** two-line imprint, couple small thins LR, appears very fine. **UNIQUE**. Est. 15000+.....
- 157 TC 26TC: **FIVE CENT: TRIAL COLOUR PLATE PROOF**, AZURE BLUE on card, left margin copy, some light foxing still very fine. Ex. Sir G Baillie. Est. 750+.....
- 158 TC 26TC: **FIVE CENT: TRIAL COLOUR PLATE PROOF**, DEEP GREEN on card, very fine. Ex. Sir G Baillie. Est. 1000+.....
- 159 TC 26TC: **FIVE CENT: TRIAL COLOUR PLATE PROOF**, VERMILION on india, fine. Ex. Sir G Baillie. Est. 600+.....



160



163



161



162

| | | | |
|-----|----|--|-------|
| 160 | TC | 26TC: FIVE CENT: TRIAL COLOUR PLATE PROOF , DEEP NAVY BLUE on india, small foxing spot at top, still fine. Ex. Sir G Baillie. Est. 500+..... | |
| 161 | TC | 26TC: FIVE CENT: TRIAL COLOUR PLATE PROOF , AZURE BLUE on card, top margin block of four, light negligible water-stain on top pair does not show through, still very fine and SCARCE. Ex. Clark, Lindeman, Brigham. Est. 1500+..... | |
| 162 | P | 26P: FIVE CENT: PLATE PROOF , OLIVE GREEN on card, UL corner block of four, very fine..... | 3000 |
| 163 | P | 26P: FIVE CENT: PLATE PROOF , OLIVE GREEN on card, very fine. Ex. Brigham..... | 750 |



164



165



166

| | | | |
|-----|----|---|-------|
| 164 | DP | 27DP: SIX CENT: LARGE DIE PROOF (31x36mm), DEEP VENETIAN RED on india, natural paper fault LL, still fresh and very fine. Ex. Leggett, Lum. Est. 12500+..... | |
| 165 | DP | 27DP: SIX CENT: SMALL DIE PROOF , BLACK on india on card, value tablets and denominations removed. (Minuse & Pratt E27TC2). 2020 Greene Cert. Est. 500+..... | |
| 166 | P | 27P: SIX CENT: PLATE PROOF , BROWN on card, very fine..... | 750 |



167



168



169

- | | | | |
|-----|----|---|-------|
| 167 | DP | 28DP: TWELVE AND A HALF CENT: LARGE DIE PROOF , DEEP GREEN on india (41x51mm) on card (65x79mm) with FULL DIE SINKAGE , very fine. Est. 12500+..... | |
| 168 | P | 28P: TWELVE AND A HALF CENT: PLATE PROOF , BLUE pair on card, very fine. Est. 1500+..... | |
| 169 | P | 28P: TWELVE AND A HALF CENT: PLATE PROOF , BLUE on card, very fine. Ex. Brigham..... | 750 |



170



171



172

- | | | | |
|-----|----|---|-------|
| 170 | E | TWELVE AND A HALF CENT: ENGRAVED LARGE DIE ESSAY , DARK BLUE on india, for Small Queen issue, crease UL, light foxing on back and thin, still fresh and very fine. (Minuse & Pratt E-1a 12 1/2 Cents). Est. 3000+..... | |
| 171 | DP | 29DP: FIFTEEN CENT: LARGE DIE PROOF , BLACK on india (30x35mm), showing TWO EXTRA ORNAMENTS in upper corners, with natural paper fold appearing like a 6mm plate scratch, fresh and very fine. Ex. Leggett, Menich. Est. 4000+..... | |
| 172 | DP | 29DP: FIFTEEN CENT: LARGE DIE PROOF , BLACK on india (32x39mm), a few very light and completely immaterial age spots mostly on back in margin only, very fine. One of only two known. Ex. Denton, Lindeman, Brigham. Est. 7500+..... | |



173



174



175



176

- 173 DP 29DP: **FIFTEEN CENT: LARGE TRIAL COLOUR DIE PROOF**, GREEN on india (31x35mm), a couple very light age spots mostly on back, very fine. Ex. Firth, Lum, Leggett. Est. 12500+.....
- 174 DP 29DP: **FIFTEEN CENT: TRIAL COLOUR DIE PROOF**, GREEN on glazed wove paper, small scuff on cheek appears very fine. (Minuse & Pratt 29TC5). 2014 Greene Cert. Est. 5000+.....
- 175 DP 29DP: **FIFTEEN CENT: TRIAL COLOUR DIE PROOF**, BROWNISH-RED on card, from TRADE SAMPLE SHEET, very fine. (Minuse & Pratt 29TC9). Est. 2500+.....
- 176 DP 29DP: **FIFTEEN CENT: TRIAL COLOUR DIE PROOF**, BROWNISH-RED on card, large right margin from TRADE SAMPLE SHEET, very fine. (Minuse & Pratt 29TC9). Est. 2500+.....



177



180



183



178



179



181



182

- 177 DP 29DP: **FIFTEEN CENT: TRIAL COLOUR DIE PROOF**, DEEP BLUE on card, from TRADE SAMPLE SHEET, very fine. Est. 2500+.....
- 178 TC 29TC: **FIFTEEN CENT: TRIAL COLOUR PLATE PROOF**, PLUM on card, with guide dots at left and dot below 5 of 15 at right, scratch at LL, appears very fine. (Minuse & Pratt 29TC4). 2002 Greene Cert. Est. 500+.....
- 179 TC 29TC: **FIFTEEN CENT: TRIAL COLOUR PLATE PROOF**, PLUM on card, very fine. (Minuse & Pratt 29TC4) Est. 500+.....
- 180 P 29P: **FIFTEEN CENT: PLATE PROOF**, BROWN PURPLE on card, very fine. Ex. Wellburn..... 1000
- 181 P 29P: **FIFTEEN CENT: PLATE PROOF**, BROWN PURPLE **BLOCK OF FOUR** on card, one of only two blocks still in existence and an extremely fine **SHOWPIECE**. Ex. V. G. Greene, Brigham..... 4000
- 182 S 29s: **FIFTEEN CENT: GREY PURPLE** (Firth XIII), with sans serif **SPECIMEN** overprint, large part og, fine. Est. 300+.....
- 183 E **FIFTEEN CENT: ENGRAVED LARGE DIE ESSAY**, BLACK on india, size of Small Queen issue, crease UL, foxing at bottom still fresh and very fine. (Minuse & Pratt E-1a 15 Cents). Est. 3000+.....
- 184 O 21-28,30,etc: $\frac{1}{2}\phi$ to 15 ϕ , all in **STRIPS OF THREE**, various cancels, with SPUR variety, 2-RING, cds, Fancy Star, London 6 and Peterboro duplex, St John oval, and pen, f-vf. Est. 500+.....



HALF CENT



- 185 ★○ 21vars: BLACK, seven different mint and used, medium Ottawa with og, thick perf 11½x12, Montreal, thin crisp perf 12, and horizontal wove perf 11½x12 all unused, **SPUR** variety, **CHIGNON** variety, and thin paper used with Owen Sound Crossroads cork (D&S 213), f-vf. Est. 250+.....



- 186 ○ 21: BLACK, used strip of six, early printing showing alternating wide and narrow spacing in perforations, 21-18-21-18-21-18mm, TORONTO AU 69 cds cancels, fine. Ex. Harrison. Est. 200+.....



- 187 ★○ 21a,21c,21iv,21v,21ix,etc: BLACK, nine varieties with perf 11½x12, **SPUR**, **THIN CRISP PAPER**, three **H SPURs** two unused one used, **RE-ENTRY UL** (pos 1, pos 11), blurry print appearing to be a **RE-ENTRY**. Ex Harrison. Est. 300+.....
- 188 ○ 21b: BLACK, with fragment of **WATERMARK**, centered to top, fine. **RARE**. 1988 Greene Cert..... 15000
- 189 ○ 21c: BLACK, **THIN PAPER**, left margin copy with partial (B)**RITISH AMERICA BANK NO(TE) IMPRINT**, used, couple shorter perfs at top, striking. Est. 150+.....



188



189



190



192

- 190 ★ 21,21ii,21v,21iv: BLACK, mint block of 15, (pos1-5,11-15,21-25), with **ENGRAVER'S SLIP** (pos 2), **SPUR** variety (pos 1-3,11-14,22-24), **H SPUR** variety (pos 4), full og, hh at top, fine. Ex. Leggett, Menich..... 3150
- 191 ★ 21,21ii,21v,21iv: GREY BLACK, (re-entered state) mint top margin strip of eight (pos1-8), showing **HALF CENT** of **COUNTER** and **BRITISH AMERICAN BANK NOTE CO. MONTREAL & OTTAWA** Type IV **IMPRINT**, with **RE-ENTRY** (pos 1), **ENGRAVER'S SLIP** (pos 2), **SPUR** varieties (pos 1-3), **H SPUR** variety (pos 4), full og, heavily supported, fine. Ex. Harrison, Wellburn. Est. 1250+.....
- 192 ★○ 21ii,21iv: BLACK showing **LINE ABOVE P** and **TRANSFER FLAW** LL spandrel, in mint block of four (pos 12-13,22,23), unused (pos 2,42,52,72) and used (pos 32,62) with **SOFT WHITE**, **THIN CRISP**, horizontal and vertical wove papers and perfs, six including block with **SPUR** varieties, f-vf. Ex. Harrison. Est. 250+.....



191



193



194

- 193 (★) 21ciii: BLACK, **THIN PAPER**, with **CHIGNON** variety, unused **JUMBO** showing parts of stamps at top and right, just into at bottom, striking. Est. 100+.....
- 194 ★ 21iv: BLACK, top margin copy showing full **CENT** of **IMPRINT** and **SPUR IN SCROLL** variety, og, supported, fresh and fine. Est. 350+.....

ONE CENT



195 ★ 22: BROWN RED, mint block of four, og, feather tear LL, few short perfs, fresh and almost very fine..... 3200



196 ○ 22,22b: four used shades, with RED BROWN, RED BROWN on thin paper, BROWN RED on thin paper, and ORANGE RED, fault free f-vf. 560



197



198



199



200

197 ○ 22: BROWN RED, medium paper, used, Quebec 37 Numeral cancel (D&S 74), LR corner perf creased, appears very fine. Est. 100+... ..

198 ○ 22a: BROWN RED, used, 12 FE 1869 cds, with partial . **B** and **TH** of **WATERMARK**, missing perf at bottom, UL and LR corner perf creases, appears fine..... 300

199 ○ 22ii: BROWN RED on unwatermarked **BOTHWELL PAPER**, used 26 DE 68 C.W. cds, nibbed perf at bottom, fine..... 100

200 ○ 22ii: BROWN RED on unwatermarked **BOTHWELL PAPER**, used, TORONTO 20 JA 69 C.W. cds, fine..... 100



- 201 ○ 23,vars: Ten used and three covers with various shades DEEP ORANGE, YELLOW ORANGE, etc, including a strip of three, various cancels with 2-RING-3, 2-RING-5, Fancy Toronto 2 (D&S 27), cds, etc, mostly f-vf. Est. 500+.....

TWO CENT



- 202 ★ 24: GREEN, fourteen copies, including unused EMERALD GREEN (faulty) and BLUE GREEN, used block of four with pen cancel, DEEP GREEN, YELLOW-GREEN, THIN paper and BOTHWELL paper, and two JUMBO margins, appears mostly f-vf. Est. 400+.....



- 203 ○ 24: GREEN, tied by MONTREAL 16 OC 68 C.E. cds to part of green cover addressed to Col. George Dennison Toronto, improper usage of 2¢ Soldiers rate, stamp repaired UL otherwise very fine. Est. 150+.....



- 204 ○ 24var: DEEP GREEN, strip of three, (pos 92-93), Paper 7, cancelled with **2-RING-6** showing **VERTICAL GUIDELINES** moving from left to right, some toning on back, fresh and centered. Est. 150+.....



- 205 ○ 24: **TWO CENT**: GREEN, five copies with FANCY cancels, including D&S 149A, 810, 812 (faulty) and 853, otherwise f-vf. Est. 150+....



206



207



208

- 206 F 24: GREEN, **SPIRO LITHOGRAPHED FORGERY**, small tear at bottom and large paper adhesion, still RARE. Est. 150+.....
- 207 ○ 24a: GREEN, with full LL of **WATERMARK**, used, LL corner perf crease otherwise fine..... 250
- 208 ○ 24v: GREEN, with **MAJOR RE-ENTRY**, used, light diagonal crease, back stamped and black mark UR corner perf..... 375

THREE CENT



- 209 ○ 25: RED, seventeen used with various cancels including Fancy Toronto 2, 4-line Revenue usage, Blue target, Money Letter, Fancy Corks, and strip of six with pen cancels. Est. 400+.....



- 210 ○ 25: Twenty-one used in various shades and papers, with ORANGE-RED, DULL RED, RED, BRIGHT RED, VENETIAN RED, ROSE-RED, PALE ROSE, THIN PAPER, **BOTHWELL PAPER** in strip of three, etc, couple perf faults, appears f-vf. Est. 200+.....



211



212



213



214



215



216

- 211 ○ 25var: RED, with full **DOUBLE PERFORATION** across bottom, cancelled with two **2-RING-3**, perfs into at top, a couple shorter perfs. Est. 100+.....
- 212 ○ 25var: RED, with **EXTRA VERTICAL PERFORATION** partial down middle, cancelled with two **2-RING-54**, perfs into at bottom, a few shorter at top. Est. 150+.....
- 213 ○ 25: RED, with fraudulent QUEBEC A 1 AP 68 C.E cds, (First Day Cancel), still attractive. 2020 (Pink) Greene Cert. Est. 100+.....
- 214 ○ 25a: RED, with partial **WE** and **ILL** of **WATERMARK INVERTED**, small repair at bottom, slight faded and light all over toning, appears fine. 250
- 215 ○ 25iv: RED, with **GOATEE** variety, faulty, used, perfs into at right, appears vg. 500
- 216 ○ 25vii: RED, with **SHAVING NICK** variety, used **2-RING-3**, perfs just clear at bottom, fine. 900



- 217 ○ **FIVE CENT**: 26vars: Ten used with OLIVE GREEN, DEEP OLIVE GREEN, perf 11½x12 and perf 11¾x12, various cancels including Blue target and **FANCY CORK BUTTERFLY**, couple with minor perf faults, appears f-vf. 1310



- 218 ○ **SIX CENT**: 27,vars: Sixteen used showing range of shades with DARK BROWN, YELLOW BROWN, **MAJOR RE-ENTRY** (pos 95) showing part of imprint (faulty), etc, fancy cancels, cds, Plates, etc, some minor mostly perf faults appears fine. Est. 500+.....

TWELVE AND A HALF CENT



- 219 ○ 28vars: Five used including DEEP DULL BLUE with Crown cancel, MILKY BLUE full og with small thin, PALE DULL BLUE **JUMBO** with cork cancel and DEEP BLUE with SON QUEBEC 30 MY 68 C.E cds and BLUE with targets with gripper marks, mostly f-vf. Est. 250+.....



220



221



222

- 220 ○ 28a: BLUE, showing **LS** of **WATERMARK**, used, very fine..... 600
- 221 ★ 28i: DULL BLUE, left side mint block of four, perfs into at right, full og, small stain LL stamp, fresh, small hr UL, almost fine..... 2000
- 222 ○ 28i: MILKY BLUE, used block of four with fancy cork **FLOWER POT** cancels, supported with large trace of og, perfs just clear at bottom. Est. 100+.....



223



224

- 223 ○ 28var,28ii,etc: BLUE, eight used copies with various varieties, **MISSING FRAMELINE AT LEFT** (pos 67) thin and toned, **MISSING FRAMELINE AT RIGHT**, **DOT IN RIGHT '1' OF '12'**, **FLAW UNDER 'PO'** (pos 52) creased, **FLAW IN 'A' OF 'HALF'**, **CRACKED PLATE**, **RE-ENTRY 'C' and 'N'** creased, **BROKEN LETTERS 'C' and 'A'** creased, appear f-vf. Est. 350+.....
- 224 ○ 28iv: BLUE, with **BALLOON FLAW**, used, couple nibbed or short perfs and small ink mark on reverse, fresh and fine..... 500

FIFTEEN CENT



- 225 ★○ 29,30,vars: Fourteen of Firth's groupings assembled by Mr. Fawn, six with og (II, III, VII, X, XI (STUDD'S BLUE), XIV), three unused (I, VIII (Thick paper), IX) and five used (IV, V, VI, XII, XIII) all clean and mostly fault free. (Firth's II, III and VII appear to be later printings). Still nice assembly of shades. Est. 1500+.....
- 226 ★○ 29,29a,30,30a,vars: Firth's I to XIV shades, ten mint including singles 30b with Greene Cert (creased), pair and block of six with full og, plus twenty-seven used, including **BOTHWELL PAPER**, three strips of five, perf 11½x12, **PAWN BROKER**, etc, some faults, appears mostly f-vf. Est. 750+.....Photo Online



- 227 ○ 29vars,30vars: Ten shades, Firth's so called "**PROBLEM CHILDREN**" or colour changelings, used, neatly annotated, some perf faults, one appears unused. Ex Siverts. Est. 500+.....



228



229



230

- 228 ○ 29,30: Seven copies with various **PRE-CANCELS**, including Toronto type T **TRIPLE VERTICAL** with **CRACKED PLATE**, Type J in pair, etc, some faults, appear mostly f-vf. Est. 250+.....
- 229 ★ 29a,29i,30i: Three shades all with **PRE-PRINTING PAPER CREASES**, mint GREYISH PURPLE (Firth's XIII) with large part of **BRITISH AMERICAN BANK N(OTE)** imprint in selvage, full og, perf 11½x12, used MUDDY BROWNISH PURPLE (Firth's VA) and mint SLATE GREY (Firth's XA), og, hr, latter with missing perf, f-vf. Est. 400+.....
- 230 ★ 29var: GREYISH PURPLE (Firth's XIII) left margin block of nine (pos 51-53,61-63,71-73) with **PRE-PRINTING PAPER CREASES**, mint, with large part of **BRITISH AMERICAN BANK NO(TE)** imprint in selvage, full og, disturbed og, toned and slightly faded at bottom three, appears fine. Est. 100+.....



231



232

- 231 ★ 29: SLATE VIOLET (Firth's XII), left margin mint block of eight, full og, hrs, toning at couple top perfs, fine..... 640
- 232 ★ 29: SLATE VIOLET (Firth's XII), mint top margin pair showing (BR)ITISH AMERICAN BANK NOTE CO. MONTREAL & OTTA(WA) of imprint, og, very fine. Est. 150+.....



- 233 ○ 29b: DULL PURPLE (Firth's I) used with HAMILT(ON) PM 13 MR 68 C.W cds, tear at left and thin on right. "One of the earliest RECORDED dates - 20 days before date of issue. 2014 Greene Cert. Est. 750+.....



- 234 ○ 29c,vars: Eleven used copies in various shades showing almost complete **E. & G. BOTHWELL CLUTHA MILLS**, some with small or minor faults, appears f-vf. (Last one erroneously marked as **LS** but actually **E**.)..... 8250



235



236



238



237



239



240

- 235 ★ 29d: **BROWN PURPLE, IMPERFORATE BOTTOM IMPRINT BLOCK OF FOUR** (Firth's XIII A), full original yellowish gum, folded vertically between, fresh, almost very fine..... 1600+
- 236 ★ 29d: **BROWN PURPLE, IMPERFORATE TOP MARGIN IMPRINT PAIR** (Firth's XIII A), full original yellowish gum, lh, folded vertically between, fresh, very fine..... 1600+
- 237 ★ 29d: **BROWN PURPLE, IMPERFORATE RIGHT MARGIN BLOCK OF FOUR** (Firth's XIII A), full original yellowish gum, hr, gum wrinkles, couple light thins in bottom pair, appears fresh and very fine..... 2400+
- 238 ★ 29d: **BROWN PURPLE, IMPERFORATE PAIR** (Firth's XIII A), full original yellowish gum, fresh and very fine..... 1600+
- 239 ★ 29d: **BROWN PURPLE, UPPER LEFT MARGIN IMPERFORATE BLOCK OF FOUR** (Firth's XIII A), **RE-TOUCH** and minor **RE-ENTRY** above **POS** of 'POSTAGE' (pos 1), og, hr, stain in top selvage, light creases in UL selvage still fresh and otherwise very fine. 3200+
- 240 ★ 29d: **BROWN PURPLE, IMPERFORATE VERTICAL PAIR** (Firth's XIII A), full original yellowish gum, top stamp lightly hinged, bottom one never hinged, very fine. (From block of eight when combined with next lot). Ex. Lindeman, Brigham..... 1500+



241



242

- 241 ★ 29d: **BROWN PURPLE, IMPERFORATE BLOCK OF SIX** (Firth's XIII A), full original yellowish gum with lighter than normal natural gum wrinkles, top stamps hinged, bottom ones never hinged, very fine. (From block of eight when combined with previous lot). Ex. Lindeman, Brigham..... 6400+
- 242 (★) 29i: **GREY PURPLE** (Firth's XIII), **UR** margin block of four (pos 9-10, 19-20), **MIS-PERFORATED** so perforation removes Pawnbroker variety, unused supported. Est. 150+.....



243

244

245

249

- 243 ○ 29i: GREY PURPLE (Firth's XIII), used **DRAMATIC MIS-PERF** showing part of stamp at right. Est. 100+.....
- 244 ○ 29e,iii: REDDISH PURPLE **THIN PAPER** (Firth's I), with **MAJOR RE-ENTRY**, used, short perfs and creased UL, appears fine. 1989 RPS Cert..... 1250
- 245 ★ 29vi: DEEP VIOLET GREY (Firth's XII), showing **PLATE CRACK** (pos 91), somewhat disturbed og and natural missing gum at bottom, minute thin, appears fine..... 900



248



246



250

- 246 ★ 29i,29vii: GREY PURPLE (Firth's XIII), top **JUMBO MARGIN IMPRINT PAIR** showing (BRI)TISH AMERICAN BANK NOTE CO. MONTREAL & OTTAW(A) of imprint, full og, light creases, left stamp nh, right with thin, otherwise fine..... 1500
- 247 ★ 30: SLATE VIOLET (Firth's XII), **COMPLETE SHEET OF 100**, with full inscriptions, showing varieties **PLATE SCRATCH** (pos 9), **PAWN BROKER** (pos 10), **SCRATCH** (pos 15-16), **DOT IN F OF 'FIFTEEN'** (pos 51), **PLATE CRACKS** (pos 64, 65, 81, 83, 91), **PITTED PLATE** (pos 94), **BALLOON FLAW** (pos 97), etc, missing piece of selvage at bottom, some separating, large part stuck to page, og, hr's. **UNIQUE**. Ex. Redford, Smart, Firth, Leggett. **THE ONLY RECORDED COMPLETE SHEET OF ANY LARGE QUEEN DENOMINATION**. Est. 15000+.....
- 248 ★★ 30b: DEEP GREYISH BLUE (Firth's XI), og, block of four, bottom pair nh, fresh and almost very fine. 2020 Greene Cert..... 900
- 249 ★ 30b: BLuish GREY (Firth's XB), left margin copy showing **BRITISH AMERICAN BANK NO** of imprint, og, fresh and fine. Est. 100+.....
- 250 ○ 30b: BLuish GREY (Firth's XB), two used with **W.J.G. PERFIN**, one reversed, fine. Est. 200+.....





251



252

- 251 ○ 30b,37,F1: BLUE GREY **BLOCK OF NINETEEN** with **PAWNBROKER** variety (pos 10), plus **THREE CENT** Small Queen and **TWO CENT** Registered Letter Stamp (faulty) **MIXED FRANKING** all tied to large folded piece, creases and tears mostly in top row, and patch of another stamp added to pos 17, variety fault free. (The largest recorded used block with this variety). 2021 Greene Cert (Pink due to repair) with Technical Report. Est. 1000+.....
- 252 ○ 30b: BLuish GREY (Firth's XB), 31 copies, all in horizontal strips and stuck, some overlapping, with **OTTAWA CROWN** cancels, LR two stamps with Ottawa JY 88 duplex, creased and perf faults, affixed to backing paper. (This was erroneously stated to be a block of 31 when illustrated in Maple Leaves June 1960 No. 66, pg. 103). **THE LARGEST KNOWN MULTIPLE**. Ex. Godden, Wellburn, Leggett. Est. 2500+.....



253 ○ 30b: DEEPER BLuish GREY (Firth's XB), used strip of four, small feather tear left stamp, still very fine. Est. 250+.....



254



255



256



257

- 254 ★ 30bix: DEEP GREYISH BLUE (Firth's XB), mint, with **JUMBO MARGIN IMPRINT COPY** at bottom showing **TE CO. MONTREAL & OTTAWA** of imprint, full og, crease LL, appears very fine. Est. 150+.....
- 255 ○ 30bix: BLuish GREY (Firth's XA), used, with **JUMBO MARGIN IMPRINT COPY** at top, showing **TE CO. MONTREAL & OTTAWA** of imprint, very fine..... 300
- 256 ○ 30bix: DEEPER BLuish GREY (Firth's XA), used, with **JUMBO MARGIN IMPRINT COPY** at bottom showing **TE CO. MONTREAL & OTTAWA** of imprint, creased, appears very fine. 1983 Greene Cert. Est. 100+.....
- 257 ○ 30c: DEEP VIOLET (Firth's VIIIA), **VERY THICK PAPER**, used with **JUMBO LEFT MARGIN**, internal tear and thin, striking..... 450



258



259



260

- 258 ○ 30c: DEEP VIOLET (Firth's VIIIA), **VERY THICK PAPER**, used with duplex cancel, shallow thins, appears very fine..... 1000
- 259 ○ 30d: GREENISH GREY (Firth's VI), perf 11½x12, used, showing **&** and partial **S** of the Alexr. Pirie & Sons **SCRIPT WATERMARK**, fine. (Illustrated Boggs Vol 1 pg. 245) 1992 Greene Cert..... 4000
- 260 ○ 30d: GREENISH GREY (Firth's VI), perf 11½x12, used, colour changeling somewhat altered from original, showing strong **AI** and partial **e** of the Alexr. Pirie & Sons **SCRIPT WATERMARK**, small tears LL, appears fine. 1991 PF Cert..... 2000



261



262



265



266



263



264



267

| | | | |
|-----|-----|--|-------|
| 261 | ○ | 30e: DEEP BLUE (Firth's XI STUDD'S BLUE), used, lovely rich colour, two small thins appears very fine. Ex. Siverts. 2020 Greene Cert. | 600 |
| 262 | S | 30iS: SLATE GREY (Firth's XB), with VIOLET sans serif SPECIMEN overprint, large part og, fine. Est. 400+..... | |
| 263 | ★ | 30i: SLATE VIOLET (Firth's XII), mint block of ten, full og, small hrs at top, five nh, couple wrinkles, fresh and fine..... | 1800 |
| 264 | (★) | 30i: SLATE PURPLE (Firth's XIII), unused block of four, JUMBO bottom margin, fresh and fine. Est. 100+..... | |
| 265 | ○ | 30i: SLATE GREY (Firth's XA), used, horizontal grain, clear at bottom to JUMBO top margin, corner creases and short perfs at top, appears very fine. Est. 150+..... | |
| 266 | ○ | 30i: SLATE VIOLET (Firth's XII), used, just into at top to JUMBO bottom margin, light crease, fine. Est. 150+..... | |
| 267 | ★ | 30,30iii,30viii: GREY (Firth's XII), mint full og, UR corner margin block of four, showing PLATE SCRATCH (pos 9) on top and PAWNBROKER variety (pos 10), creased in selvage only, stamps lh, fine..... | 3460 |



268



270



269

- | | | | |
|-----|---|---|------|
| 268 | ★ | 30i,30iii: SLATE VIOLET (Firth's XII), mint og, PAWNBROKER variety (pos 10), perfs just into at bottom, natural gum skip at right, hr, fine. | 740 |
| 269 | ★ | 30i,30iii: SLATE VIOLET (Firth's XII), mint og, UR block of ten showing (AMERICAN BANK NOTE CO. MONTREAL & OTTAWA imprint and PAWNBROKER variety (pos 10), perfs just into at bottom, bottom row nh, fine..... | 1400 |
| 270 | ○ | 30i,30iii: SLATE VIOLET (Firth's XII), used pair, showing PLATE SCRATCH (pos 9) on top and PAWNBROKER variety (pos 10), perfs just into at bottom, fine..... | 360 |



271



272

- | | | | |
|-----|----|--|-------|
| 271 | ★ | 30v: BLUISH GREY (Firth's XB), mint block of four showing CRACKED PLATE UR (pos 65), full og, PRE-PRINTING PAPER CREASE through right stamps, and pencil notations LL, otherwise centered and very fine..... | 2040 |
| 272 | ★○ | 30var: COLOUR CHANGELINGS, perf 12, specialized lot of ten, showing of one mint og and nine used in various shades, mint fine, couple perf faults on used appear f-vf. Est. 500+..... | |



273



274

- 273 ★ 30bvi: BLUISH GREY (Firth's XB), mint block of four, (pos 86-87,96-97) with **BALLOON FLAW** variety LR stamp and **CRACKED "1"** variety UR stamp, fresh, og, small hr, perfs just into at left appears fine..... 2250
- 274 ★ 30,30vi: SLATE VIOLET (Firth's XII), bottom margin block of six with (BRI)TISH AMERICAN BANK NOTE CO. MONTREAL & OTTAWA imprint and showing **BALLOON FLAW** (pos 97), four including variety nh, fine..... 3920



- 275 ○ 30bvrs,30vi: DEEP GREYISH BLUE (Firth's XI), **USED BLOCK OF TWENTY-FIVE** (pos 71-77, 81-89, 91-99) showing **PLATE CRACK** (pos 91), **BALLOON FLAW** (pos 97), and trace of IMPRINT on three, a few internal creases, supported. Est. 500+.....



276



277



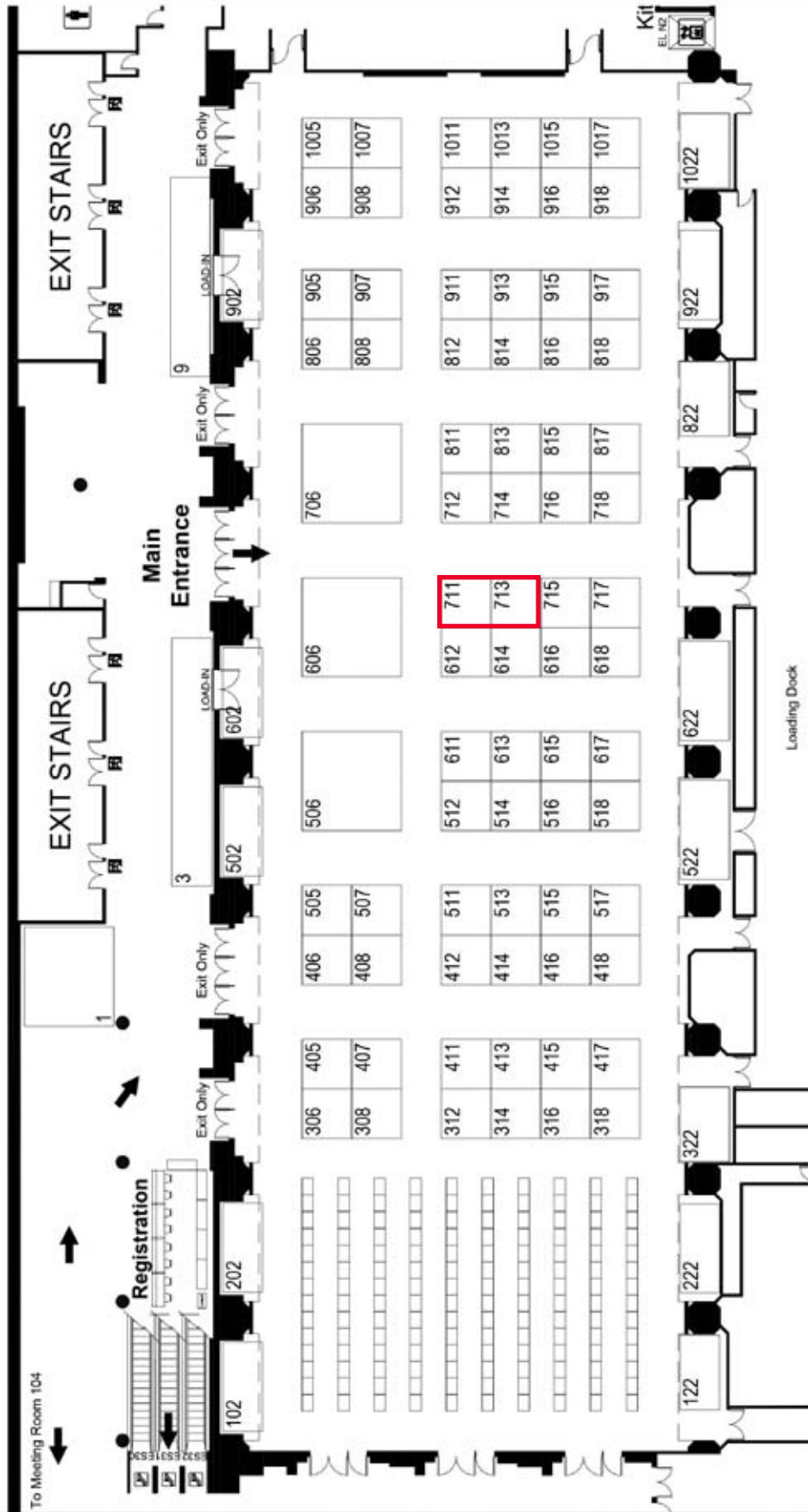
278

- 276 ○ 31: **ONE CENT ON LAID PAPER**: BROWN RED, used, partially rebacked, appears fine..... 2500
- 277 ○ 32F: **TWO CENT ON VERTICAL LAID PAPER**: **SPIRO LITHOGRAPHED FORGERY**, repaired at UR, appears very fine. Est. 150+... ..
- 278 ○ 33: **THREE CENT ON LAID PAPER**: RED, with verge line, used with partial BEACH cds, small tear UL, appears fine..... 500



CAPEX 22 - International One Frame Stamp Championship Exhibition

June 9-12, 2022
Metro Toronto Convention Centre, North Building
Constitution Hall - 105-106-107



CAPEX 22 - International One Frame Stamp Championship Exhibition
June 9-12, 2022
Metro Toronto Convention Centre, North Building
Constitution Hall - 105-106-107

Confidential Property Of
Global Experience Specialists
File: Capex22 Mar 30 21.dwg
Layout: Guide
Plotted: March 30, 2021, 10:33:34 AM
By: Priblak, Narema

Come visit us at Booths 711 & 713 to arrange viewing prior to the sale.

