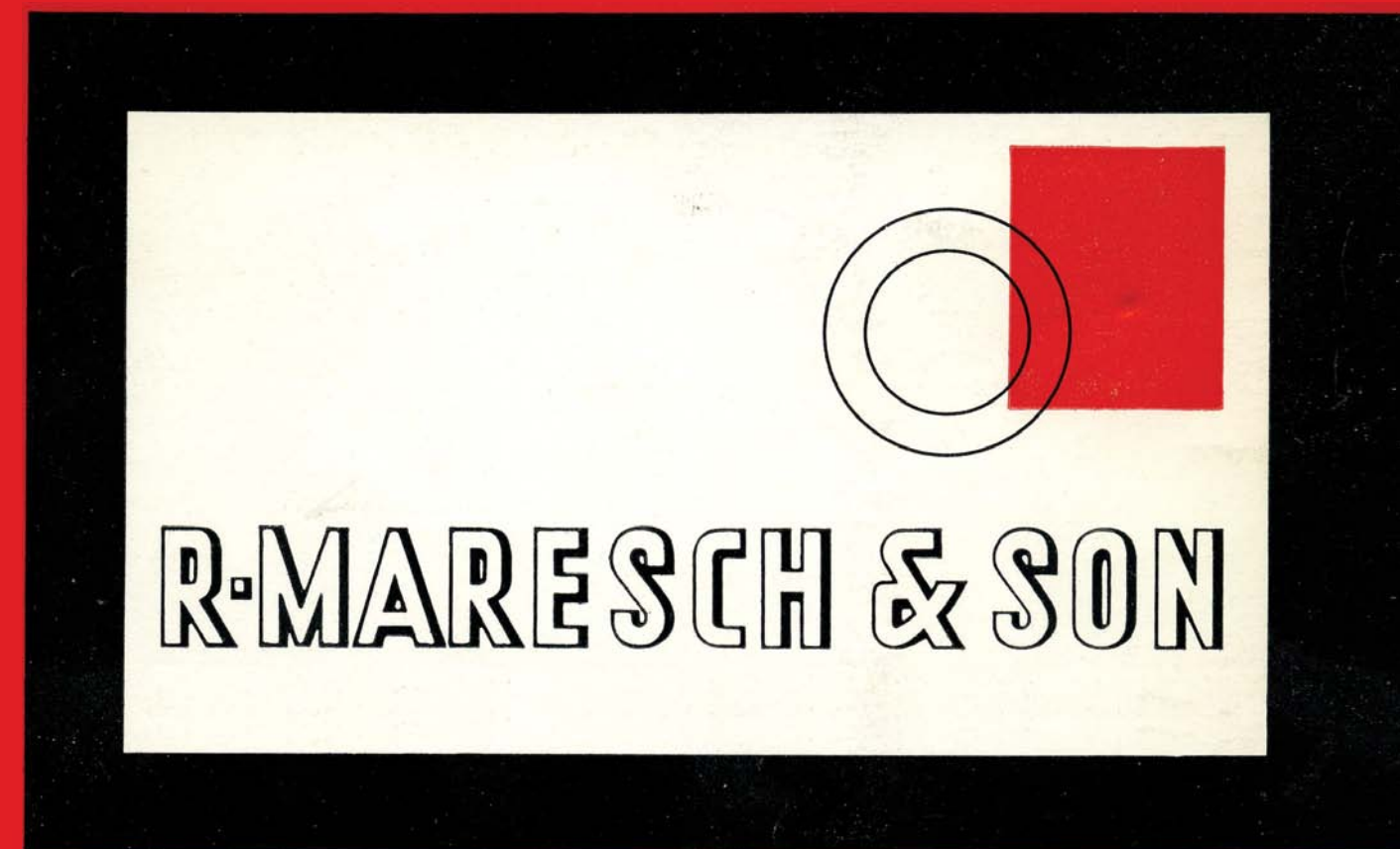


567th
AUCTION SALE

March 16th-17th, 2022



Viewing March 7th to 12th, 14th, and 15th

All lots are on
display at our office from
10.00 a.m. till 6.00 p.m.

r. maresch & son

CANADA'S PREMIER STAMP AUCTION HOUSE SINCE 1924

6-2 VATA COURT, AURORA, ON L4G 4B6 CANADA

(905) 726-2197

www.maresch.com

©2022





It is with great sadness that I announce the passing of long time philatelist, trusted advisor, and loyal friend, Rick Sheryer. Rick started working at R. Maresch & Son with my dad in the early 1980s and quickly became a trusted partner.

This special catalogue is dedicated to the Essays and Proofs of British North America, one of the many different fields that Rick loved to collect. Rick and I had talked for years about him creating a new catalogue for the BNA Proofs. Hopefully you will find some to enjoy as much as he did.

Rick's knowledge of philately is known and trusted worldwide. He was passionate about sharing it, and always willing to help with any questions I or anyone else had. The entire stamp community and I will miss him.

Our November auction continued the consistently successful trend we have seen here at Maresch regardless of the COVID pandemic. We continue to see many strong and record realizations throughout. The market right now is very 'collector-driven' and whether it's stamps, proofs or postal history, the bids are still there for specialized collections, and any quality and above-average material.

This seems to be true for most regions of the world especially Canada and Provinces, British Commonwealth, and the United States. The last sale brought over 135% of our pre-sale estimate, so the demand overall is quite strong.

This general sale has a wide range of over 60 owners from estates to downsizers. This sale offers numerous lots of Canadian varieties, Postal History, Large and Small Queens, Admirals including Lathework, Newfoundland and Provinces, plus lots of Worldwide larger lots and collections and many Christmas topical lots and collections from all regions of the world.

We will be open again for viewing during our normal week and a half plus the Saturday for in house viewing. Earlier viewing by appointment can be arranged for out-of-town customers. We have lots of nice material for every collecting taste, there is plenty of viewing room for out-of-town collectors and dealers and everything will be sold at UNRESERVED PUBLIC AUCTION. Please come and see us.

COVID is still an issue, even with many people being vaccinated. However, we have been notified by the Mississauga Stamp show, ORAPEX and CANPEX that all things are at this time going forward as planned.

If you have stamps or other philatelic material to sell, we would be delighted to help. Proper preparation, description and advertising are necessary in order for you to obtain top prices for your material when selling at auction. Let us help you by allowing ample time to properly present your treasures in one of our world-class public auctions. All it takes is a simple call or email to discover how straightforward and profitable we can make the process of selling at auction for you. We look forward to hearing from you.

We hope everyone had a nice safe holiday with friends, family and loved ones.

We are all looking forward for the upcoming CAPEX22 Stamp Show June 9-12, 2022, and the Fred Fawn Auction Friday June 10, 2022. We hope to see many of you at our booths 711 and 713. Please make your arrangements for accommodations as soon as possible. You can visit the CAPEX22 website for further information at <https://capex22.org/>

Peter Maresch January 2022

TERMS OF SALE

1. **ALL LOTS IN THIS AUCTION ARE OFFERED WITHOUT RESERVE.** All bids are per lot as described in this catalogue. The right is reserved to withdraw any lot prior to sale, to divide a lot, or to group two or more lots belonging to the same vendor. The auctioneer shall regulate the bidding on the floor. The auctioneer reserves the right to reject any bid. In the event of any dispute, their decision shall be final.
2. The highest bidder shall prevail at one advance over the next highest bidder. Tie bids shall go to the first received. **A BUYER'S PREMIUM OF 18% WILL BE ADDED TO THE HAMMER (SELLING) PRICE AND BECOMES PART OF THE TOTAL PURCHASE PRICE.**
3. Successful FLOOR BIDDERS must pick up their lots or arrange for delivery immediately after the sale. PAYMENT IS DUE AT THIS TIME. MAIL BIDDERS known to us may have their lots forwarded for payment within three days. Others will receive an invoice immediately after the sale and must make remittance before lots are sent. Overdue accounts will be billed a 3% service charge per month. Lots not picked up and paid for after 30 days may at our discretion, be re-offered in the next available auction. Ownership shall not pass to the buyer until full payment has been received.
4. Shipping and handling are charged to the account of the buyer. Shipments to Canada will be sent by Expedited parcel, to USA by Tracked Packet-USA or Xpresspost USA, all other destinations up to 500g will be sent by registered mail, larger parcels by Xpresspost International, Tracked Packet International (where available), or by Priority Worldwide, or comparable secured methods.
5. In our opinion, all lots are as described. If a prospective purchaser wishes to obtain another expert opinion - acceptable to us - on a lot (not including mixed lots or collections containing undescribed stamps), they must request an extension in writing **before** the auction (on the bid sheet is acceptable). Lots sold under this condition shall be held open for up to 120 days, after which the lot will not be returnable for any reason. **Items that already have certificates are sold on the basis of those certificates (unless otherwise stated in the description). Buyers wanting to place a lot on extension for a different certificate must discuss that with us BEFORE the auction to obtain approval to bid on that basis.** Expenses for certificates shall be borne by the purchaser. If a negative opinion is received within the 120 days, the purchase price will be refunded in full, and the expertising fee (to a maximum of \$50) will be paid by us. All lots sent on extension must be paid for under our normal terms. The inability of an expert committee to render an opinion on a lot is insufficient grounds for its return.
6. Claims for errors in description, including condition, must be made within 7 days after receipt, but no later than 45 days after the auction. Stamps returned must be in the state received and must be sent by a signature mail service or bonded courier. Lots that have been back stamped, marked or encapsulated by experts or expert committees are not returnable. It is the purchaser's responsibility not to let this happen. Stamps described as having defects are not returnable on account of their condition. No lots may be returned by bidders who have had an opportunity to examine, or an agent, view them on their behalf before the sale, nor any stamps which have been photographed for perforations, centering, margins or cancellations. All stamps photographed in colour are reproduced with extreme care as to accuracy of colour and shades, however stamps photographed in colour may not be returned because of shade differences or centering between the lot and photograph.
7. All lots are sold in **CANADIAN FUNDS**. Lots picked up in Ontario will be charged H.S.T., lots delivered in Canada will be charged the appropriate G.S.T. or H.S.T. For the convenience of our American clients, U.S. funds will be accepted at a rate of exchange to be determined by the auctioneer and announced at the opening of the sale. If you wish to pay in U.S. funds, please pay the amount stated on your invoice.
8. **QUALITY RATINGS:** Superb, extremely fine, very fine, fine to very fine, fine, very good, and good.
9. **CATALOGUE NUMBERS AND VALUES** used are from the most currently available edition of Scott's Standard Postage Stamp Catalogue and are quoted in US dollars. For B.N.A. material, numbers and values are from the current edition of the Unitrade Canada Specialized Catalogue and are in Canadian dollars, with appropriate premiums. When we catalogue a collection, we omit all obviously faulty, damaged, faked or forged stamps; our count of the stamps and catalogue value will be a conservative calculation. Owners sometimes catalogue every stamp or portion thereof, regardless of quality. We accept no responsibility for these valuations. Errors may occur nevertheless and (in spite of all our careful work) all collections are sold "as is".
10. **AGENTS BIDDING ON BEHALF OF OTHERS:** If you have complicated bids to be executed or wish an outside opinion as to the value and condition of a lot we shall be pleased to furnish a list of agents. If you instruct your agent to bid on the basis of our descriptions, we presume that they have inspected the lot and agree with our description in executing your bid. **Agents must register their bidders and obtain approval before our sales start.**
11. This sale is conducted by and for the account of R. Maresch & Son Auctions Limited.
12. THE PLACING OF A BID SHALL CONSTITUTE ACCEPTANCE OF THESE TERMS OF SALE.

ABBREVIATIONS AND SYMBOLS

○	used	L	literature	SG	Stanley Gibbons Catalogue
☒	cover, card	lh	lightly hinged	SON	socked-on-the-nose cancel
★	original gum, never hinged	LL	lower left	TC	Trial Colour Proof
★★	mint with original gum	LR	lower right	UCS	Unitrade Canada Specialized Catalogue
(★)	no gum or regummed	MC	Maltese Cross cancel	UL	upper left
ACSC	Australian Commonwealth Specialists' Catalogue	Mi	Michel	UR	upper right
BOB	back of book	ms	manuscript	vf	very fine
cds	circular date stamp	NSSC	Newfoundland Specialized Stamp Catalogue	vlh	very lightly hinged
CP	Campbell Paterson Specialized New Zealand	nh	never hinged	Y&T	Yvert & Tellier Catalogue
DP	Die Proof	og	original gum	Zum	Zumstein Switzerland Specialized Catalogue
E	essay	P	proof	€	Euro
F	forgery	PP	plate position	£	British Pound Sterling
f-vf	fine to very fine	R&S	Reiche and Sendbuehler	¥	Japanese Yen
hh	heavily hinged	SASCC	South African Stamp Colour Catalogue		
hr	hinge remnant	S	Specimen		
hs	hand stamp	s/s	souvenir sheet		

Mail bids not conforming to these intervals will be reduced to conform.

<i>BIDS</i>	<i>INCREMENT</i>	<i>BIDS</i>	<i>INCREMENT</i>
<i>Up to \$100</i>	<i>5</i>	<i>Up to \$3000</i>	<i>100</i>
<i>Up to \$300</i>	<i>10</i>	<i>Up to \$10000</i>	<i>250</i>
<i>Up to \$1000</i>	<i>25</i>	<i>Up to \$20000</i>	<i>500</i>
<i>Up to \$2000</i>	<i>50</i>	<i>Over 20000</i>	<i>1000</i>

AUCTION CATALOGUES AND PRICES REALIZED. If you wish to continue to receive our catalogues and prices realized, please subscribe or you may be removed from our list.



r. maresch & son

AUCTIONS LIMITED

2 VATA CRT UNIT 6 AURORA ON L4G 4B6 CANADA

☎ (905) 726-2197 **www.maresch.com** E-MAIL bids@maresch.com

I hereby authorize R. MARESCH & SON AUCTIONS LIMITED to purchase on my behalf the following lots, at or under the limit stated. I have read and agree to the terms of sale as printed in the catalogue.

Bidder's Name and Address (please print)

Please check if this is a change of address.

Please check if you have read our shipping terms.

E-mail address _____

A Buyers' Premium of 18% will be added to the hammer price and becomes part of the total purchase price.

☎ PHONE _____ (Required for customs outside CANADA)

You may increase my bids by one increment to break ties. **Signature** _____

SHIP LOTS UNDER \$ _____ BY REGULAR MAIL AT MY RISK, PAYMENT WILL BE SENT FIRST.

PLEASE ENSURE BID SHEETS REACH OUR OFFICES PRIOR TO THE SALE

Lot No.	Bid	Lot No.	Bid	Lot No.	Bid	Lot No.	Bid
						BIDS	INCREMENTS
						Up to 100.....	5
						Up to 300.....	10
						Up to 1000.....	25
						Up to 2000.....	50
						Up to 3000.....	100
						Up to 5000.....	250
						Up to 10000.....	500
						Up to 30000.....	1000
						Over 30000.....	2500

CALL US TOLL FREE IN CANADA AND UNITED STATES at 1-800-363-0777

r. maresch & son

PRICES REALIZED

SALE 565-566 November 3-4, 2021 (not including 18% buyers' premium.)

1	675	49	85	97	550	145	46	193	55	241	20	295	170	343	80	397	110	451	85	505	100	559	80	613	90
2	1200	50	110	98	950	146	90	194	38	242	30	296	100	344	90	398	100	452	90	506	130	560	200	614	210
3	475	51	170	99	210	147	60	195	95	243	26	297	160	345	95	399	625	453	60	507	400	561	170	615	42
4	1000	52	725	100	350	148	60	196	28	244	30	298	210	346	120	400	160	454	210	508	110	562	170	616	500
5	525	53	725	101	1000	149	280	197	46	245	26	299	230	347	250	401	100	455	110	509	150	563	28	617	160
6	350	54	675	102	190	150	160	198	55	246	20	300	65	348	140	402	200	456	280	510	130	564	90	618	48
7	1150	55	475	103	230	151	65	199	28	247	30	301	140	349	150	403	550	457	65	511	170	565	46	619	260
8	850	56	450	104	550	152	375	200	40	248	WD	302	725	350	85	404	70	458	230	512	375	566	32	620	110
9	1100	57	160	105	140	153	55	201	28	249	48	303	180	351	180	405	160	459	200	513	260	567	80	621	80
10	775	58	525	106	140	154	140	202	55	250	180	304	270	352	325	406	375	460	130	514	140	568	775	622	110
11	925	59	325	107	1100	155	70	203	44	251	42	305	80	353	475	407	140	461	75	515	140	569	50	623	60
12	3500	60	600	108	90	156	65	204	40	252	100	306	300	354	375	408	85	462	260	516	425	570	450	624	95
13	1050	61	475	109	1250	157	75	205	28	253	110	307	875	355	409	409	700	463	150	517	425	571	160	625	290
14	6500	62	525	110	425	158	65	206	38	254	44	308	725	361	350	416	300	470	625	523	500	572	90	626	130
15	2500	63	600	111	130	159	34	207	38	255	36	309	900	362	500	417	140	471	70	525	170	579	60	633	230
16	725	64	525	112	250	160	170	208	120	256	90	310	475	364	2300	418	150	472	290	526	110	580	110	634	425
17	1150	65	875	113	190	161	110	209	40	257	34	311	350	365	300	419	170	473	230	527	500	581	95	635	400
18	2600	66	180	114	575	162	250	210	70	258	40	312	500	366	100	420	95	474	70	528	575	582	210	636	170
19	325	67	375	115	230	163	120	211	40	259	28	313	120	367	350	421	110	475	300	529	500	583	110	637	210
20	350	68	260	116	800	164	40	212	40	260	34	314	250	368	240	422	70	476	190	530	325	584	350	638	120
21	325	69	525	117	240	165	130	213	65	261	55	315	325	369	100	423	70	477	290	531	425	585	180	639	130
22	450	70	260	118	170	166	28	214	50	262	48	316	240	370	80	424	70	478	260	532	300	586	1100	640	70
23	425	71	150	119	600	167	38	215	625	263	34	317	260	371	260	425	170	479	120	533	290	587	290	641	110
24	725	72	725	120	240	168	325	216	260	264	50	318	775	372	260	426	110	480	55	534	325	588	110	642	190
25	325	73	130	121	120	169	48	217	100	265	38	319	290	373	210	427	120	481	60	535	375	589	75	643	210
26	700	74	750	122	1050	170	65	218	400	266	20	320	500	374	325	428	170	482	90	536	400	590	325	644	100
27	220	75	2000	123	375	171	80	219	240	267	46	321	120	375	750	429	90	483	250	537	700	591	50	645	75
28	475	76	1250	124	230	172	50	220	425	268	46	322	190	376	375	430	120	484	190	538	450	592	300	646	80
29	825	77	875	125	100	173	55	221	120	269	46	323	75	377	800	431	120	485	150	539	350	593	210	647	110
30	800	78	375	126	50	174	40	222	40	270	55	324	90	378	450	432	42	486	200	540	325	594	55	648	350
31	650	79	1450	127	46	175	60	223	150	271	400	325	500	379	1100	433	90	487	240	541	220	595	170	649	800
32	375	80	625	128	40	176	70	224	230	272	50	326	65	380	925	434	150	488	150	542	210	596	200	650	350
33	425	81	75	129	40	177	60	225	525	273	65	327	425	381	220	435	90	489	130	543	70	597	500	651	110
34	240	82	875	130	50	178	28	226	210	274	120	328	180	382	375	436	220	490	95	544	190	598	350	652	220
35	800	83	110	131	42	179	34	227	42	275	95	329	140	383	875	437	160	491	325	545	290	599	425	653	120
36	250	84	220	132	40	180	38	228	65	276	90	330	160	384	160	438	110	492	200	546	140	600	400	654	825
37	725	85	875	133	44	181	28	229	WD	277	110	331	210	385	180	439	160	493	130	547	48	601	290	655	140
38	500	86	350	134	30	182	32	230	50	278	48	332	210	386	200	440	130	494	180	548	80	602	180	656	270
39	300	87	300	135	48	183	28	231	38	279	32	333	425	387	1550	441	120	495	260	549	70	603	48	657	80
40	260	88	800	136	50	184	65	232	160	280	32	334	140	388	290	442	100	496	450	550	60	604	190	658	170
41	325	89	140	137	65	185	28	233	WD	281	34	335	95	389	260	443	50	497	325	551	240	605	95	659	1350
42	425	90	260	138	46	186	60	234	110	282	26	336	110	390	160	444	210	498	190	552	160	606	75	660	130
43	550	91	1150	139	46	187	42	235	20	283	32	337	120	391	130	445	180	499	210	553	WD	607	140	661	100
44	160	92	875	140	42	188	30	236	20	284	95	338	190	392	120	446	150	500	140	554	650	608	80	662	160
45	250	93	475	141	46	189	28	237	22	285	48	339	85	393	80	447	85	501	85	555	WD	609	38	663	1450
46	725	94	1000	142	30	190	75	238	34	286	120	340	220	394	85	448	110	502	230	556	350	610	60	664	150
47	400	95	1100	143	95	191	40	239	20	287	190	341	120	395	100	449	130	503	250	557	210	611	95	665	250
48	130	96	350	144	150	192	75	240	WD	288	400	342	80	396	140	450	425	504	110	558	190	612	WD	666	250

* Lot offered on floor with new description.

WD Withdrawn.

~ Grouped with above lot(s).

NL No lot.

**FIRST SESSION (PART I) - WEDNESDAY, MARCH 16th, 2022
at 10:00 AM EST SHARP - SALE 567**

CANADA ESSAYS AND PROOFS

UCS Cat Val

- 1 P **POSTAL STATIONERY: POST CARDS: P61-P1: C.B.N. PROFILE ISSUE: 1/2¢ RECESS PRINTED LARGE DIE PROOF** on thin wove (75x80mm, positive print but tonally negative) in BLACK, with (Die No.) 'XG-614' at top, manuscript pencil numeral '4' and 'Order #599 6/12/35' notation on back, light paper clip mark UL away from design, still rare and very fine. Ex A.B.N. Co Archives sale. Est. 500+.....



1



2

UCS Cat Val

- 2 P **POSTAL STATIONERY: ESSAYS AND PROOFS: EN71-P1-P3: ARCH ISSUE 1¢ to 3¢ on wove, (3x1) all with crease UR margin, otherwise very fine.....** 300
- 3 P **VIGNETTES: LARGE DIE PROOF of the ORIGINAL PARLIAMENT BUILDING (before the fire) DIE SUNK on india (49x112mm) on LARGE CARD (151x227mm), with (die no) CANADA-B-6 and AMERICAN BANK NOTE CO. OTTAWA imprint at bottom, clean and very fine. Est. 200+.....**
- 4 P **VIGNETTES: LARGE DIE PROOF showing large CANADIAN COAT OF ARMS (surrounded by Mercury and Ceres), DIE SUNK on india (136x114mm) on LARGE CARD (228x151mm), (die no) CANADA-B-20 and AMERICAN BANK NOTE CO. OTTAWA imprint at bottom, very fine. Est. 200+.....**



3



4

- 5 P **LARGE ENGRAVED PROOF of PRINCE ALBERT** circa 1860 with **Continental Bank Note Co. New York 118 DIE SUNK** on india (75x66mm) on card (103x118mm) some foxing on card at left, otherwise very fine. Est. 200+.....



5



6



7



8



9



10



11



12



13

PROVINCE OF CANADA BRADBURY, WILKINSON & CO. ESSAYS

- 6 E **DICKENS ONE PENNY, PLATE ESSAY**, on wove paper in DIM BROWN, very fine and scarce. (Minuse & Pratt E-A.a 1 Penny) Est. 750+.....
- 7 E **VICTORIA HEAD, ONE PENNY PLATE ESSAY**, BLUE on hard bond paper (0.004"), very fine. (Minuse & Pratt E-Bb 1 Penny). Est. 500+.....
- 8 E **VICTORIA HEAD, ONE PENNY PLATE ESSAY**, BROWN on hard bond paper (0.004"), very fine. (Minuse & Pratt E-Bb 1 Penny). Est. 500+.....
- 9 E **VICTORIA HEAD, ONE PENNY PLATE ESSAY**, REDDISH BROWN on hard bond paper (0.004"), very fine. (Minuse & Pratt E-Bb 1 Penny). Est. 500+.....
- 10 E **VICTORIA HEAD, ONE PENNY PLATE ESSAY**, MAROON on hard bond paper (0.004"), very fine. (Minuse & Pratt E-Bb 1 Penny). Est. 500+.....
- 11 E **VICTORIA HEAD ONE CENT DIE ESSAY**, BLACK, very fine. (Minuse & Pratt E-B.a 1 Cent). Est. 500+.....
- 12 E **VICTORIA HEAD ONE PENNY PLATE ESSAY**, GREYISH-GREEN, crease at right, appears very fine. (Minuse & Pratt E-B.b 1 Penny). Est. 400+.....
- 13 E **VICTORIA HEAD ONE PENNY PLATE ESSAY**, GREEN, on wove paper, very fine. (Minuse & Pratt E-Ba). Est. 500+.....

- 14 E ROMAN HELMET SIX PENCE PLATE ESSAY, BROWN, very fine. (Minuse & Pratt E-C.a). Est. 750+.....
- 15 E ROMAN HELMET SIX PENCE PLATE ESSAY, DARK VIOLET, very fine. (Minuse & Pratt E-C. 1 Penny). Est. 750+.....
- 16 E ROMAN HELMET SIX PENCE PLATE ESSAY, GREEN, very fine and scarce. (Minuse & Pratt E-Ca). Est. 750+.....



14



15



16



17



18



19



20

PENCE PROOFS

- 17 P 1P: THREE PENCE: PLATE PROOF, RED on india, thinned, appears very fine..... 350
- 18 P 1P: THREE PENCE: PLATE PROOF, RED on india, clear to large margin showing -York. of imprint at UR, very fine. 2008 Greene Cert... 350
- 19 P 1TCi: THREE PENCE: PLATE PROOF, BROWN RED with horizontal GREEN BLACK SPECIMEN on india, very fine..... 300
- 20 P 1TCi: THREE PENCE: PLATE PROOF, BROWN RED with horizontal GREEN BLACK SPECIMEN on india, bottom margin copy, very fine..... 300
- 21 P 1TCi: THREE PENCE: PLATE PROOF, BROWN RED with horizontal GREEN BLACK SPECIMEN on india, UL corner margin copy, pin hole in margin and oxidization at top..... 300
- 22 P 1TCv: THREE PENCE: PLATE PROOF, BLACK with horizontal ORANGE SPECIMEN on india, fine..... 300
- 23 P 2TC: SIX PENCE: PLATE PROOF, RED LILAC on india on card, very fine..... 300



21



22



23



24



25



28



26



27



29



30



31

UCS Cat Val

24	P	2TCii: SIX PENCE: PLATE PROOF , ORANGE YELLOW on india, very fine.....	450
25	P	2TCv: SIX PENCE: PLATE PROOF , GREY with vertical ORANGE SPECIMEN on india, BLOCK OF FOUR, very fine.....	1200
26	P	2TCvii: SIX PENCE: PLATE PROOF , DARK GREY with vertical CARMINE SPECIMEN on india, very fine.....	300
27	P	2TCvii: SIX PENCE: PLATE PROOF , DARK GREY with vertical CARMINE SPECIMEN on india, top margin copy, very fine.....	300
28	P	2TCvii: SIX PENCE: PLATE PROOF , DARK GREY with vertical CARMINE SPECIMEN on india, BLOCK OF FOUR, fine.....	1200
29	P	2TCviii: SIX PENCE: PLATE PROOF , GREENISH GREY with vertical CARMINE SPECIMEN on india, very fine.....	300
30	P	2TCx: SIX PENCE: PLATE PROOF , BLACK with vertical ORANGE SPECIMEN on india, very fine.....	375
31	P	2TCx: SIX PENCE: PLATE PROOF , BLACK with vertical ORANGE SPECIMEN on india, very fine.....	375
32	P	3Pi: TWELVE PENCE: PLATE PROOF , BLACK with vertical CARMINE SPECIMEN on india, very fine.....	2500
33	P	3Pi: TWELVE PENCE: PLATE PROOF , BLACK with vertical CARMINE SPECIMEN on india on card, very fine.....	2500
34	P	3TC: TWELVE PENCE: SCAR DIE PROOF , DIM DARK RED on soft white bond paper, couple natural paper faults in margin, appears very fine. (Minuse & Pratt E3TC3g).....	11000
35	P	3TC: TWELVE PENCE: SCAR DIE PROOF , BLUISH GREY on india, very fine. (Minuse & Pratt E3TC3a).....	11000



32



33



34



35



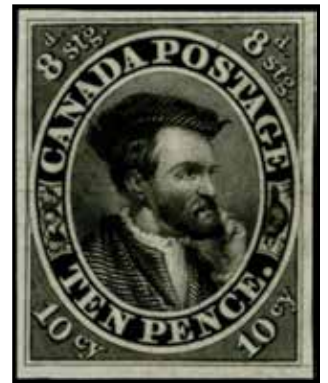
36



37

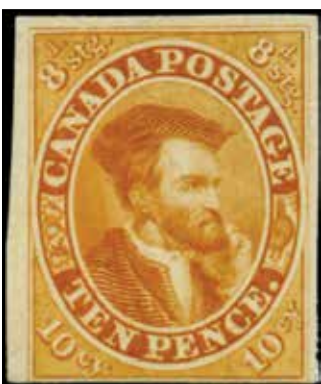


38



39

		UCS Cat Val
36	P 7P: TEN PENCE: PLATE PROOF, BLUE on india, very fine.....	300
37	P 7Pi: TEN PENCE: PLATE PROOF, DEEP BLUE with vertical CARMINE SPECIMEN on india, very fine.....	300
38	P 7Pi: TEN PENCE: PLATE PROOF, DEEP BLUE with vertical CARMINE SPECIMEN on india on card, very fine.....	300
39	P 7TC: TEN PENCE: PLATE PROOF, BLACK on india, very fine.....	750
40	P 7TCiii: TEN PENCE: PLATE PROOF, ORANGE YELLOW on india on card, fine.....	400
41	P 7P: TEN PENCE: TRADE SAMPLE SHEET PROOF, DULL RED, very fine.....	1000
42	P 7P: TEN PENCE: TRADE SAMPLE SHEET PROOF, PALE ROSE, with ink lines crossing it out. Interesting.....	1000
43	P 8P: HALF PENNY: PLATE PROOF, ROSE on india, very fine.....	300



40



41



42



43



44



45



46

UCS Cat Val

- | | | | |
|----|---|--|-----|
| 44 | P | 8Pi: HALF PENNY: PLATE PROOF, ROSE with vertical GREEN BLACK SPECIMEN on india, pair, very fine..... | 600 |
| 45 | P | 8Pi: HALF PENNY: PLATE PROOF, ROSE with vertical GREEN SPECIMEN on india, slight oxidization at UR, appears very fine..... | 300 |
| 46 | P | 8Pi: HALF PENNY: PLATE PROOF, ROSE with vertical GREEN SPECIMEN on india, oxidization at top..... | 300 |



47



48

UCS Cat Val

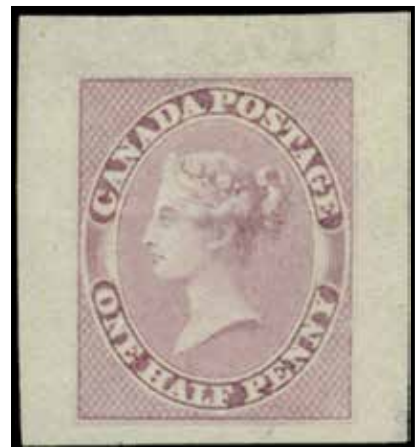
- | | | | |
|----|---|--|------|
| 47 | P | 8Pi: HALF PENNY: PLATE PROOF, ROSE with vertical GREEN SPECIMEN on india, right margin BLOCK OF FOUR showing Rawdon, Wright, Hatch & Edison. New Yo(rk) of inscription, oxidization on top two stamps and margin, otherwise very fine..... | 1200 |
| 48 | P | 8TC: HALF PENNY: PLATE PROOF, DEEP ROSE on india, BLOCK OF FOUR, very fine..... | 1200 |



49



50



51

49	P	8TCi: HALF PENNY: PLATE PROOF , ORANGE YELLOW on india, very fine.....	400
50	P	8TCii: HALF PENNY: PLATE PROOF , BLACK with vertical CARMINE SPECIMEN on india, very fine.....	300
51	P	8P: HALF PENNY: TRADE SAMPLE SHEET PROOF , close to colour of issue, very fine.....	1000



52



53



58



54



55



56



57

52	E	9E: SIX PENCE STERLING : American Bank Note Co. New-York small GOODALL DIE ESSAY ORANGE RED on soft white wove with cross hatching, on card mounted india paper (32x39mm), very fine. RARE. (Minuse & Pratt 9Eb). Est. 5000+.....
53	E	9E: SIX PENCE STERLING : American Bank Note Co. New-York small GOODALL DIE ESSAY DULL BROWN on soft white wove with cross hatching, on card mounted india paper (32x39mm), light horizontal crease, still appears very fine. RARE. Ex. V G Greene. (Minuse & Pratt 9Eb). Est. 4000+.....
54	P	9P: SEVEN AND A HALF PENCE: PLATE PROOF , GREEN on india, fine.....	350
55	P	9P: SEVEN AND A HALF PENCE: PLATE PROOF , GREEN on india, top margin showing (Ha)tch & Edison. New York of imprint, wrinkles at UR appears very fine.....	350
56	P	9TC: SEVEN AND A HALF PENCE: PLATE PROOF , BLACK on india, fine. 2014 Greene Cert.....	1200
57	P	9TCi: SEVEN AND A HALF PENCE: PLATE PROOF , BLACK with vertical CARMINE SPECIMEN on india, very fine.....	500
58	P	9TCi: SEVEN AND A HALF PENCE: PLATE PROOF , BLACK with vertical CARMINE SPECIMEN on india, vertical pair, fine.....	1000

RIEL REBELLION ESSAYS

UCS Cat Val

- | | | | |
|----|---|---|-------|
| 59 | E | RIEL REBELLION ESSAY in GREEN, bilingual inscription 'REPUBLIQUE CANADIENNE/CANADIAN REPUBLIC', og, very fine. 2016 Greene Cert. Est. 1000+..... | |
| 60 | E | RIEL REBELLION ESSAY in RED, bilingual inscription 'REPUBLIQUE CANADIENNE/CANADIAN REPUBLIC', creases, appears very fine. 2016 Greene Cert. Est. 500+..... | |



59



60



61



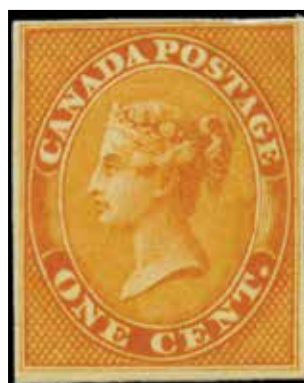
62



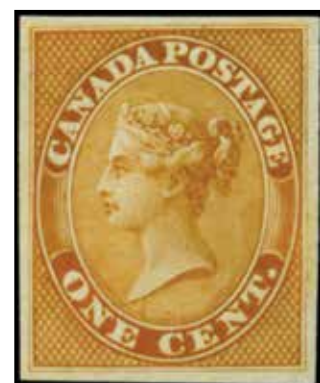
63



64



65



66

FIRST CENTS ONE CENT

UCS Cat Val

- | | | | |
|----|---|--|-----|
| 61 | P | 14P: ONE CENT: PLATE PROOF , ROSE on india, very fine..... | 250 |
| 62 | P | 14P: ONE CENT: PLATE PROOF , ROSE on india, very fine..... | 250 |
| 63 | P | 14Pi: ONE CENT: PLATE PROOF , ROSE with vertical BLACK SPECIMEN, on india, very fine..... | 250 |
| 64 | P | 14Pii: ONE CENT: PLATE PROOF , ROSE with vertical BLACK SPECIMEN on india, fine..... | 500 |
| 65 | P | 14TCii: ONE CENT: PLATE PROOF , ORANGE YELLOW on india on card, fine..... | 350 |
| 66 | P | 14TCii: ONE CENT: PLATE PROOF , LIGHT ORANGE YELLOW on india on card, very fine..... | 350 |
| 67 | P | 14TCiii: ONE CENT: PLATE PROOF , CLARET on india, very fine..... | 275 |
| 68 | P | 14TCiii: ONE CENT: PLATE PROOF , CLARET on india, very fine..... | 275 |



67



68



69



70



71



72



73



74

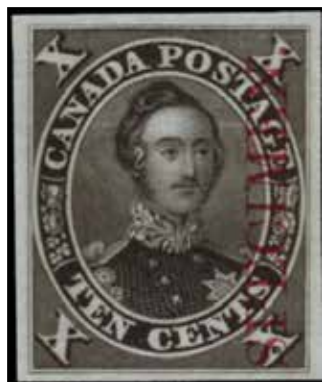
UCS Cat Val

FIVE CENT

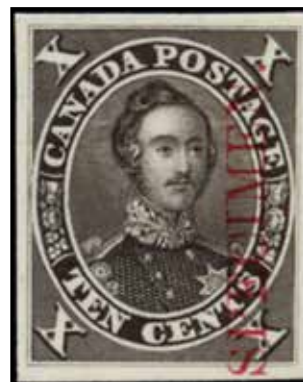
69	P	15P: FIVE CENT: PLATE PROOF , VERMILION on india, water stain, still appears very fine.....	300
70	P	15P: FIVE CENT: PLATE PROOF , VERMILION on india, BLOCK OF FOUR, very fine.....	1200
71	P	15P: FIVE CENT: PLATE PROOF , VERMILION on india, right margin BLOCK OF FOUR, slight oxidization, appears very fine.....	1200
72	P	15TCiv: FIVE CENT: PLATE PROOF , RED BROWN with horizontal BLACK SPECIMEN on india, very fine.....	250
73	P	15TCiv: FIVE CENT: PLATE PROOF , RED BROWN with horizontal BLACK SPECIMEN on india on card, very fine.....	250
74	P	15TCviii: FIVE CENT: PLATE PROOF , ORANGE YELLOW on india, light crease LR appears very fine.....	600



75



76



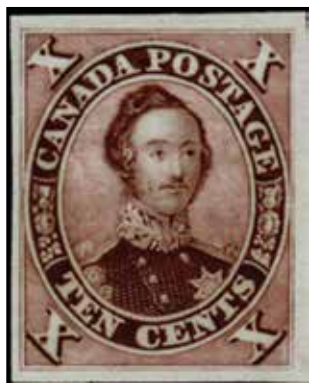
77



78

TEN CENT

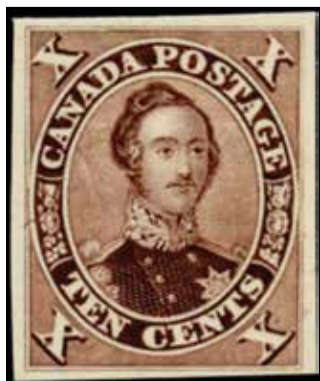
75	P	16Pi: TEN CENT: PLATE PROOF , BLACK BROWN with vertical CARMINE SPECIMEN on india, very fine.....	450
76	P	16Pii: TEN CENT: PLATE PROOF , BLACK BROWN with diagonal CARMINE SPECIMEN on india, very fine.....	600
77	P	16TCi: TEN CENT: PLATE PROOF , BLACK BROWN with vertical CARMINE SPECIMEN on india on card, very fine.....	450
78	P	16TCii: TEN CENT: DIE PROOF , BLACK, from composite with 12d, small nick UR, still very fine.....	3000
79	P	17TC: TEN CENT: PLATE PROOF , on india, very fine.....	250
80	P	17TC: TEN CENT: PLATE PROOF , on india on card, very fine.....	250
81	P	17TC: TEN CENT: PLATE PROOF , on india on card, BLOCK OF FOUR, very fine.....	1000
82	P	17TCi: TEN CENT: PLATE PROOF , on india, very fine.....	275



79



81



80



82



83



85



84

TWELVE AND A HALF CENT

83	P	18P: TWELVE AND A HALF CENT: PLATE PROOF , YELLOW GREEN on india, very fine.....	350
84	P	18P: TWELVE AND A HALF CENT: PLATE PROOF , YELLOW GREEN bottom margin vertical strip of three showing (A)merican Bank Note Co. New-Yor(k) on india on card, very fine.....	1050
85	P	18Pi: TWELVE AND A HALF CENT: PLATE PROOF , YELLOW GREEN with vertical CARMINE SPECIMEN on india, very fine.....	300



86



87



88



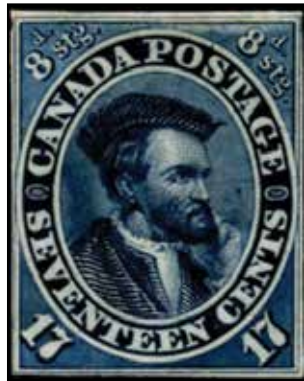
89

UCS Cat Val

86	P	18Pi: TWELVE AND A HALF CENT: PLATE PROOF, YELLOW GREEN with vertical CARMINE SPECIMEN on india, fine.....	300
87	P	18Piii: TWELVE AND A HALF CENT: PLATE PROOF, YELLOW GREEN with diagonal BLACK SPECIMEN on india on card, very fine.....	450
88	P	18TCi: TWELVE AND A HALF CENT: PLATE PROOF, BLUE on india on card, light black spots at left and LL, appears very fine.....	400
89	P	18TCix: TWELVE AND A HALF CENT: PLATE PROOF, BLACK on india, very fine.....	650



90



91



92



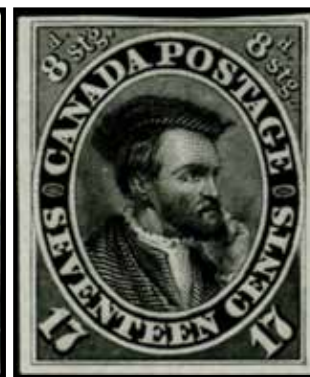
93



94



95



96



97

SEVENTEEN CENT

UCS Cat Val

90	P	19P: SEVENTEEN CENT: PLATE PROOF, BLUE on india, very fine.....	350
91	P	19P: SEVENTEEN CENT: PLATE PROOF, BLUE on india on card, fine.....	350
92	P	19Pi: SEVENTEEN CENT: PLATE PROOF, BLUE with vertical CARMINE SPECIMEN on india, very fine.....	300
93	P	19Pi: SEVENTEEN CENT: PLATE PROOF, BLUE with vertical CARMINE SPECIMEN on india on card, fine.....	300
94	P	19TC: SEVENTEEN CENT: PLATE PROOF, PALE BLUE on india, very fine.....	300
95	P	19TC: SEVENTEEN CENT: PLATE PROOF, PALE BLUE on india on card, left margin copy (pos 31), very fine.....	300
96	P	19TCi: SEVENTEEN CENT: PLATE PROOF, BLACK on india, very fine.....	550
97	P	19TCii: SEVENTEEN CENT: PLATE PROOF, ORANGE YELLOW on india, very fine.....	450



98



99



100

TWO CENT

UCS Cat Val

98	P	20TC: TWO CENT: PLATE PROOF , DARK ROSE on india, left margin copy, very fine.....	300
99	P	20TC: TWO CENT: PLATE PROOF , DARK ROSE on india, pair, left one with DASH IN 2 variety, very fine.....	600+
100	P	20TCi: TWO CENT: PLATE PROOF , CLARET on india, with DASH IN 2 variety, very fine.....	350+



101



102



103

UCS Cat Val

101	P	20TCi: TWO CENT: PLATE PROOF , CLARET on india, pair, very fine.....	700+
102	P	20TCii: TWO CENT: PLATE PROOF , GREEN on india on card, very fine.....	400
103	P	20TCii: TWO CENT: PLATE PROOF , GREEN on india on card, BLOCK OF FOUR, top pair showing two DASH IN 2 varieties, very fine.....	1600+



104

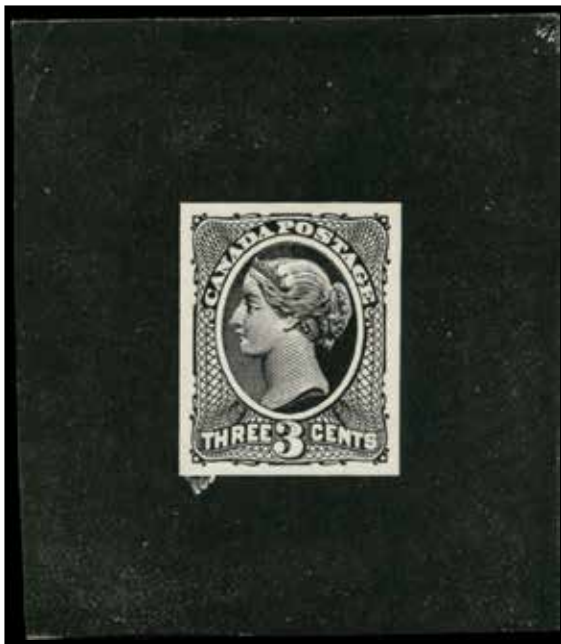


105

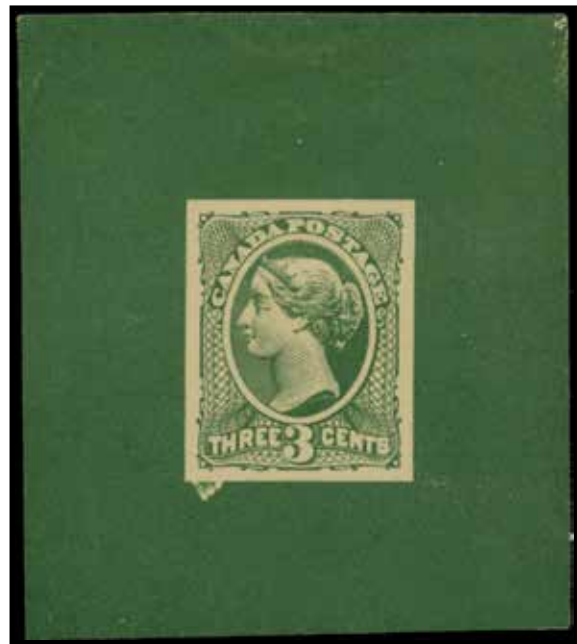
LARGE QUEENS

UCS Cat Val

- 104 E **THE NATIONAL BANK NOTE CO. NEW YORK: LARGE TYPOGRAPHED DIE ESSAY**, the THREE CENT UNFINISHED DESIGN on **THIN SURFACED CREAM-COLOURED CARD** (56x68mm) and the printed portion (51x63mm) in **PALE ROSE PINK**, leaving a border around the edge to mimic die sinkage, a RARE DIE ESSAY, very fine. (Minuse and Pratt 25EA-Ad). Est. 1500+.....
- 105 E **THE NATIONAL BANK NOTE CO. NEW YORK: LARGE TYPOGRAPHED DIE ESSAY**, the THREE CENT UNFINISHED DESIGN on **THIN SURFACED CREAM-COLOURED CARD** (59x70mm) and the printed portion (51x63mm) in **DARK YELLOW GREEN**, leaving a border around the edge to mimic die sinkage, RARE, very fine. Ex Menich, Brigham. Est. 2000+.....



106



107

UCS Cat Val

- 106 E **THE NATIONAL BANK NOTE CO. NEW YORK: THREE CENT LARGE TYPOGRAPHED DIE ESSAY**, the FINISHED DESIGN with Scrolls added, on **THIN SURFACED CREAM-COLOURED CARD** (58x65mm) in **BLACK**, shallow thin (far away from design), otherwise very fine, a RARE DIE ESSAY, very fine. Est. 1750+.....
- 107 E **THE NATIONAL BANK NOTE CO. NEW YORK: THREE CENT LARGE TYPOGRAPHED DIE ESSAY**, the FINISHED DESIGN with Scrolls added, on **THIN SURFACED CREAM-COLOURED CARD** (58x65mm) in **GREEN**, shallow thin (far away from design), otherwise very fine. Est. 1500+.....



108



109



110



111



112

UCS Cat Val

- 108 DP 21P: **HALF CENT: LARGE PROGRESSIVE DIE PROOF** showing only the CENTRAL PORTRAIT VIGNETTE used for the half cent value in BLACK on india paper (34x38mm), showing partial die sinkage at left and natural india paper fiber underneath, extremely fine. **UNIQUE CORNERSTONE EXHIBITION PIECE.** Ex Grant Glassco, Morris, Nickle & Brigham. Est. 10000+.....
- 109 TC 21TC: **HALF CENT: TRIAL COLOUR PLATE PROOF**, DARK BROWN on card, slight surface fault top left and bottom, far away from design, still a very fine and exceptionally RARE TRIAL COLOUR PROOF, one of only a half-dozen or so known. Ex Brigham. Est. 3000+.....
- 110 TC 22TC: **ONE CENT: TRIAL COLOUR PERFORATED PROOF**, DARK BLUE on gummed wove paper, 'FINISHED' PROOF, RARE. (One of only two known in this colour.) Ex Brigham. Est. 2000+.....
- 111 TC 22TC: **ONE CENT: TRIAL COLOUR PLATE PROOF**, DEEP GREEN on india, small thin at bottom edge, otherwise fine. RARE. Ex Lindemann, Brigham. Est. 750+.....
- 112 P 22P: **ONE CENT: PLATE PROOF**, BROWN RED on card, very fine..... 750



113



114



115



116

UCS Cat Val

- 113 P 22P: **ONE CENT: PLATE PROOF**, BROWN RED on card, very fine..... 750
- 114 DP 24DP: **TWO CENT: DIE PROOF**, BLACK on india mounted on card (24x29mm), with a piece of india paper (15x20mm) also adhering to card on the back showing intricate engine turning (the printer obviously re-used card backing which already had a banknote design adhering to the other side), very fine and **UNIQUE.** Ex - Menich, Brigham. Est. 7500+.....
- 115 TC 24TC: **TWO CENT: TRIAL COLOUR DIE PROOF**, RED BROWN on india (24x29mm), negligible india paper faults and scissor cut in bottom left margin only, still very fine, **EXTREMELY RARE.** (One of only two known in this colour) 1994 Greene Cert. Ex Brigham. Est. 7500+.....
- 116 TC 24TC: **TWO CENT: TRADE SAMPLE SHEET PROOF**, DARK BROWN on thick card, negligible shallow thin and bend in card, still very fine and scarce. Ex Lindemann, Brigham. Est. 750+.....



117



118



119



120

UCS Cat Val

- 117 P 24P: **TWO CENT: PLATE PROOF**, GREEN on card, very fine..... 750
- 118 E 25E: **THREE CENT: TRIAL COLOUR ESSAY**, BLUE GREEN on india paper, usual adhesive spots on back and some staining showing through, still very fine. EXTREMELY RARE. Est. 2500+.....
- 119 TC 25TC: **THREE CENT: TRIAL COLOUR PLATE PROOF**, DARK BROWN on card, very fine. Ex Brigham. Est. 750+.....
- 120 TC 25TC: **THREE CENT: TRIAL COLOUR PLATE PROOF**, PURPLE on card, very fine. Ex Brigham. Est. 750+.....



121



122



123



124

UCS Cat Val

- 121 TC 26TC: **FIVE CENT: TRIAL COLOUR PLATE PROOF**, VENETIAN RED on india, very fine and scarce. Ex Brigham. Est. 750+.....
- 122 TC 26TC: **FIVE CENT: TRIAL COLOUR PLATE PROOF**, DEEP NAVY BLUE on thin wove paper, very fine. RARE. Est. 750+.....
- 123 TC 26TC: **FIVE CENT: TRIAL COLOUR PLATE PROOF**, AZURE BLUE on card, very fine. Est. 750+.....
- 124 TC 26TC: **FIVE CENT: TRIAL COLOUR PLATE PROOF**, BRIGHT GREEN on card, very fine. Est. 750+.....



125



126



127



128

UCS Cat Val

- 125 P 26P: **FIVE CENT: PLATE PROOF**, OLIVE GREEN on card, very fine..... 750
- 126 DP 27DP: **SIX CENT: LARGE DIE PROOF**, BLACK crisp print on india paper (31x36mm), very fine **VERY RARE**. (One of only three known). Ex Menich, Brigham. Est. 15000+.....
- 127 P 27P: **SIX CENT: PLATE PROOF**, BROWN on card, fine..... 750
- 128 P 29P: **FIFTEEN CENT: PLATE PROOF**, on card, very fine..... 750



129



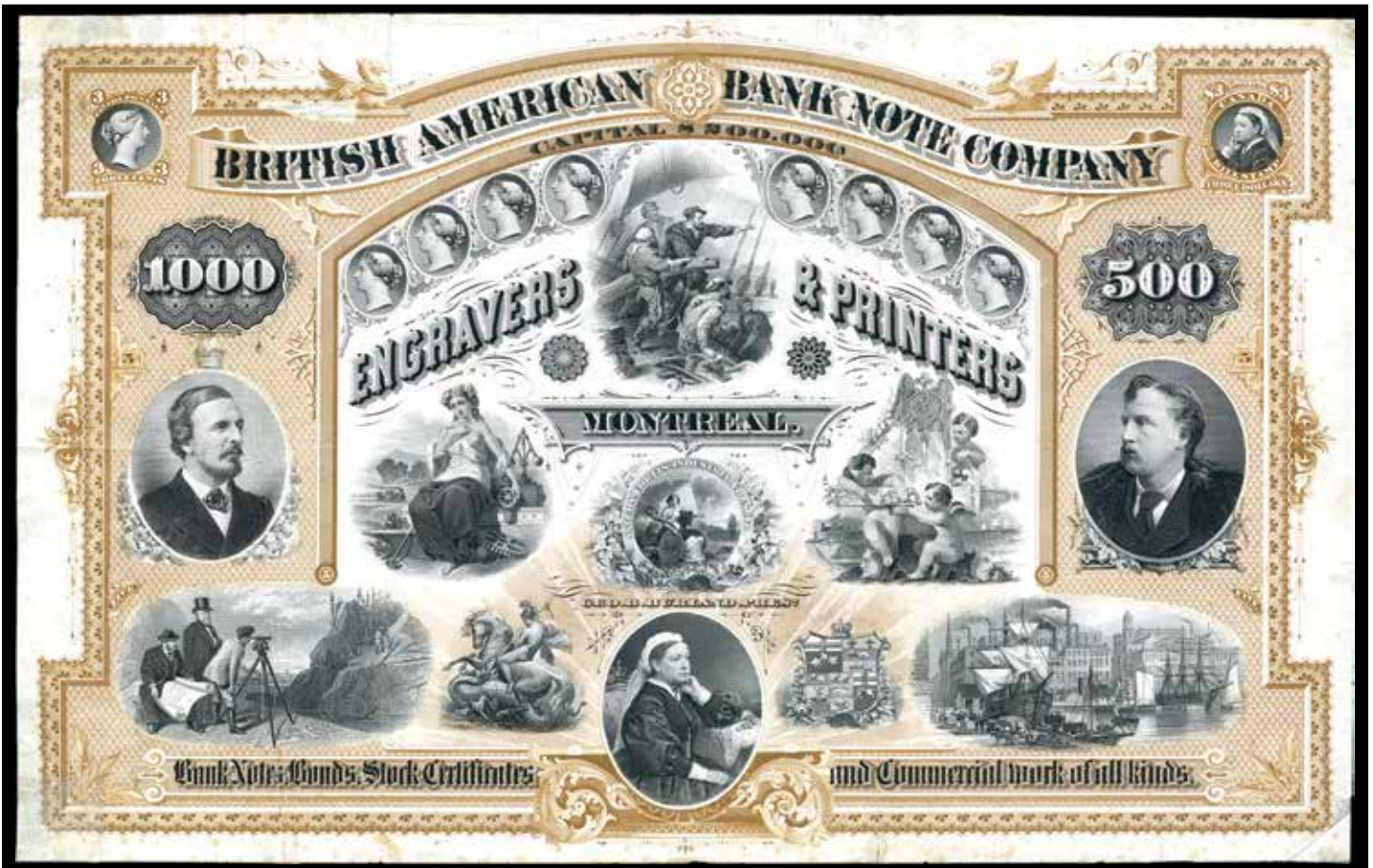
130



132



133



131

UCS Cat Val

- | | | | |
|-----|---|--|-------|
| 129 | P | 29P: FIFTEEN CENT: PLATE PROOF, BROWN PURPLE on india, very light bend at top otherwise very fine..... | 1000 |
| 130 | S | 30s: FIFTEEN CENT: with sans serif SPECIMEN. violet overprint, og, fine. Est. 300+..... | |

BRITISH AMERICAN BANK NOTE COMPANY

- | | | | |
|-----|---|---|-------|
| 131 | P | BRITISH AMERICAN BANK NOTE COMPANY: PROOF TRADE SAMPLE SHEET, GOLDEN BROWN and BLACK on india, (326x208mm), with various engraved portraits and vignettes. Portraits of Young Queen Victoria facing left used for the 1865 Federal Bill Revenue, another of Queen Victoria in Widow's Weeds used for 20¢ and 50¢ postage stamps. A composite coloured proof of the \$3 1868 Federal Bill revenue. A bicolour proof of the Three Cent Large Queen in GOLDEN BROWN with vignette in black. Some light foxing, folds and edge flaws, some restored, do not affect Three cent. A UNIQUE BICOLOURED PROOF OF THE LARGE QUEEN ISSUE. Est. 10000+..... | |
|-----|---|---|-------|

THE CANADA BANK NOTE ENGRAVING & PRINTING COMPANY

- | | | | |
|-----|---|--|-------|
| 132 | E | 35E-Aa: ONE CENT: DEEP YELLOW engraved plate essay on india, left margin INSCRIPTION copy, very fine. Est. 350+..... | |
| 133 | P | 35E-Aa: ONE CENT: DEEP YELLOW engraved plate essay on india on card, very fine Est. 250+..... | |



134



136



135

UCS Cat Val

- 134 P 35E-Aa: **ONE CENT**: DEEP YELLOW engraved plate essay on india, right margin **BLOCK OF FOUR** showing part of imprint, very fine. Est. 1500+.....
- 135 P 35E-Ac: **ONE CENT**: YELLOW lithographed plate essay **PAIR** on white wove glazed paper on card, very fine. Est. 500+.....
- 136 E 36E-A: **TWO CENT**: ORANGE YELLOW engraved **LARGE DIE ESSAY** (58x84mm), **DIE SUNK** on card (85x133mm) with purple **SAMPLE. PROOF-IMPRESSON**, very fine. RARE. 2013 Greene Cert. Est. 3000+.....



137



138



139



140

UCS Cat Val

- 137 P 36E-Ac var: **TWO CENT**: ORANGE engraved plate essay on thin Japanese paper, very fine. Est. 250+.....
- 138 P 36E-Ac: **TWO CENT**: ORANGE-RED engraved plate essay on india, slightly oxidized, fine. Est. 200+.....
- 139 P 36E-Ac: **TWO CENT**: BROWN engraved plate essay on india, very fine. Est. 200+.....
- 140 P 36E-Ac: **TWO CENT**: BROWN engraved plate essay on india, fine. Est. 200+.....



141



142



143



144



145



146



150



151



147



148



149

UCS Cat Val

141	P	36E-Ac: TWO CENT : YELLOWISH-GREEN engraved plate essay on india on card, very fine. Est. 200+.....
142	P	36E-Ac: TWO CENT : DARK GREEN engraved plate essay on india on card, very fine Est. 200+.....
143	P	36E-Ac: TWO CENT : LIGHT GREEN engraved plate essay on india, very fine Est. 200+.....
144	P	36E-Ac: TWO CENT : DEEP BLUE engraved plate essay on india, very fine. Est. 200+.....
145	P	36E-Ac: TWO CENT : DEEP BLUE engraved plate essay on india on card, very fine. Est. 200+.....
146	P	36E-Ac: TWO CENT : BLACK engraved plate essay on india, light wrinkles, appears very fine. Est. 200+.....
147	P	37E-Ab: THREE CENT : ORANGE engraved plate essay on india on card, LL corner margin copy, light mark to left of face, otherwise very fine. Est. 250+.....
148	P	37E-Ab: THREE CENT : ORANGE engraved plate essay on india on card, bottom margin copy, very fine. Est. 200+.....
149	P	37E-Ab: THREE CENT : ORANGE engraved plate essay on india, top margin pair showing AVING & PRINTING CO. LTD of imprint, very fine. Est. 500+.....
150	P	37E-Ad: THREE CENT : RED-ORANGE engraved plate essay on wove, very fine. Est. 200+.....
151	P	37E-Ad: THREE CENT : lighter RED-ORANGE engraved plate essay on wove, very fine. Est. 200+.....



152



154



153



155



156

UCS Cat Val

152	P	37E-Ad: THREE CENT : DARK NEUTRALGREY lithographed plate essay PAIR on white glazed paper, very fine. Est. 400+.....
153	P	37E-Ad: THREE CENT : DARK NEUTRALGREY lithographed plate essay BLOCK OF FOUR on white glazed paper, very fine. Est. 500+.....

SMALL QUEENS

154	P	35P: ONE CENT : PLATE PROOF , on card in colour of issue, very fine.....	600
155	P	35P: ONE CENT : DEFACED PLATE PROOF , PAIR in BLACK on wove paper, scarce and very fine.....	1200
156	P	36P: TWO CENT : DEFACED PLATE PROOF , PAIR in GREEN on wove paper, scarce and very fine	1200



157



158



159



160



161



162

UCS Cat Val

157	P	36P: TWO CENT: DEFACTED PLATE PROOF , left margin PAIR in BLACK on wove paper, scarce and very fine	1200
158	TC	38TC: FIVE CENT: TRIAL COLOUR PROOF , BRIGHT GREEN on india, 'stamp-size' very fine. RARE. 1984 Greene Cert. Est. 2500+
159	P	38P: FIVE CENT: PLATE PROOF , on card in colour of issue, light crease appears very fine.....	600
160	P	40P: TEN CENT: PLATE PROOF , on card in colour of issue, very fine	600
161	E	FIFTEEN CENT: UNISSUED DIE ESSAY , BLACK on india (26x30mm), very fine. (Minuse & Pratt E-1a) 2013 Greene Cert. Est. 3500+
162	E	FIFTEEN CENT: UNISSUED DIE ESSAY , BLACK on bond paper, (25x30mm), light wrinkle at left margin, still very fine. (Minuse & Pratt E-1b) Est. 2500+.....



163



164

UCS Cat Val

163	P	46P: TWENTY CENT: PLATE PROOF , on card in colour of issue, very fine	600
164	P	47P: FIFTY CENT: PLATE PROOF , on card in colour of issue, very fine	600

JUBILEES



UCS Cat Val

165 P 50P-65P: PLATE PROOFS, ½¢ to \$5 cpl on card in colours of issue, f-vf..... 3610



166



167

UCS Cat Val

166 DP 50DP: **HALF CENT: LARGE DIE PROOF**, BLACK, DIE SUNK (62x61mm) on card (122x98mm), otherwise very fine. Est. 1000+.....
 167 DP 53DP: **THREE CENT: TRIAL COLOUR LARGE DIE PROOF**, BLACK, on india, small tear at bottom and thin, appears very fine. Est. 750+.....



168



169

UCS Cat Val

- 168 DP 53DP: **THREE CENT: TRIAL COLOUR LARGE DIE PROOF**, GREEN, DIE SUNK (62x64mm) on card (127x101mm), adhesive marks on back, couple foxing spots, still very fine. Est. 1500+.....
- 169 DP 53DP: **THREE CENT: LARGE DIE PROOF**, BRIGHT ROSE, DIE SUNK (63x65mm) on card (127x101mm), adhesive marks on back, couple spots of adhesive on front, still very fine. Est. 1500+.....



170



171

UCS Cat Val

- 170 DP 53DP: **THREE CENT: LARGE DIE PROOF**, BRIGHT ROSE, DIE SUNK (62x64mm) on card (226x151mm), very fine. Est. 2000+.....
- 171 DP 53DP: **THREE CENT: LARGE TRIAL COLOUR DIE PROOF**, FOREST GREEN on india (68 x 55mm) showing partial original die sinkage at sides, light and immaterial diagonal corner crease top left (far away from design), probably unique, very fine. Ex Brigham. Est. 2000+.....
- 172 DP 54DP: **FIVE CENT: LARGE DIE PROOF**, DEEP BLUE, DIE SUNK (65x63mm) on card (226x151mm), very fine. Est. 2000+.....
- 173 S 59S: **TWENTY CENT: VERMILION**, with small bluish black sans serif **SPECIMEN** overprint, og, shallow thin from hinge removal, hr, o/w fine

300



172



173



174



175



176

UCS Cat Val

174	S	60S: FIFTY CENT : ULTRAMARINE, with small bluish black sans serif SPECIMEN overprint, og, hr, fine.....	300
175	S	61S: ONE DOLLAR : LAKE, with black sans serif SPECIMEN overprint, og, creased, hr, fresh, fine.....	400
176	S	62S: TWO DOLLAR : DARK PURPLE, with black sans serif SPECIMEN overprint, og, hr, fresh and very fine.....	800



177



178



179

UCS Cat Val

177	S	63S: THREE DOLLAR : YELLOW BISTRE, with violet sans serif SPECIMEN overprint, og, fresh and almost very fine.....	300
178	S	64S: FOUR DOLLAR : PURPLE, with violet sans serif SPECIMEN overprint, og, corner crease, small red back stamp, fresh and appears very fine.....	400
179	S	65S: FIVE DOLLAR : OLIVE GREEN, with violet sans serif SPECIMEN OVERPRINT , og, small hr, fresh and very fine.....	800
180	DP	LEAFS : 66DP-73DP: ½¢ to 10¢ complete TRIAL COLOUR DIE PROOFS , BLACK on india on card, very fine. RARE . Est. 7500+.....



180



UCS Cat Val

181 P 66P-73P: 1/2¢ to 10¢ complete **PLATE PROOFS**, on india on card in colour of issue, very fine.....

2000



UCS Cat Val

182 DP 73DP: **TEN CENT: LARGE DIE PROOF**, BROWN VIOLET, DIE SUNK on india (64x74mm) on card (150x228mm), with (Die #) **F-109**
AMERICAN BANK NOTE CO. OTTAWA imprint at bottom, very fine. Est. 750+.....

NUMERALS



UCS Cat Val

183 DP 74DP-84DP: 1/2¢ to 20¢ complete TRIAL COLOUR DIE PROOFS, BLACK on card, fresh, clean and very fine. RARE. Est. 7500+.....



UCS Cat Val

184 DP 74P/84DP: 1/2¢ to 20¢ complete **DEFACED DIE PROOFS** (no 2¢ carmine or 7¢), 'stamp-size' each with defacement marking in central oval above the denomination, all in colour of issue on india on card except the 5¢ (in deep violet) and the 20¢ (in bright apple green), very fine, quite probably unique. Ex Brigham. Est. 7500+.....



UCS Cat Val

185 P 74P-84P: 1/2¢ to 20¢ complete **PLATE PROOFS**, on india on card in colour of issue, very fine..... 4000



UCS Cat Val

- 186 S 74s-84s: 1/2¢ to 20¢, nine values almost complete (missing 1899 2¢ carmine and 5¢), each overprinted with matching large sans serif 'SPECIMEN' handstamp in black (by the receiving Postal Administration at a UPU conference), a few without gum, gum disturbed or creased, all appear f-vf. **VERY RARE.** 1977 BPA Cert. Ex Lindemann, Brigham. Est. 1500+.....



UCS Cat Val

- 187 S 74s/83s: 1/2¢ to 2¢ purple, 3¢, 6¢, 8¢ and 10¢ overprinted with medium-sized sans serif 'SPECIMEN' handstamp in black, no gum, **RARE.** Ex Brigham. Est. 750+.....



188

189

190

191

192

UCS Cat Val

- 188 S 74s: **HALF CENT:** BLACK, with unrecorded diagonal italic 'Specimen.' handstamp overprint in black by the receiving Postal Administration, disturbed gum, and some gum penetration, appears fine. 1975 BPA Cert. Ex Brigham. Est. 300+.....
- 189 S 75s: **ONE CENT:** GREEN, with unrecorded diagonal italic 'Specimen.' handstamp overprint in black by the receiving Postal Administration, disturbed gum, and some gum penetration, appears fine. Ex Brigham. Est. 300+.....
- 190 S 76s: **TWO CENT:** PURPLE, with unrecorded diagonal italic 'Specimen.' handstamp overprint in black by the receiving Postal Administration, disturbed gum, and some gum penetration, appears fine. Ex Brigham. Est. 300+.....
- 191 S 78s: **THREE CENT:** CARMINE, with unrecorded diagonal italic 'Specimen.' handstamp overprint in black by the receiving Postal Administration, disturbed gum, and some gum penetration, appears fine. Ex Brigham. Est. 300+.....
- 192 S 80s: **SIX CENT:** BROWN, with unrecorded diagonal italic 'Specimen.' handstamp overprint in black by the receiving Postal Administration, disturbed gum, and some gum penetration, appears fine. Ex Brigham. Est. 300+.....



193



194



195

UCS Cat Val

- 193 S 82s: **EIGHT CENT**: ORANGE, with unrecorded diagonal italic '**Specimen.**' handstamp overprint in black by the receiving Postal Administration, disturbed gum, and some gum penetration, appears fine. 1975 BPA Cert. Ex Brigham. Est. 300+.....
- 194 TC 83: **TEN CENT**: **TRIAL COLOUR PROOF**, REDDISH VIOLET on wove paper, perforated and gummed, fine. **RARE**. Est. 500+.....
- 195 DP **UNISSUED** 4¢, 15¢, and 50¢ **TRIAL COLOUR DIE PROOFS**, BLACK on card, fresh, clean and very fine. **VERY RARE**. Est. 5000+....



196



197



198



199

UCS Cat Val

- 196 E **UNISSUED FIFTEEN CENT DIE ESSAY**: GREY BLACK on india on card, 'stamp-size', very fine. Scarce. Est. 1500+.....
- 197 E **EDWARDS**: 89E: 1¢ **PLATE ESSAY**, DARK GREY on white wove paper, og, very fine. (Minuse & Pratt 89E-Ag). Est. 250+.....
- 198 E 89E: 1¢ **PLATE ESSAY**, PAIR in ROSE on white wove paper, og, light wrinkling at right appears very fine. (Minuse & Pratt 89E-Ag). Est. 350+.....
- 199 E 89E: **ONE CENT**, Large Perkins Bacon **DIE ESSAY** in BLACK on thin card (69x94mm), showing die sinkage on three sides, scarce and very fine. Est. 2000+.....



UCS Cat Val

200 DP **QUEBEC**: 96DP-109DP: ½¢ to 20¢ complete set of **LARGE DIE PROOFS**, DIE SUNK on india on card (230x152mm) 1¢ and 5¢ cards trimmed, all with die number and **AMERICAN BANK NOTE CO. OTTAWA** imprint at bottom, very fine. Est. 7500+.....

ADMIRALS



201



202

UCS Cat Val

- 201 DP 106DP: **TWO CENT: LARGE DIE PROOF, DIE SUNK** on india (62x61mm) on card (151x229mm) in colour of issue, (Die #) F-211, paper thinned, with (AMERICAN BANK NOTE CO. (OTTAWA) imprint at bottom, card creases and rounded corners, still RARE. Est. 1500+
- 202 DP 110DP: **FOUR CENT: LARGE DIE PROOF, OLIVE BISTRE, DIE SUNK** on india (77x72mm) on card (135x135mm) with (Die #) **O-G-426**, very fine and RARE. Est. 2000+.....



203



204

UCS Cat Val

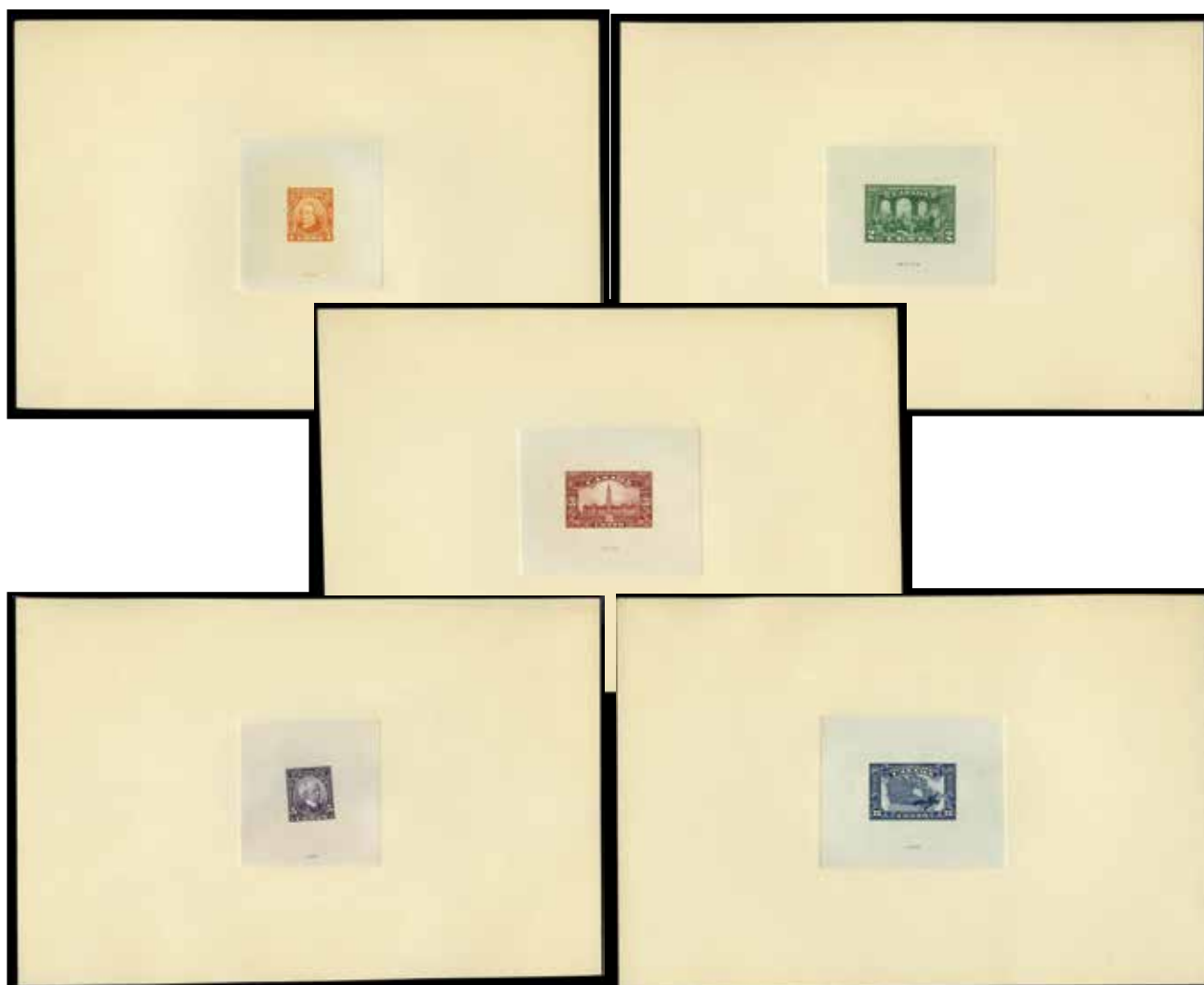
- 203 DP 115DP: **EIGHT CENT: LARGE DIE PROOF, BLUE, DIE SUNK** on india (76x77mm) on card (125x125mm) with (Die #) **XG-91** at top, very fine and RARE. Est. 2000+.....
- 204 DP 120aDP: **FIFTY CENT: LARGE DIE PROOF, BLACK BROWN, DIE SUNK** on india (60x73mm) on card (125x125mm) with **AMERICAN BANK NOTE CO. OTTAWA** imprint at bottom, very fine and RARE. Est. 3000+.....

1917 CONFEDERATION TO MODERN



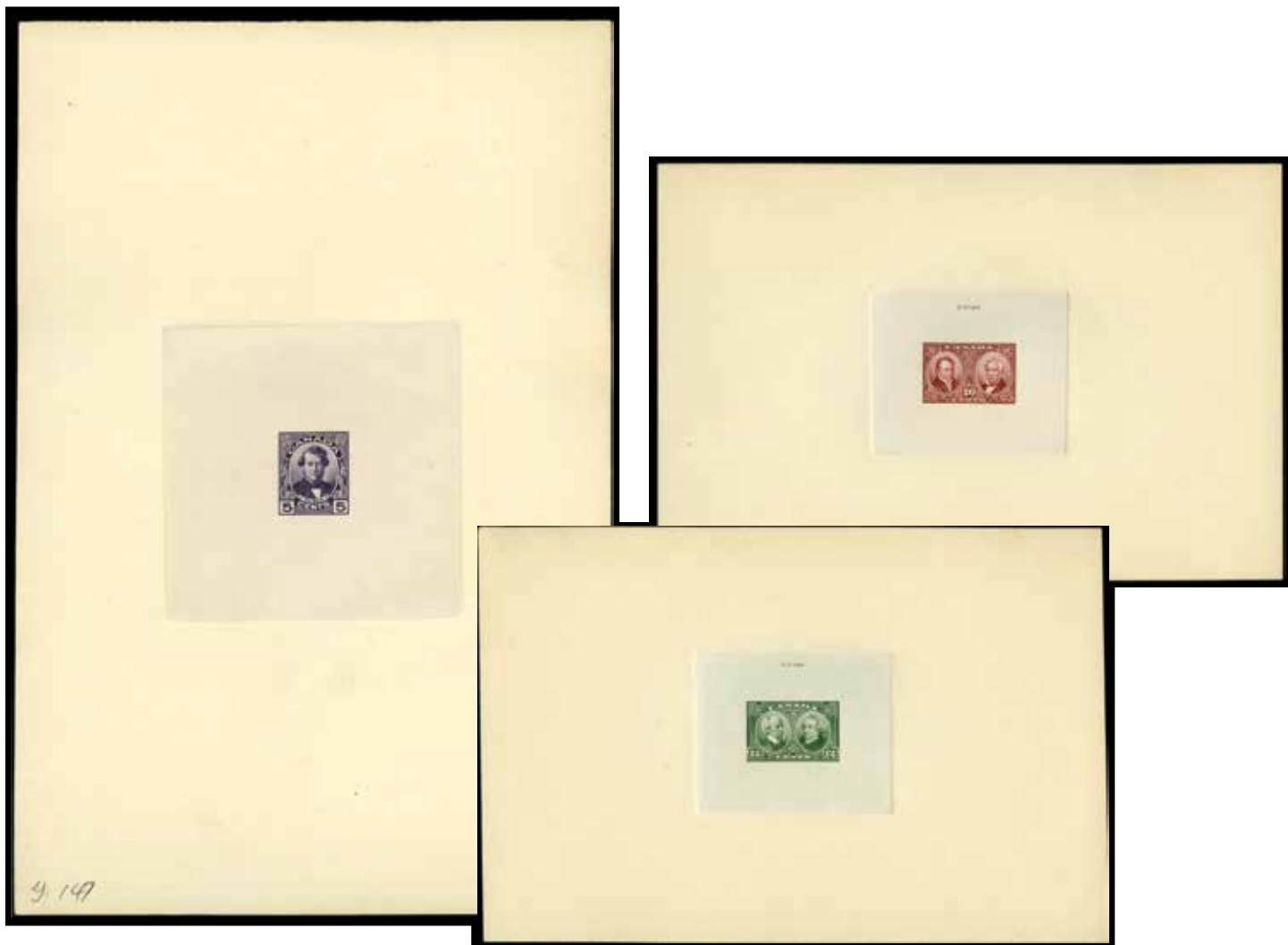
UCS Cat Val

205 E 1914 UNISSUED MacDONALD-CARTIER engraved DIE ESSAYS, BLACK, 'stamp-size' on card, very fine. SHOWPIECE. (Minuse & Pratt E-1c to E-7c). Est. 7500+.....



UCS Cat Val

206 DP 1927 CONFEDERATION: 141DP-145DP: 1¢ to 12¢ complete in LARGE DIE PROOFS, DIE SUNK on india on card (229x153mm), very fine. Est. 2500+.....



UCS Cat Val

207 P **1927 HISTORICAL:** 146P-148P: Complete in **LARGE DIE PROOFS**, DIE SUNK on india on card in colour of issue, 5¢ no Die #, 12¢ **X-G-148**, and 20¢ **X-G-149**, very fine. Est. 2000+.....



UCS Cat Val

208 DP **1927 HISTORICAL UNISSUED TEN CENT:** **LARGE DIE PROOF**, GREEN, DIE SUNK on india (88x75mm) on card (164x153mm), (Die #) **X-G-148**, with pencil notation "Do not give out issued as 12¢, very fine. Est. 1000+.....



UCS Cat Val

209 DP **SCROLL ISSUE:** 149DP-157DP,159DP: 1¢ to \$1 in **LARGE DIE PROOFS**, missing 50¢, DIE SUNK on india on card in colour of issue, 2¢, and 10¢ to \$1 without Die #, 1¢ **CANADA X-G-197**, 3¢ **CANADA X-G-198**, 4¢ **CANADA X-G-215**, 5¢ **CANADA X-G-199**, 8¢ **CANADA X-G-200**, very fine. Est. 5000+.....



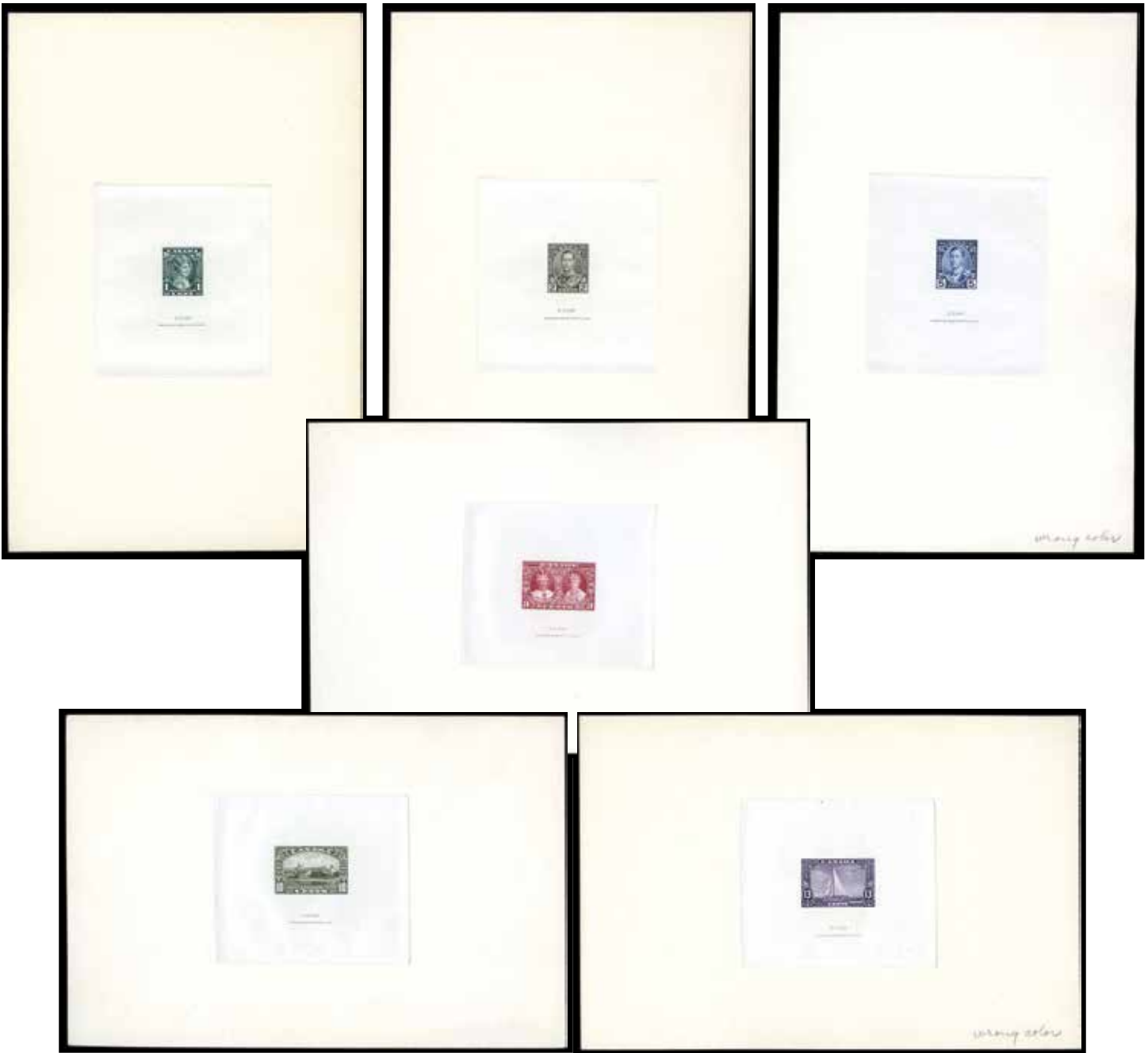
UCS Cat Val

210 P 149P-159P: 1¢ to \$1 complete in left margin **PLATE PROOF PAIRS**, on india in colour of issue, fresh, very fine..... 5000



UCS Cat Val

211 DP 204DP: **LARGE PROGRESSIVE DIE PROOF**, DARK GREEN-BLUE on glazed white wove paper with guidelines, couple light bends, still very fine. (Minuse & Pratt 204PX-Aa). Est. 500+.....



UCS Cat Val

212 DP **1935 SILVER JUBILEE:** 211DP-216DP: Complete in **LARGE DIE PROOFS**, DIE SUNK on card (226 to 230x152), Die # **X-G-588** to **X-G-593**, 2¢, 3¢, 5¢, and 13¢ noted 'wrong color' in pencil at LR, very fine. Est. 3000+.....



UCS Cat Val

213 P 211P-216P: 1¢ to \$1 complete in **PLATE PROOFS PAIRS**, on india on card in colour of issue..... 1500



214



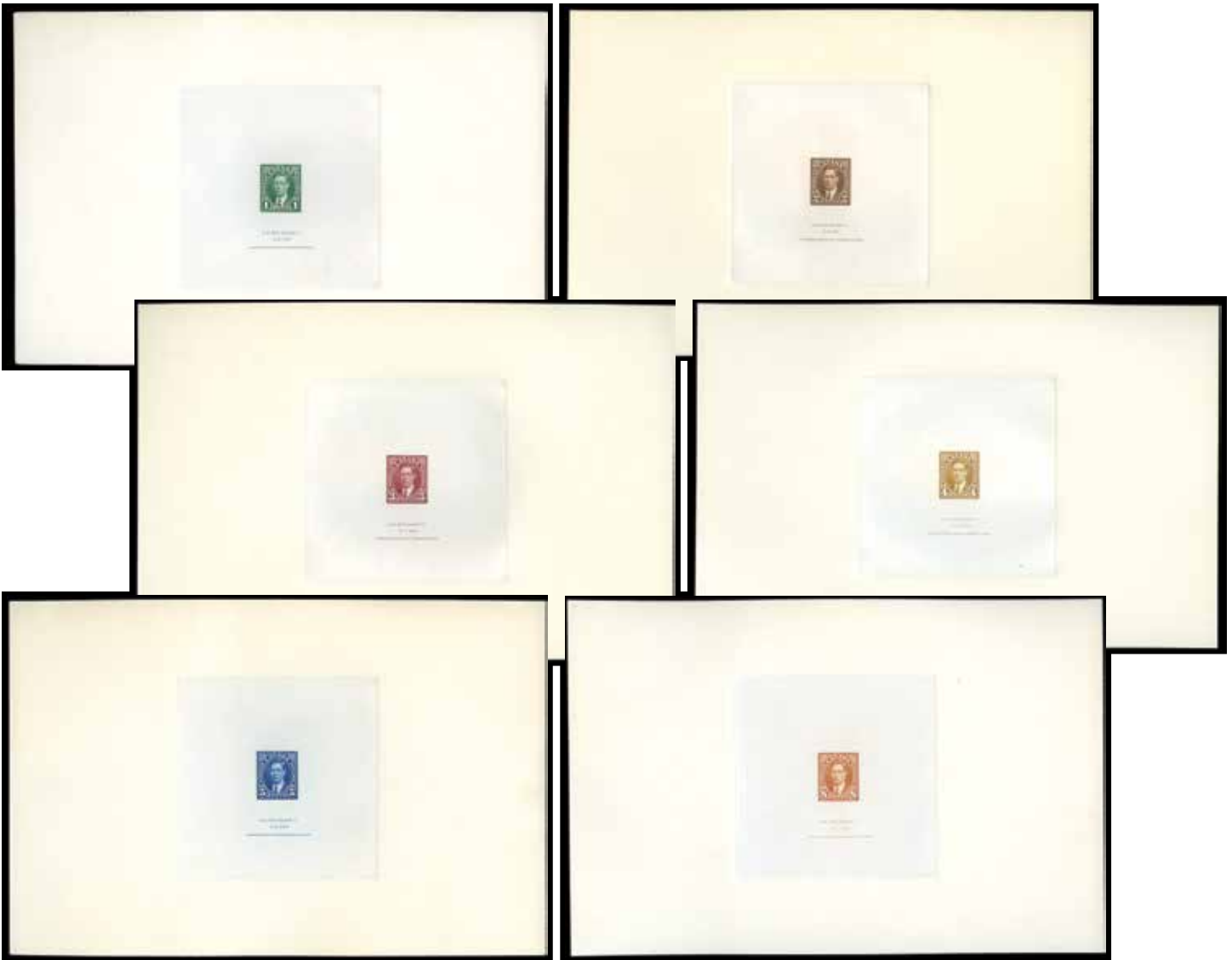
216

UCS Cat Val

- 214 DP c.1934 Late George V Portrait **LARGE DIE PROOF**, BLACK, DIE SUNK on india (88x100mm) on card (152x228mm), appears to have been used for 1935 Pictorial Issue, pencil notations well away from portrait incl Aug. 9/34 and XV-114, very fine. Est. 350+.....
- 215 P **1935 MAPLE LEAF**: 217P-222P: 1¢ to 8¢ complete in **PLATE PROOFS**, on india on card in colour of issue, very fine..... 1800
- 216 DP 219P: 3¢ **LARGE DIE PROOF**, DIE SUNK on india (76x80mm) on card (91x114mm) in colour of issue, with (Die No) **X-G-579** and **CANADIAN BANK NOTE CO LTD** imprint at bottom, very fine. Est. 500+.....



215



UCS Cat Val

- 217 DP 231P-235P: GEORGE V MUFTI ISSUE: **LARGE DIE PROOFS** 1¢ to 5¢ complete in colours of issue, DIE SUNK (approx 87x87mm) on cards (approx 200x155mm), very fine. **VERY RARE**. Est. 3000+.....
- 218 DP 237P: 3¢ Coronation **LARGE DIE PROOF**, DIE SUNK on india (99x89mm) on card (231x153mm) in colour of issue with (Die #) **X-G-663** and full **CANADIAN BANK NOTE COMPANY, LIMITED**. imprint, scarce and very fine. Est. 500+.....





219



220

UCS Cat Val

- 219 DP 237DP: 3¢ Coronation **LARGE DIE PROOF**, DIE SUNK on india (101x89mm) on card (228x152mm) in BRIGHT ROSE with (Die #) **X-G-663** and full **CANADIAN BANK NOTE COMPANY, LIMITED** imprint, scarce and very fine. Est. 500+.....
- 220 DP 241DP: 10¢ Dark Carmine **LARGE DIE PROOF**, DIE DUNK (76x88mm) on card (229x154mm) in colour of issue, with (Die #) **XG-675** and **CANADIAN BANK NOTE COMPANY, LIMITED** imprint, very fine. Est. 750+.....



221



222

UCS Cat Val

- 221 P 241aP/245P: 1938 PICTORIAL ISSUE 10¢ to \$1 in **PLATE PROOF BLOCKS OF FOUR**, on india on card, 13¢ does not exist, 10¢ separated as card was folded, \$1 bottom pair creased, appears very fine. Blocks are rare..... 2400
- 222 P 241aP,243P-245P: 10¢, 20¢, 50¢ and \$1 in **PLATE PROOF GUTTER STRIPS OF FOUR**, on india on card in colour of issue (13¢ does not exist), very fine and **RARE**. (Catalogue Value is half that shown for gutter blocks of eight)..... 3000



223



224

UCS Cat Val

- 223 TC 243P: 20¢ Fort Garry **LARGE TRIAL COLOUR DIE PROOF**, in GREEN, DIE SUNK (85x74mm) on card (227x152mm) with **XG-677** imprint, crease UL corner of card only, still very fine and RARE. Est. 750+.....
- 224 TC 245P: \$1 Ramezay **LARGE TRIAL COLOUR DIE PROOF**, in BLUE, DIE SUNK (89x76mm) on card (227x152mm) with **CANADIAN BANK NOTE COMPANY, LIMITED** imprint and (Die #) **XG-679**, light (negligible) bend at left, still very fine and RARE. Est. 1000+.....



225



226

UCS Cat Val

- 225 E 4¢ **INDIAN HEAD ESSAY**, LR corner margin pair, full og, nh, very fine. Est. 200+.....
- 226 E 4¢ **INDIAN HEAD ESSAY**, complete sheet of 25, full og, nh, very fine. Est. 1500+.....



227



228



229

UCS Cat Val

- 227 DP 293DP: 5¢ GEORGE VI without Postes Postage, cut down **DIE PROOF** (30x42mm) on wove paper on card in colour of issue, very fine. Est. 200+.....
- 228 DP 293DP: 5¢ GEORGE VI without Postes Postage, **DIE PROOF**, **DIE SUNK** on wove paper (73x74mm) on card (102x102mm) in colour of issue with (Die #) **X G 881** at top and **CANADIAN BANK NOTE COMPANY, LIMITED.** at bottom, very fine. Est. 300+.....
- 229 DP 293DP: 5¢ GEORGE VI without Postes Postage, **DIE PROOF**, **DIE SUNK** on wove paper (75x73mm) on card (151x228mm) in colour of issue with (Die #) **X G 881** at top and **CANADIAN BANK NOTE COMPANY, LIMITED.** at bottom and light pencil '27/49' and 'Last', some staple holes, still very fine. Est. 350+.....



230



231



232

UCS Cat Val

- 230 E 5¢ **UNISSUED WOOD DUCKS ESSAY** multi-coloured, engraved on wove paper, "SPECIMEN POSTAGE" inscription, four PROGRESSIVE, in YELLOW (creased), YELLOW and RED, YELLOW (shifted down) showing registry markings at top, and final one creased at top margin, RED, BLUE, very scarce. Est. 500+.....
- 231 E 1950s era engraved **LARGE DIE ESSAY**, **DIE SUNK** on india (93x128mm) on card (155x149mm) with 'CHERUB', (Die #) **V-12** and **CANADA BANK NOTE CO. MONTREAL** imprint, staple holes in UL corner of card and tiny adhesive stain in LR corner of proof, still very fine and scarce. Est. 150+.....
- 232 DP 316: 20¢ FORESTRY **LARGE DIE PROOF**, GREY on card (75x69mm), very fine and RARE. Est. 500+.....



233



234



235



236



237



238

UCS Cat Val

233	DP	316P: 20¢ FORESTRY LARGE DIE PROOF , GREY (78x74mm) mounted on card (140x102mm), very fine. Est. 500+.....
234	P	328P: 4¢ 1953 KARSH DIE PROOF , (54x60mm) on glossy paper mounted on card in colour of issue, a few spots in margin and card, still very fine.....	1500
235	DP	334DP: 50¢ TEXTILE LARGE DIE PROOF , (86x64mm) on glazed paper with (Die #) XG-979 and CANADIAN BANK NOTE COMPANY, LIMITED imprint, mounted on large card (141x114mm), a few spots, still very fine. Est. 200+.....
236	DP	334P: 50¢ TEXTILE LARGE TRIAL COLOUR DIE PROOF , DIE SUNK (88x65mm) on card (124x112mm), in BRIGHT ROSE, without imprint or Die markings, very fine. Est. 500+.....
237	DP	343DP: 15¢ Gannet, LARGE DIE PROOF , on card (63x61mm) in colour of issue, from the hardened state with (Die #) XG-1027 and full CANADIAN BANK NOTE COMPANY LIMITED . imprint, very fine and RARE. Est. 500+.....
238	E	SPECIMEN 2¢ RED-WINGED BLACKBIRD: LARGE DIE PROOF ESSAY , BLACK on wove paper (120x126mm) DIE SUNK (87x75mm), (Die #) 1142-C at top, very RARE and quite possibly UNIQUE. Ex Brigham. Est. 500+.....



239



240

UCS Cat Val

- 239 E **SPECIMEN 2¢ RED-WINGED BLACKBIRD: PROGRESSIVE DIE PROOF ESSAY**, BLACK on wove paper, showing complete design, two central vignettes with 1142-A YELLOW and 1142-B RED and another complete with 1142-C BLACK, VERY RARE. Est. 350+
- 240 DP **BRITISH AMERICAN BANK NOTE COMPANY: 1866-1966 CENTENNIAL Souvenir Stamp LARGE DIE PROOF** on india (132x96mm), (Die #) **1242** at top, creased LL, otherwise very fine, signed in pencil LR, still very fine. Est. 250+.....

AIRMAIL ISSUES



241



242



245



243



244

UCS Cat Val

- 241 P C1P: 1928 5¢ brown olive, **PLATE PROOF PAIR** on india, light bend, appears very fine. (Only 600 exist)..... 400
- 242 P C1P: 1928 5¢ brown olive, bottom margin **PLATE PROOF BLOCK OF FOUR** on india, very fine. (Only 600 exist) 800
- 243 DP C5P: 1935 6¢ **LARGE DIE PROOF**, DIE SUNK (84x75mm) on card (228x152mm) in colour of issue, (Die #) **X-G-585** and **CANADIAN BANK NOTE CO. LTD.** imprint, very fine. **VERY RARE**. Est. 1500+.....
- 244 DP C6P: 1938 6¢ **LARGE DIE PROOF**, RED BROWN, DIE SUNK (89x75mm) on card (228x152mm), (Die #) **XG-674** and **CANADIAN BANK NOTE CO. LTD.** imprint, very fine. **RARE**. Est. 750+.....
- 245 DP **AIR MAIL SPECIAL DELIVERY: CE3: 17¢** bright ultramarine, with **É**, Canadian Bank Note security punch cancelled archival **DIE PROOF**, 'stamp-size', on india mounted on card and affixed to manila archival card, very fine. Est. 350+.....

SEMI-OFFICIAL AIRMAIL PROOFS



246



247

UCS Cat Val

- | | | | |
|-----|---|--|-----|
| 246 | P | YUKON AIRWAYS AND EXPLORATION CO. LTD.: CL42P: REVERSE PROOF , very fine..... | 450 |
| 247 | P | YUKON AIRWAYS AND EXPLORATION CO. LTD.: CL42P: REVERSE PROOF , very fine..... | 450 |



UCS Cat Val

- | | | | |
|-----|---|--|------|
| 248 | P | COMMERCIAL AIRWAYS LTD.: CL47P: (10¢) VIA AIR PROOFS on white paper, six colours all LL corner margin copies, small in margin on orange one, still very fine..... | 2400 |
|-----|---|--|------|

SPECIAL DELIVERY PROOFS



249



250

UCS Cat Val

- 249 DP E3P: 1927 20¢ **LARGE DIE PROOF**, DIE SUNK (59x69mm) on card (228x152mm) in colour of issue, (Die #) **XG-177** and **CANADIAN BANK NOTE CO. LTD.** imprint, card creased at left and rounded corners, still appears very fine. **RARE**. Est. 750+.....
- 250 DP E6P: 1935 20¢ **LARGE DIE PROOF**, CARMINE ROSE, with pencil annotation "wrong color" LR, DIE SUNK (94x89mm) on card (229x151mm), (Die #) **X-G-586** and **CANADIAN BANK NOTE CO. LTD.** imprint, very fine. **RARE**. Est. 750+.....



251



252

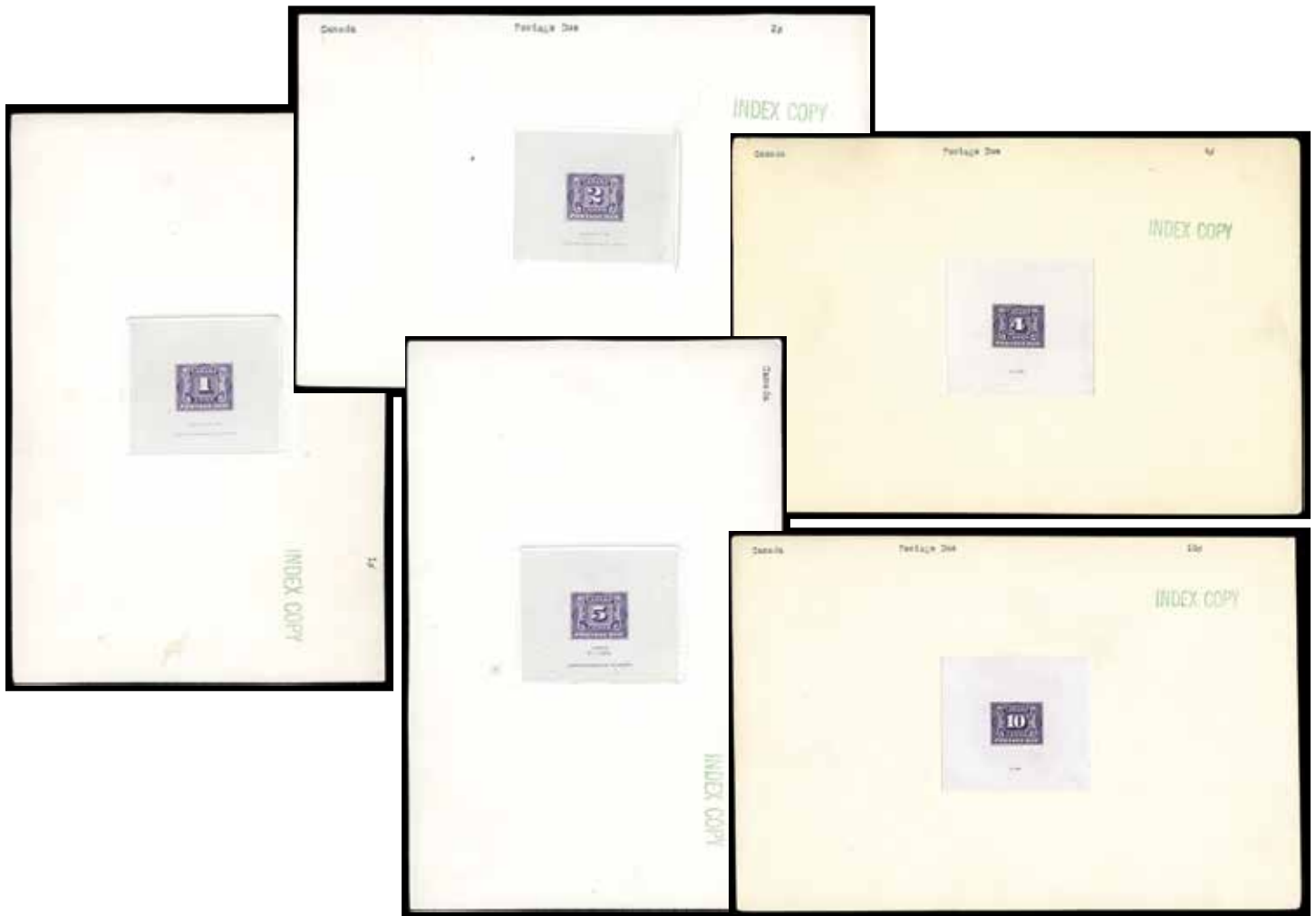
UCS Cat Val

- 251 DP E6P: 1935 20¢ **LARGE DIE PROOF**, DIE SUNK (94x88mm) on card (228x151mm) in colour of issue, (Die #) **X-G-586** and **CANADIAN BANK NOTE CO. LTD.** imprint, card with mounting holes around edge, light crease on card, otherwise very fine. Est. 750+.....
- 252 DP E8P: 1938 20¢ **LARGE DIE PROOF**, DIE SUNK (112x86mm) on card (199x152mm) in colour of issue, (Die #) **X-G-673** and **SPECIAL DELIVERY** imprint, very fine. **RARE**. Est. 1000+.....
- 253 P **REGISTERED LETTER STAMP**: F2P: **FIVE CENT**: **PLATE PROOF**, GREEN, on india on card, very fine..... 1000



253

POSTAGE DUE PROOFS

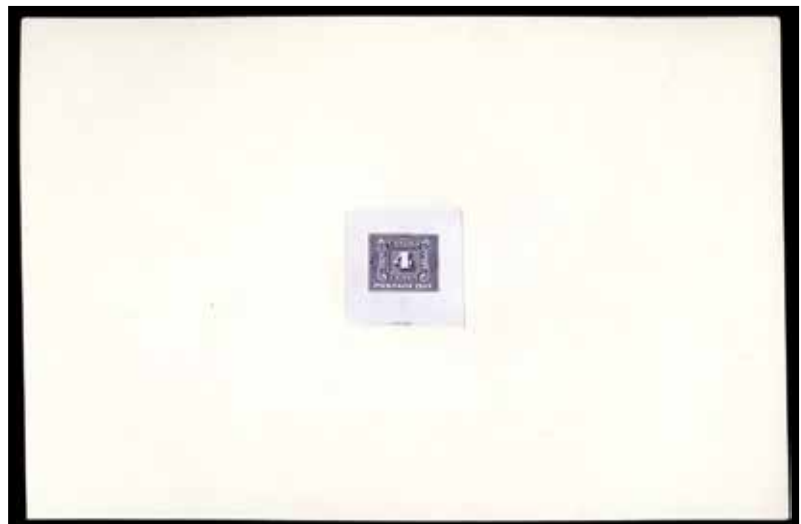


UCS Cat Val

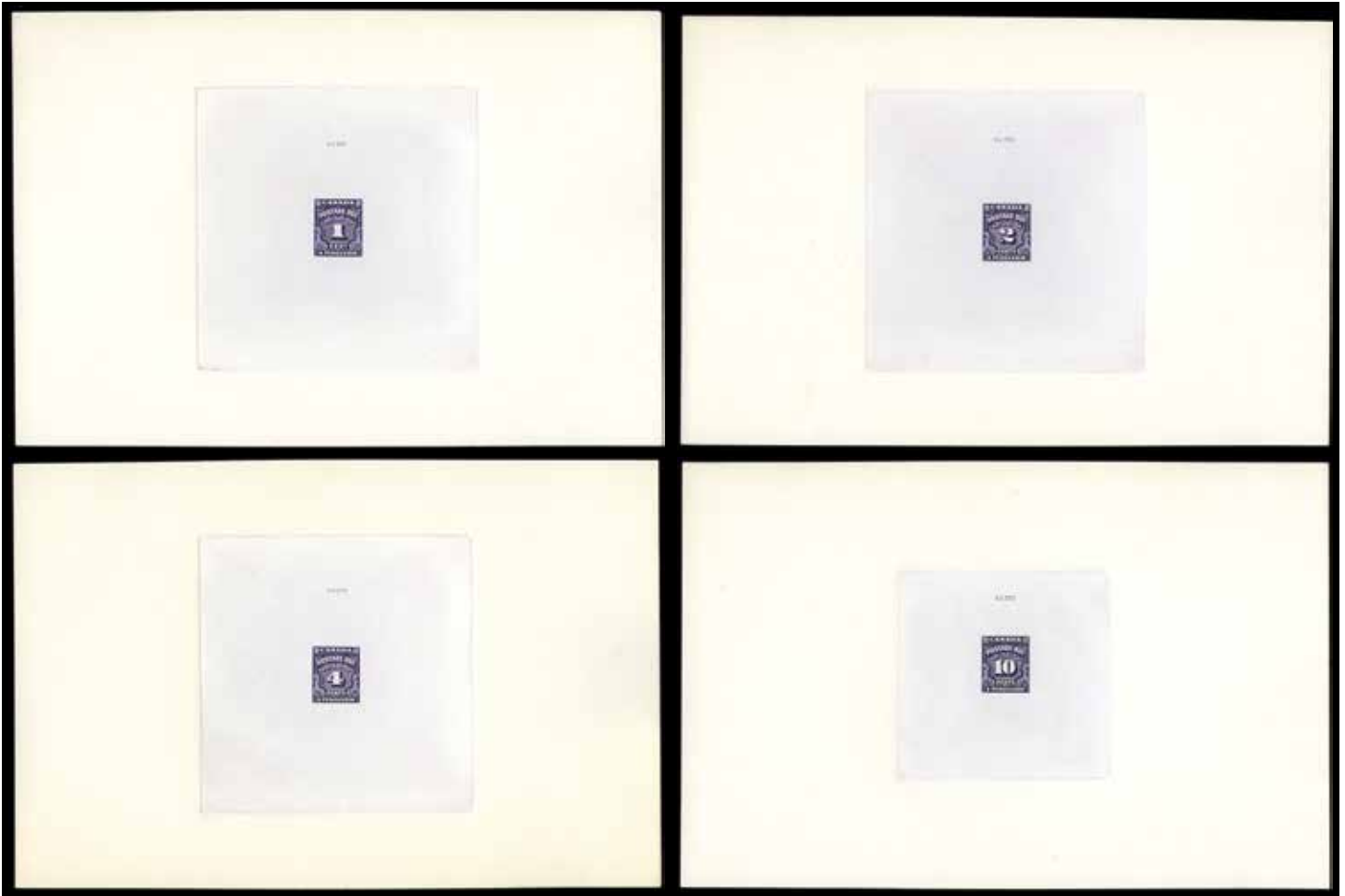
- 254 DP J1P-J5P: 1906-1928 **DIE PROOFS** in colour of issue, 1¢ (Die #) **CANADA-F-182**, 2¢ (Die #) **CANADA-F-181**, 4¢ (Die #) **X-G-188**, 5¢ (Die #) **CANADA-F-180** and 10¢ (Die #) **X-G-189**, 1¢, 2¢ and 5¢ with **AMERICAN BANK NOTE CO. OTTAWA** imprint at bottom, all DIE SUNK on india on cards with green "INDEX COPY" rubber stamp and typewriter identification at top, very fine. **VERY RARE**. Est. 7500+
- 255 DP J1P, J2P, J4P: 1906 **DIE PROOFS** in GREEN, 1¢ (Die #) **CANADA-F-182**, 2¢ (Die #) **CANADA-F-181**, and 5¢ (Die #) **CANADA-F-180**, all with **AMERICAN BANK NOTE CO. OTTAWA** imprint at bottom, on india, 10¢ wrinkle UL corner, still very fine. **VERY RARE**. Est. 5000+
- 256 DP J3P: 1928 4¢ **LARGE DIE PROOF**, DIE SUNK (34x34mm) on card (228x152mm) in colour of issue, (Die #) **X-G-188**, with guide line above and below design, very fine. **VERY RARE**. Est. 1500+



255



256



UCS Cat Val

257 DP J15P, J16P, J17P, J20P: 1935 **LARGE DIE PROOFS** in colour of issue, 1¢ (Die #) **XG 577**, 2¢ (Die #) **XG 576**, 4¢ (Die #) **XG 578**, and 10¢ (Die #) **XG 572**, original four, DIE SUNK (75-99x75-100mm) on india on card (230-232x152-154mm), extremely fine. **VERY RARE**. Est. 2500+.....

OFFICIALLY SEALED PROOFS



258



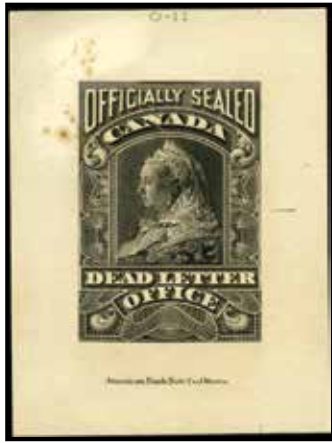
259



260

UCS Cat Val

258	P	OX1P: 1879 PLATE PROOF , BROWN on india, very fine.....	600
259	P	OX1P: 1879 PLATE PROOF , BROWN on india on card, very fine.....	600
260	P	OX1P: 1879 PLATE PROOF , BROWN on india, showing nk Note Co Montreal of imprint at right, very fine.....	600+



261



262

UCS Cat Val

- 261 DP OX2: Victoria 1902 **LARGE DIE PROOF**, (58x75mm) on faint yellow card, with (Die #) **O-11** at top and **American Bank Note Co. Ottawa.** imprint at bottom, some age spots UL other appears very fine. Est. 750+.....
- 262 P OX4P: 1913 **PLATE PROOF**, BROWN BLACK, on india on card, very fine..... 800

FEDERAL REVENUE PROOFS



UCS Cat Val

- 263 P **BILL STAMPS**: FB33P, FB35P, FB36: **1865 SECOND ISSUE \$1 to \$3 TRIAL COLOUR PLATE PROOFS** on india, \$1 GREEN and BLACK on card, \$1 GREEN and LIGHT VIOLET, \$2 BROWN and BLACK, \$2 VERMILION and LIGHT BROWN, \$2 BLUE and BLACK, and \$3 YELLOW BROWN with BLUE, very fine. Est. 500+.....



264

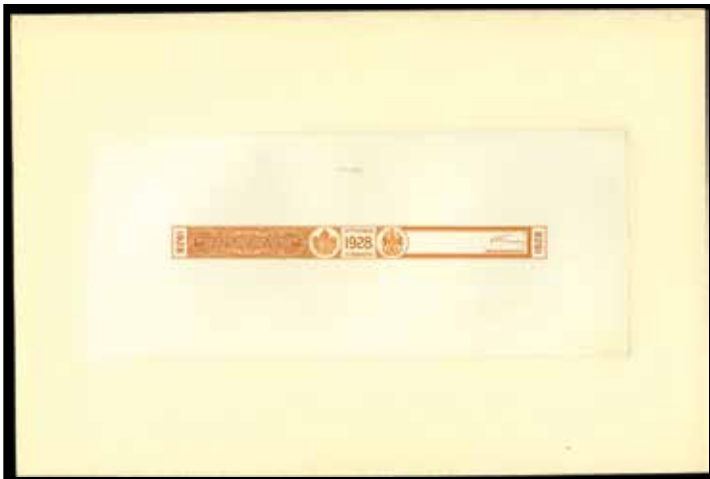


265

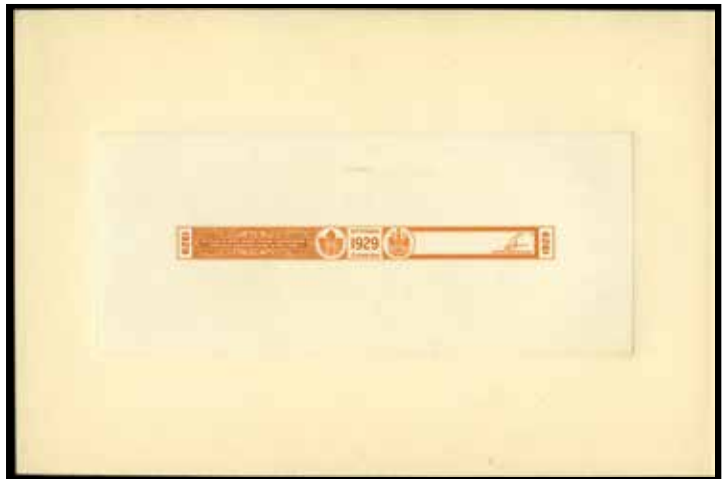
UCS Cat Val

- 264 DP **WEIGHTS & MEASURES**: FWM65P: 50¢ George V **LARGE DIE PROOF**, BLACK, DIE SUNK (75x108mm) on card (153x229mm) with (Die #) **XG-326**, light corner bends UR and LL - negligible, scarce and very fine. Est. 150+.....
- 265 DP **CUSTOMS DUTY**: FCD3P: 1912 5¢ **LARGE DIE PROOF**, DIE SUNK on india (70x65mm) on card (178x110mm) in colour of issue, pencil notation (Die #) **O.G. 55.** below, scarce and very fine. Est. 750+.....

LIQUOR ISSUE PROOFS



266



267

		UCS Cat Val
266	DP BOTTLE SEAL: OTTAWA 1928 orange, engraved DIE SUNK PROOF (176x74mm) on india on card (228x153mm), with (Die #) X-G-466 , very fine and scarce. Est. 300+.....
267	DP BOTTLE SEAL: OTTAWA 1929 orange, engraved Canada Bank Note Company DIE SUNK PROOF (175x73mm) on india on card (229x153mm), with (Die #) X-G-467 , very fine and scarce. Est. 250+.....
268	DP BOTTLE SEAL: OTTAWA 1928 blue, engraved LARGE DIE SUNK PROOF (151x61mm) on india on card (229x153mm), with (Die #) XG-471 , very fine and scarce. Est. 250+.....
269	DP BOTTLE SEAL: OTTAWA 1928 blue, engraved LARGE DIE SUNK PROOF (152x61mm) on india on card (230x154mm) with (Die #) XG-471 , very fine.....



268



269

TOBACCO ISSUE PROOFS



270



271

UCS Cat Val

- 270 DP **CIGARETTES:** 1897 FIFTY CIGARETTES **LARGE DIE PROOF**, BLACK, DIE SUNK (161x77mm) on card (189x110mm), with (Die #) **CANADA-F-254** imprint at top and **AMERICAN BANK NOTE CO. OTTAWA** at bottom, trimmed at right, appears very fine. Est. 150+
- 271 DP **TOBACCO TAX: ONE EIGHTH POUND TOBACCO** (Series A) **LARGE DIE PROOF**, BLACK, on india (156x19mm) on card (229x96mm), very fine. Est. 200+.....



272



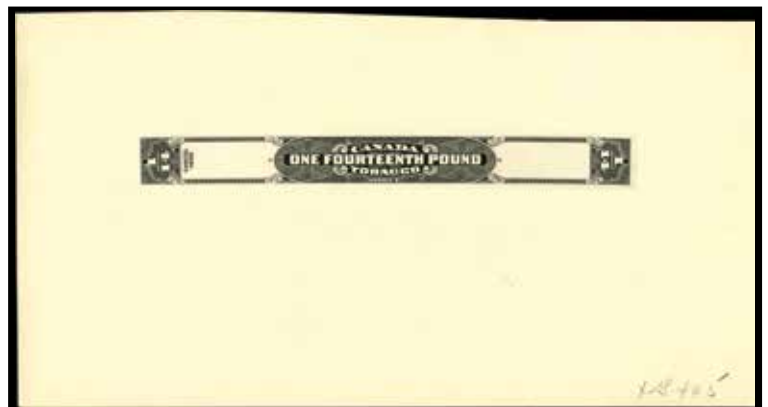
273

UCS Cat Val

- 272 DP **TOBACCO TAX: ONE EIGHTH POUND TOBACCO** (Series A) **LARGE DIE PROOF**, BLACK, DIE SUNK on india (206x76mm) on card (230x153mm), with (Die #) **X-G-214** at top, card with small tears at top still scarce and very fine. Est. 200+.....
- 273 DP **TOBACCO TAX: TWO FIFTEENTHS POUND TOBACCO** (Series A) **LARGE DIE PROOF**, BLACK, DIE SUNK on india (157x20mm) in on card (230x153mm), with Die # 'X-G-436' penciled in at LR, very fine. Est. 200+.....



274



275

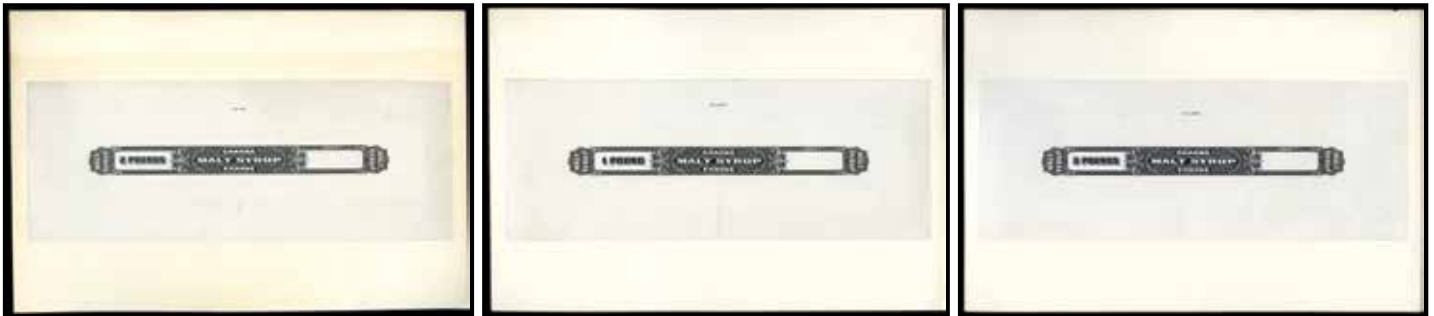
UCS Cat Val

- 274 DP **TOBACCO TAX: ONE FIFTEENTH POUND TOBACCO** (Series B) **LARGE DIE PROOF**, BLACK, on india (154x18mm) on card (229x153mm), with Die # 'XG 341' penciled in at bottom, scarce and very fine. Est. 200+.....
- 275 DP **TOBACCO TAX: ONE FOURTEENTH POUND TOBACCO** (Series B) **LARGE DIE PROOF**, BLACK, on india (155x19mm) on card (228x133mm), with Die # 'XG 405' penciled in at bottom, scarce and very fine. Est. 200+.....



UCS Cat Val

276 DP **TOBACCO TAX: TWO FIFTEENTHS POUND TOBACCO** (Series A) **LARGE DIE PROOF**, BLACK, DIE SUNK on india (95x125mm) on card (198x154mm) with (Die #) **XG-519** above design, very fine. (Ryan - RN5) Est. 100+.....



UCS Cat Val

277 DP **MALT SYRUP EXCISE: 1934 LARGE DIE PROOFS**, BLACK, (Series A) **ONE POUND** (Die #) **XG-494**, **TWO POUNDS** (Die #) **XG-491** (light corner wrinkle), and **THREE POUNDS** (Die #) **XG-492**, all DIE SUNK on india (214x80-82mm) on card (229x152-154mm) issued by Canadian Bank Note Co., scarce and very fine. Est. 300+.....

CANADA PROVINCES



UCS Cat Val

278 DP **VANCOUVER ISLAND: 4: TEN CENT: LARGE DIE PROOF** typographed in BLACK on thick white surfaced card (93x60mm), "Mar, 10, 1865" date stamp at top left, ms "7189" and initialed by pen, light edge soiling, still very fine. **VERY RARE**. (Only one other Die Proof dated March 10, 1865 has been reported, numbered "7190"). Est. 2500+.....

NEW BRUNSWICK PROOFS



279



283



280



284



285



281



282

UCS Cat Val

279	P	1P-3P: PENCE ISSUES: 3d, 6d and 1/- REPRINT PROOFS, very fine.....	400
280	P	3P: PENCE ISSUES: 1/- REPRINT PROOF, bottom margin BLOCK OF FOUR with ink smear, very fine. Est. 150+.....
281	P	5P: 5¢ CONNELL PLATE PROOF BROWN, on india on card, left margin BLOCK OF FOUR, very fine.....	1200
282	P	5Pii: PLATE PROOF, LIGHT BROWN, on thick bond, left margin BLOCK OF FOUR, very fine.....	2400
283	P	5Pvi: PLATE PROOF, BROWN, on india on card, with CARMINE SPECIMEN (Type D), very fine.....	600
284	P	7: 2¢ GOODALL DIE PROOF, BLUISH-GREEN, engraved on soft white wove paper (25x30mm) sunk on card (45x47mm), showing light AMERICAN BANK NOTE. CO imprint and (Die #) 219, extremely fine. RARE. (Minuse & Pratt 7TC2g). Ex. Sir Gawaine Baillie. Est. 1500+.....
285	P	11: 17¢ GOODALL DIE PROOF, BLUISH-GREEN engraved on soft white wove paper (26x31mm) sunk on card (41x57mm), with extremely light, mostly missing embossed AMERICAN BANK NOTE. CO imprint extremely fine. RARE. (Minuse & Pratt 11TC2g). Est. 1500+.....

NOVA SCOTIA PROOFS



UCS Cat Val

286 P 1/6P: **REPRINT PROOFS** on thin hard paper of 1d in brown, 3d in blue, 6d in dark green and 1/- in violet black, very fine 500



UCS Cat Val

287 P 8P,8Piii,8TCi-iii,8TCv,8TCx,8TCxi: **ONE CENT**: Eight different **PLATE PROOFS** on india, two on card, BLACK, BLACK with Overprint C, VERMILION with Overprint A, B, and C, DARK VIOLET and ORANGE with partial imprint at right, vermilion with thick sans serif overprint stained otherwise very fine..... 670



UCS Cat Val

288 P 9P,9TCi-9TCiii: **TWO CENT**: Four different **PLATE PROOFS**, LILAC, ORANGE, DARK SLATE VIOLET, and DARK SLATE VIOLET with overprint, on india, very fine..... 330



UCS Cat Val

289 P 9TCi: **TWO CENT: PLATE PROOF**, ORANGE on india, bottom margin **American Bank Note Co. New-York.** imprint PAIR, very fine.. 180



290



291

UCS Cat Val

290 P 10P,10Pi,10TCii,10TCiii: **FIVE CENT: Four different PLATE PROOFS**, BLUE, BLUE with overprint, BLACK with Overprint A (light staining at top) and C, on india, appears very fine..... 325

291 P 10P: **FIVE CENT: PLATE BLOCK**, BLUE, on india, right margin **American Bank Note Co. Yew-York.** imprint BLOCK OF FOUR, very fine..... 240



UCS Cat Val

292 P 11P,11Pi,11TCi,11TCii,11TCvii: **EIGHT-AND-A-HALF CENT: Five different PLATE PROOFS** GREEN, DARK GREEN, BLACK with Overprint B and C, and ORANGE, on india, very fine..... 425



293



294

UCS Cat Val

- 293 P 12P,12TC,12TCiii,12TCxi-12TCxiii: **TEN CENT**: Seven different **PLATE PROOFS**, VERMILION, BLACK, BLACK with Overprint C, GREEN, BLUE, and ORANGE, on india, very fine..... 630
- 294 P 12TC: **TEN CENT**: **PLATE PROOF**, BLACK, BLOCK OF FOUR, on india, very fine..... 400



UCS Cat Val

- 295 P 13P,13Pii,13TCv,13TCvi,13TCix: **TWELVE-AND-A-HALF CENT**: Five different **PLATE PROOFS**, BLACK, BLACK with Overprint B, GREEN, GREEN with Overprint C, and ORANGE, on india, very fine..... 390



296



297

UCS Cat Val

- 296 P **PRINCE EDWARD ISLAND**: British American Bank Note Co, Ottawa Canada, engraved **PLATE ESSAY** of a THREE CENT in GREEN, showing Queen Victoria in her Widow Weeds, perf 13, og, hr, a bit of stacking offset on reverse, still very fine and seldom seen. (Minuse & Pratt 13E-Ab). Est. 150+.....

NEWFOUNDLAND PROOFS

- 297 P 1: **ONE PENCE**: BLACK, on thin card, fine..... 400



UCS Cat Val

298 P 24P-31P: 2¢ to 24¢ CENTS ISSUE complete **PLATE PROOFS** on india in colour of issue, 10¢ showing partial imprint at bottom with light wrinkles, small mark on 12¢ red brown on card (28Pi), otherwise fresh and very fine..... 580



UCS Cat Val

299 P 27P: 10¢ **PLATE PROOF**, BLACK on india, right margin **BLOCK OF FOUR** showing full, **American Bank Note Co. New-York.** imprint, light wrinkles, appears very fine..... 300



UCS Cat Val

300 TC 32P/32TCix: **ONE CENT**: Edward, Prince of Wales, nine different **PLATE PROOFS**, on india in DULL VIOLET, DARK RED BROWN, CARMINE, RED, CHESNUT BROWN, YELLOW ORANGE, BLUE GREEN, BLUE, and BLACK, mostly very fine..... 930



301



302



303

UCS Cat Val

301	P	32P: THREE CENT: PLATE PROOF , VERMILION on india on card, BLOCK OF FOUR, very fine.....	360
302	P	32Ciii: ONE CENT: PLATE PROOF , PURPLE RED on india, BLOCK OF FOUR, LL stamp with small hole, rest very fine.....	400
303	P	32Civ: ONE CENT: PLATE PROOF , CHESNUT BROWN on india on card, BLOCK OF FOUR, very fine.....	400
304	P	32Cvi: ONE CENT: PLATE PROOF , YELLOW ORANGE on india on card, BLOCK OF FOUR, very fine.....	400
305	P	32Cvi: ONE CENT: PLATE PROOF , YELLOW ORANGE on india on card, BLOCK OF FOUR, very fine.....	400
306	P	32Cvii: ONE CENT: PLATE PROOF , GREEN on india on card, BLOCK OF FOUR, very fine.....	400



304



305



306



307



308



309

UCS Cat Val

307	TC	32TCix: ONE CENT: PLATE PROOF , BLACK, PAIR on india, on card, very fine.....	300
308	TC	32TCxiv: ONE CENT: PLATE PROOF , DEEP BLUE on thin wove paper, perf 12, og, fine.....	250
309	TC	32TCxiv: ONE CENT: PLATE PROOF , DEEP BLUE on thin wove paper, perf 12, og, small gum thin, still fine.....	250



310



312

UCS Cat Val

310	P	32APi: ONE CENT: PLATE PROOF , VIOLET BROWN on card, BLOCK OF FOUR, very fine.....	320
311	P	35Pi,35TC,35TCi,35TCii: SIX CENT: PLATE PROOFS , BRIGHT ROSE, DEEP ORANGE, DUSTY OLIVE BROWN, and GREEN on india, very fine.....	370
312	P	35Pi: SIX CENT: PLATE PROOF , BRIGHT ROSE on india on card, BLOCK OF FOUR, very fine.....	280



311



UCS Cat Val

- 313 P 61P-74P: 1897 CABOT ISSUE, 1¢ to 60¢ complete in **PLATE PROOFS**, on india on card, very fine..... 775
- 314 S 61s-74s: 1897 CABOT ISSUE, 1¢ to 60¢ complete, all with diagonal red **SPECIMEN** overprints, 4¢ and 6¢ with light bend, 30¢ partial heavy gumming, otherwise nh, f-vf..... 1500





315



318

UCS Cat Val

- 315 P 78P-86P: 1897-1901 ROYAL FAMILY, 1/2¢ to 5¢ complete **PLATE PROOFS**, on india on card, 2¢ just into otherwise f-vf..... 450
- 316 S 78s-85s,86s: 1897-1901 Royal Family and 1908 Map issue, the complete set of 47 all with various **SPECIMEN** overprints in red or blue plus security punch, nh, mostly very fine. Est. 1500+.....Photo Online 1500
- 317 P 86Pi: **TWO CENT: PLATE PROOF**, BROWN CARMINE on india on card, PAIR, very fine..... 400
- 318 P 86Pi: **TWO CENT: PLATE PROOF**, BROWN CARMINE on india on card, BLOCK OF FOUR, very fine..... 800
- 319 TC 96TC: 12¢ Edward VII perforated **TRIAL COLOUR PROOF**, GREEN on gummed paper, nh, very fine. (NSSC 88dp16 \$200)..... ..



317



319



321



320

UCS Cat Val

- 320 TC 96TC: 12¢ Edward VII Lithographed **IMPERFORATE TRIAL COLOUR PROOFS**, four different colours on gummed paper, nh, very fine. (NSSC 88c \$400)..... ..
- 321 P 192P: 6¢ Princess Elizabeth **DEFACED PLATE PROOF**, GREY BLACK on wove, very fine. Est. 150+..... ..



UCS Cat Val

322 P 233P,235P-243P: 1937 LONG CORONATION: 1¢ to 48¢, no 3¢, very fine. Est. 750+.....



323



324

UCS Cat Val

323 P 237aP: **THREE CENT: PLATE PROOF**, ORANGE BROWN, UL corner margin on thick paper showing **LATHEWORK** at left, some ink offset in selvedge, selvedge creased, still very fine. RARE. Est. 500+.....

324 P 237aP: **THREE CENT: PLATE PROOF**, DARK ORANGE BROWN, UL corner margin on thick paper showing **LATHEWORK** at left, very fine. RARE. Est. 500+.....

325 P 237aP: **THREE CENT: PLATE PROOF**, ORANGE BROWN, LL corner margin on thick paper showing **LATHEWORK** at left, very fine. RARE. Est. 500+.....



325



UCS Cat Val

326 P 234P/243P: 1937 LONG CORONATION 3¢ to 48¢ IMPERFORATE BLACK PROOFS, on thick unwatermarked paper, no gum as issued, very fine. (Walsh \$600).....



UCS Cat Val

327 P AIRMAILS: C6P-8P: 15¢ to \$1 IMPERFORATE BLACK PROOFS, on thick unwatermarked paper, no gum as issued, very fine. (Walsh AM7o, AM8I, AM9I - \$1040).....



328



329



330

UCS Cat Val

328 P 212P: 1¢ Gilbert LARGE DIE PROOF in colour of issue on wove paper (60x82mm) with DIE SINKAGE (57x79mm) and layout guidelines and (reversed albino die no) 1096 UR, scarce. Est. 350+.....

329 P 212P: 1¢ Gilbert LARGE DIE PROOF in colour of issue on wove paper (41x42mm) and layout guidelines, very fine. Est. 200+.....

330 P OFFICIALLY SEALED: OX1ii: 1905 PLATE PROOF, BLACK on india, extremely fine..... 1000

END OF FIRST SESSION (PART I)